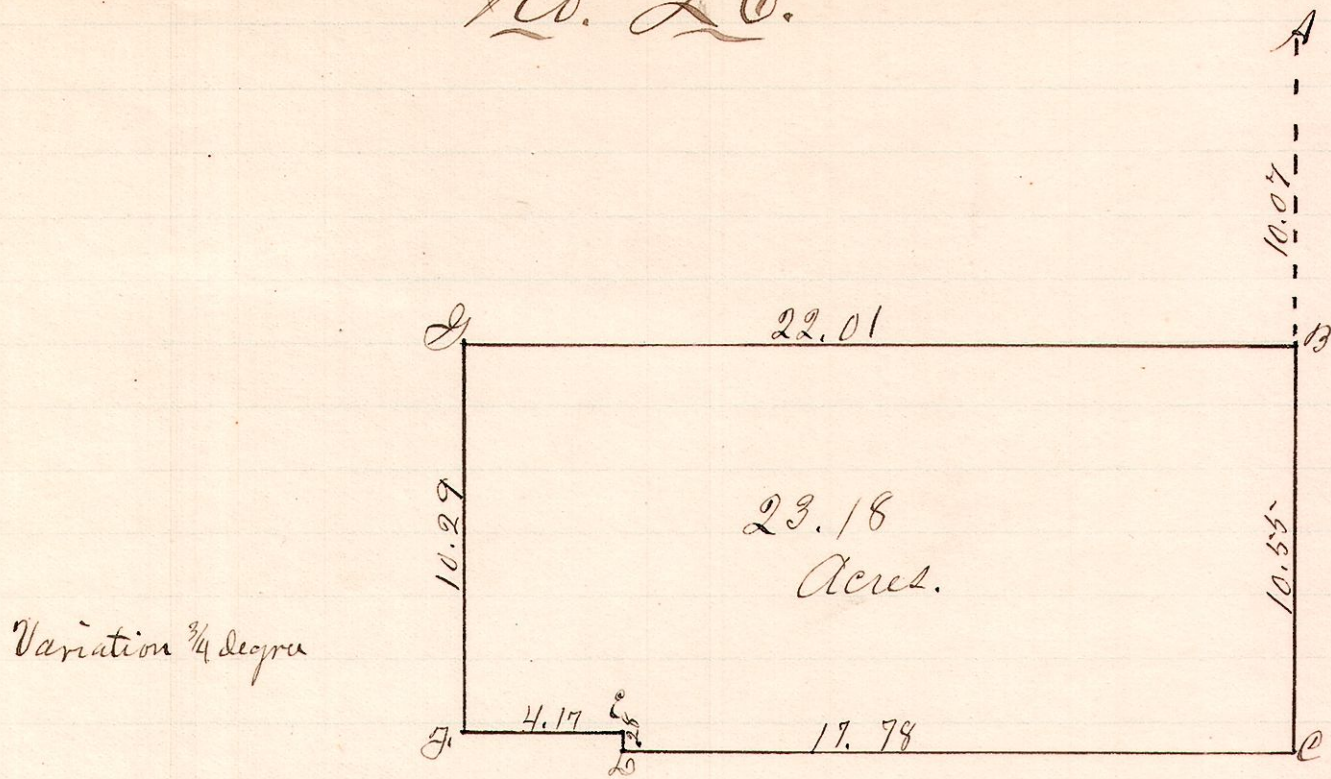


No. 26.

R T S 22  
13 14 32 SW



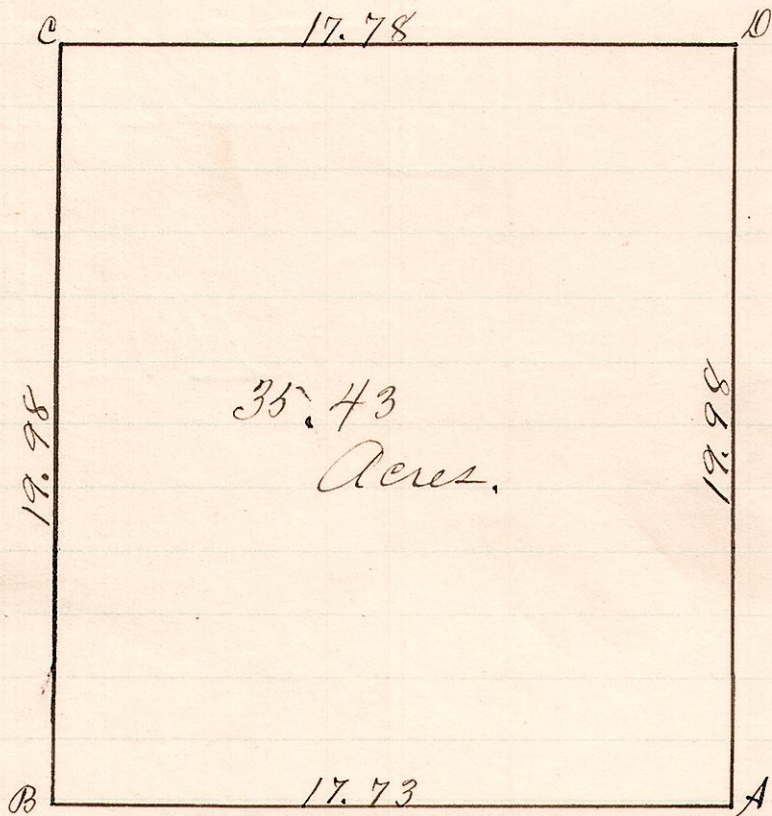
A is a stone at the center of Sec 32. B is 10.07 chains south of A.

A correct plat of a survey made for J.C. Gillam, Nov. 1884, 1886

W. S. Hanna,  
County Surveyor.

No. 27.

R T S 28  
13 14 32 SW



A is the south east corner of the above described 2nd Sec. The bearing tree north west of the corner was found

The above is a correct plat of a survey made for James H. Lecky.

Nov. 19, 1886

W. S. Hanna,  
County Surveyor