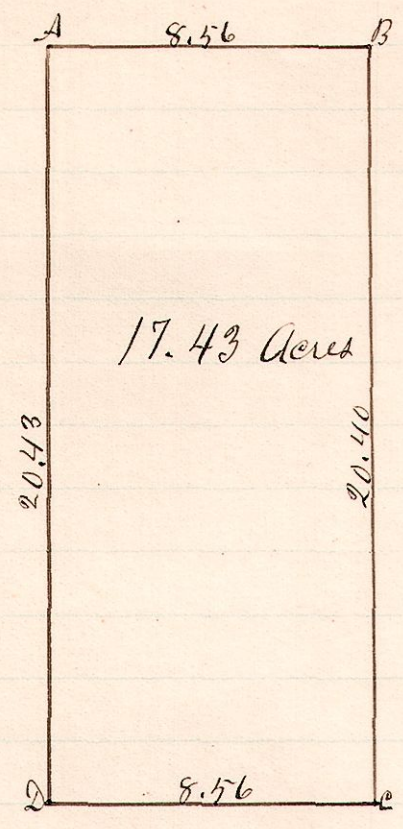


No. 23.

R 7 S 2r
13 14 32 SW



A is a stone at the north west corner of the south west quarter of Sec 32.

Stones set at B, C, & D.

A survey made for Sarah Lecky setting off a part of the south west 2r of Sec. 32, Twp. 14, Range 13.

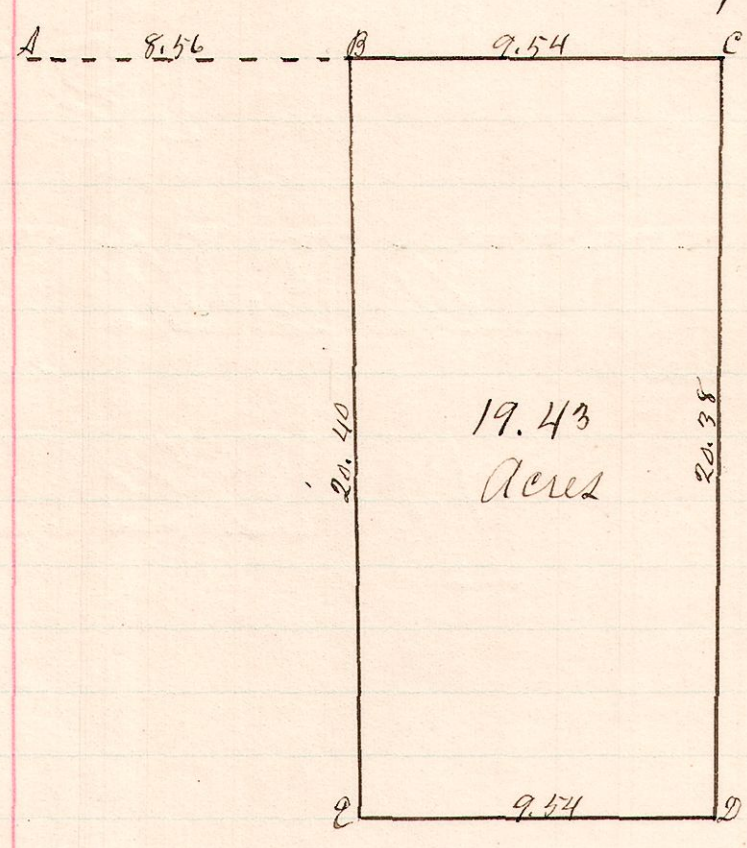
Variation $\frac{1}{4}$ deg.

Nov. 18, 1886.

W. S. Hanna,
County Surveyor.

No. 24.

R 7 S 2r
13 14 32 SW



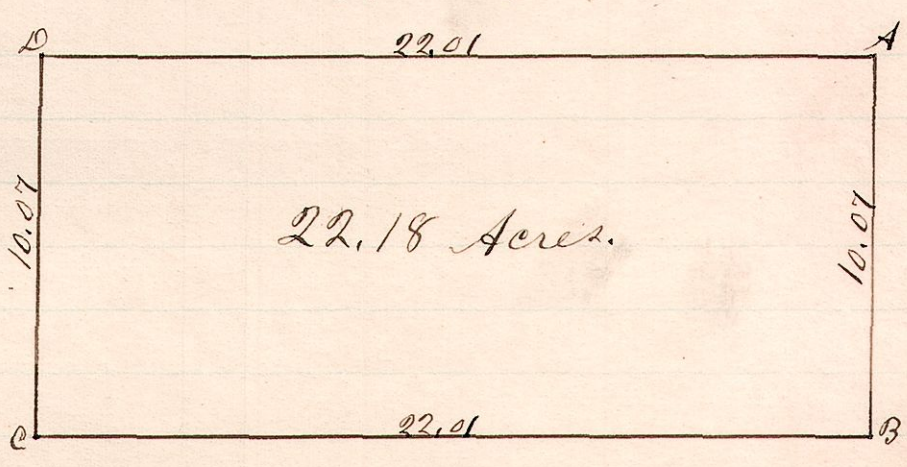
A is a stone at the north west corner of the south west qtr. of Sec. 32. One bearing tree standing at this corner, the stump of the oak still there.

This is a correct plat of a survey made for Arthur J. Lecky, Nov. 18, 1886.

W. S. Hanna,
County Surveyor.

No. 25.

R 7 S 2r
13 14 32 SW



A is a stone at the center of Sec. 32.

The above is a correct plat of a survey made for Ora A. Dodge
Nov. 18, 1886.

W. S. Hanna,
County Surveyor.