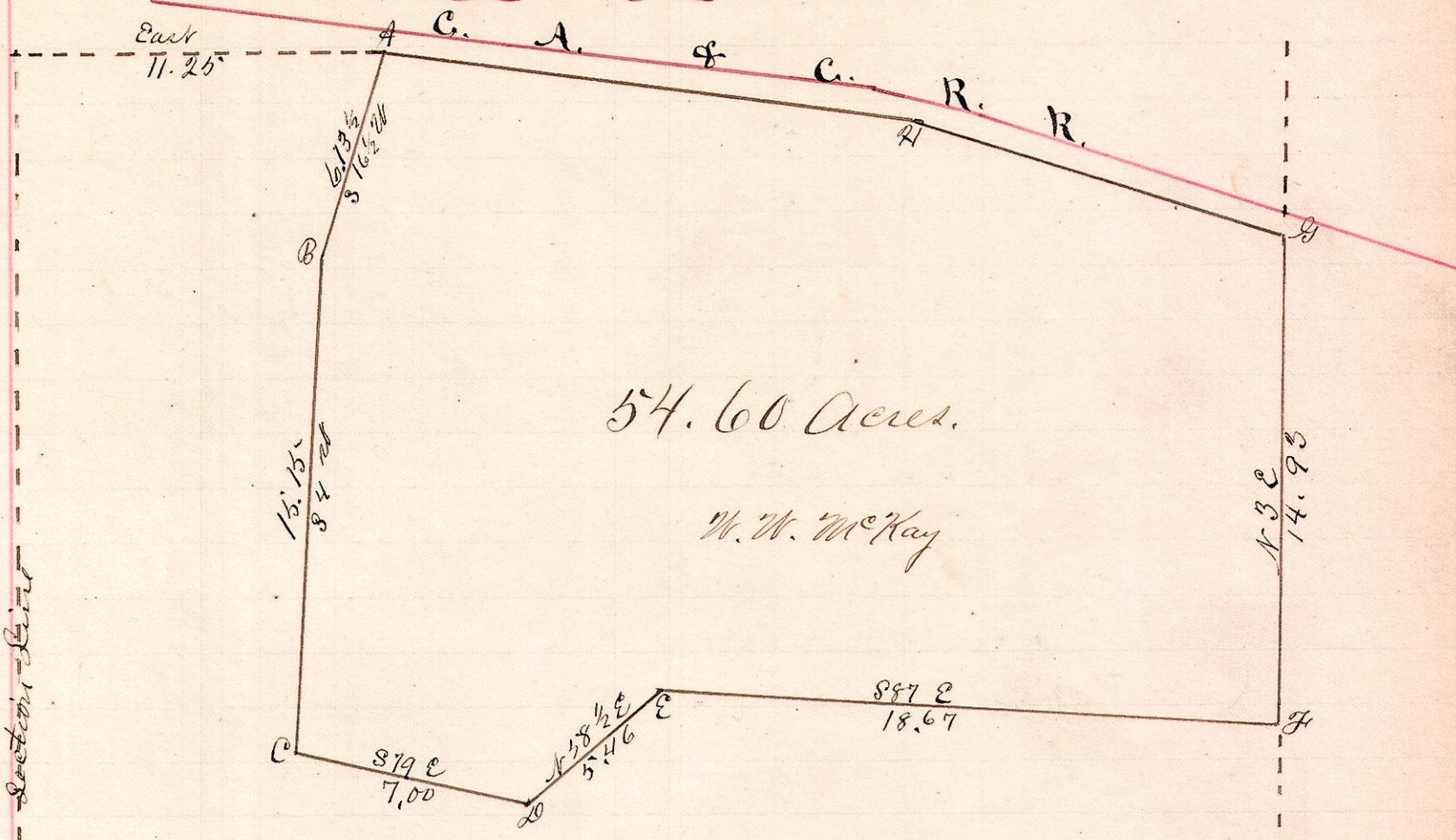


No. 22.

R 1 Sec 2r  
8 8 8 NW



A, the place of beginning is 11.25 chains east of the west line of said section and on the south line of the Cleveland Akron & Columbus Railway.  
 C is a Black Oak 15 in. in diameter - corner tree.  
 G is on the quarter section line on the south line of C.A. & C. Rwy.

Stations.	Bearings	Distances	Latitudes		Departures		Corrected Latitude	Corrected Departure	D. M. G.	North Area.	South Area.
			N.	S.	E.	W.					
A	S 16 1/2 W	6.13 1/2		5.875		1.736	- 5.873	- 1.747	3.887		22.828
B	S 4 W	15.15		15.109		1.060	- 15.105	- 1.070	1.070		16.162
C	S 79 E	7.00		1.340	6.870		- 1.339	+ 6.850	6.850		9.172
D	N 58 1/2 E	5.46	2.830			4.652	+ 2.831	+ 4.632	18.932	52.264	
E	S 87 E	18.67		.975	18.649		- .974	+ 18.612	41.576		40.495
F	N 3 E	14.93	14.908			.778	+ 14.912	+ .778	60.966	908.724	
G	N 73 1/2 W	12.61	3.583			12.095	+ 3.586	- 12.120	49.618	177.930	
N	N 83 W	15.93	1.943			15.903	+ 1.944	- 15.932	21.566	41.924	
			23.254	23.300	30.950	30.795				1180.842	88.657
			Error	.016	Error	.155					

1180.842 - 88.657 = 1092.185; 1092.185 ÷ 2 = 546.09;  
 546.09 ÷ 10 = 54.60 acres.

The above plat and record is a correct representation of a survey made at the request of Frances Stuebing to strike off a part of the north west quarter of sec. 8 Twp. 8, Range 8, and determine the area of the same

Nov. 13, 1886.

W. S. Hanna  
 County Surveyor.