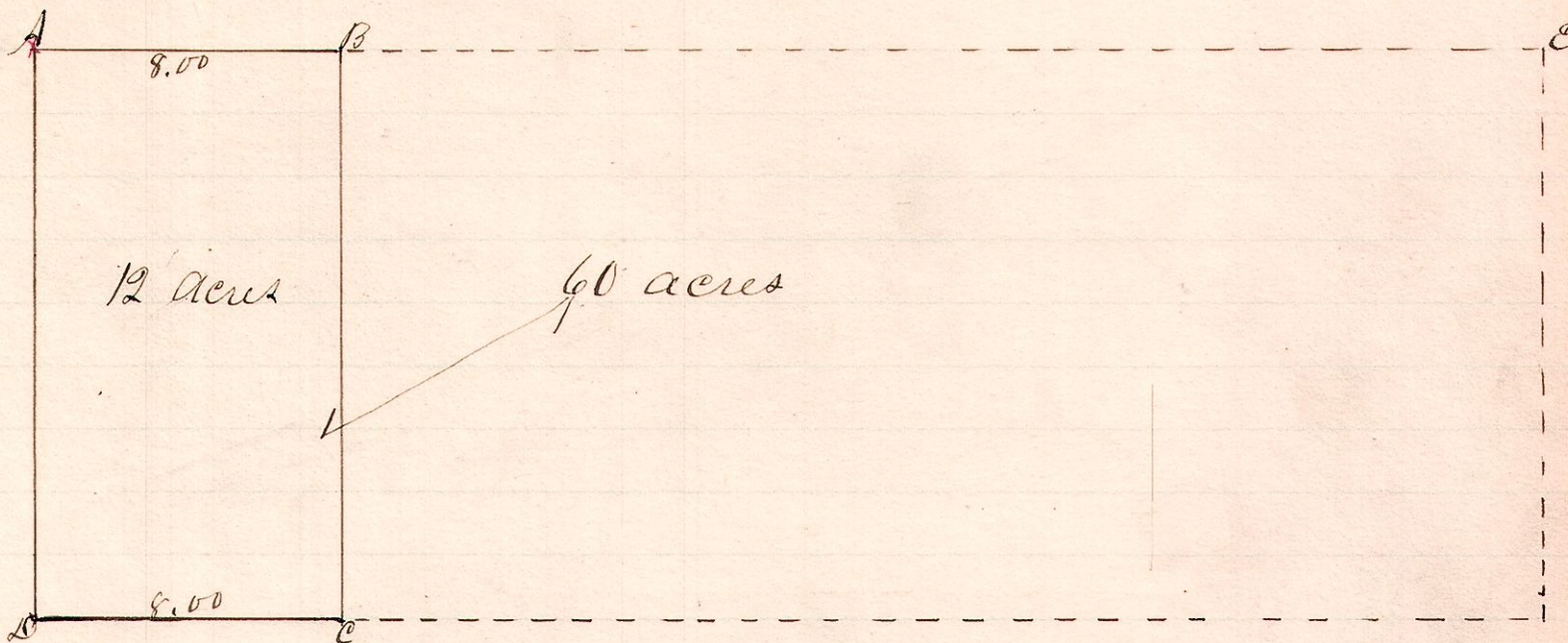


No 18

R & Sec 2 & 3  
13 13 5 N.W.



A, stone at north west corner of section,  
D, stone Bearing tree found at e.  
Partition made by order of Court of Common Pleas —  
William Ditmar, Jacob Schlupe & W. S. Hanna Commissioners  
12 acres set off for R.C. Cissue and the remaining 48 acres  
appraised.

The above is a correct plat of said survey.

Oct. 4, 1886.

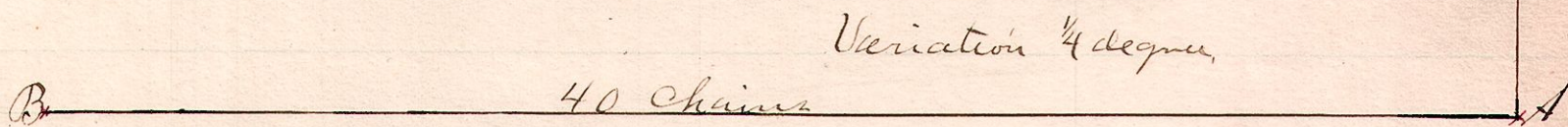
W. S. Hanna  
County Surveyor

No. 19.

R. T. Sec. 2, 3, 4  
15 20 25 S.W.



B is a stone where sections 25, 26 & 35, 36 corner  
and is near the center of road and below the surface  
A is a stone at quarter section corners on  
south line of section 25.  
C. is a point near shore of lake



The above is a correct plat of a survey made at  
the request of the Curtis heirs to determine the corners and  
boundaries as above described.

Nov. 3, 1886.

W. S. Hanna  
County Surveyor