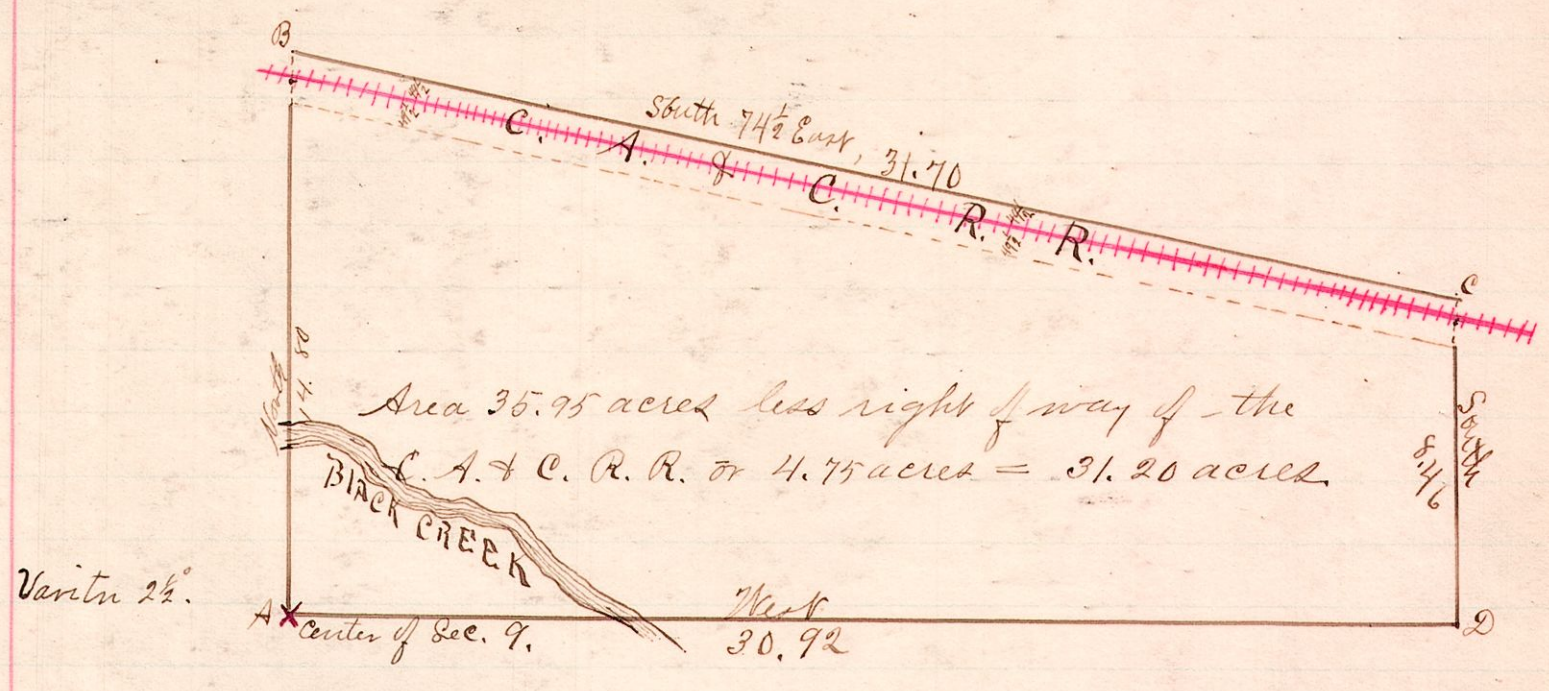


No. 12.

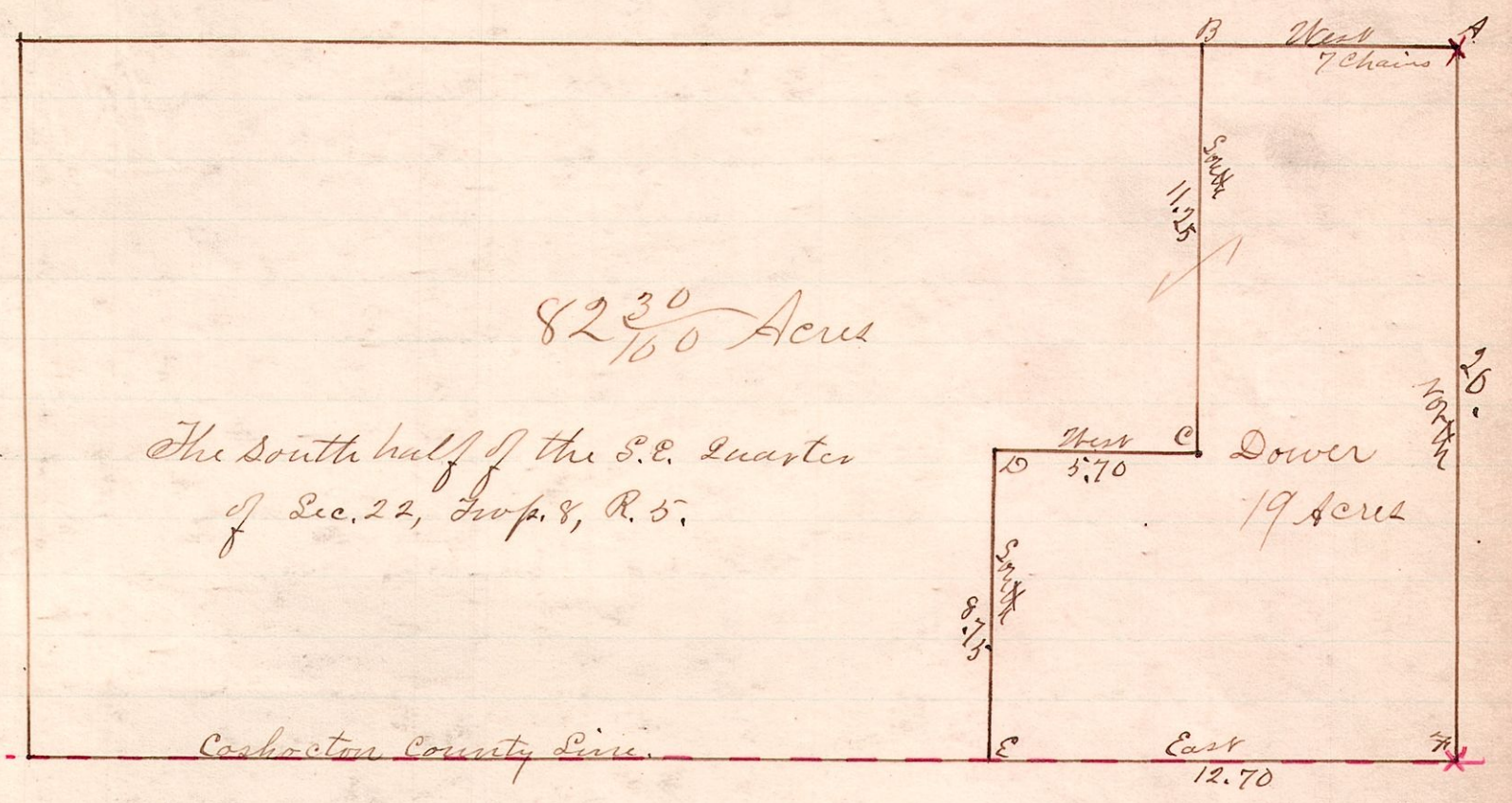
R. 7 Sec  
8 8 9



The above is a correct plat of the land surveyed for Daniel L. Garner July 12, 1886.  
 W. J. Hanna  
 County Surveyor

No. 13.

R. 7 Sec  
5 8 22



A is a stone.  
 F is a stone.

Joseph S. Miller  
 Henry S. Row } Commissioners  
 W. J. Hanna

A survey made by order of the Court of Common Pleas to set off dower for Sarah Snyder widow of Snyder in the case of Peter J. Snyder against Jacob Snyder et al.  
 The above is a correct plat of said survey

August 4, 1886.

W. J. Hanna  
 County Surveyor