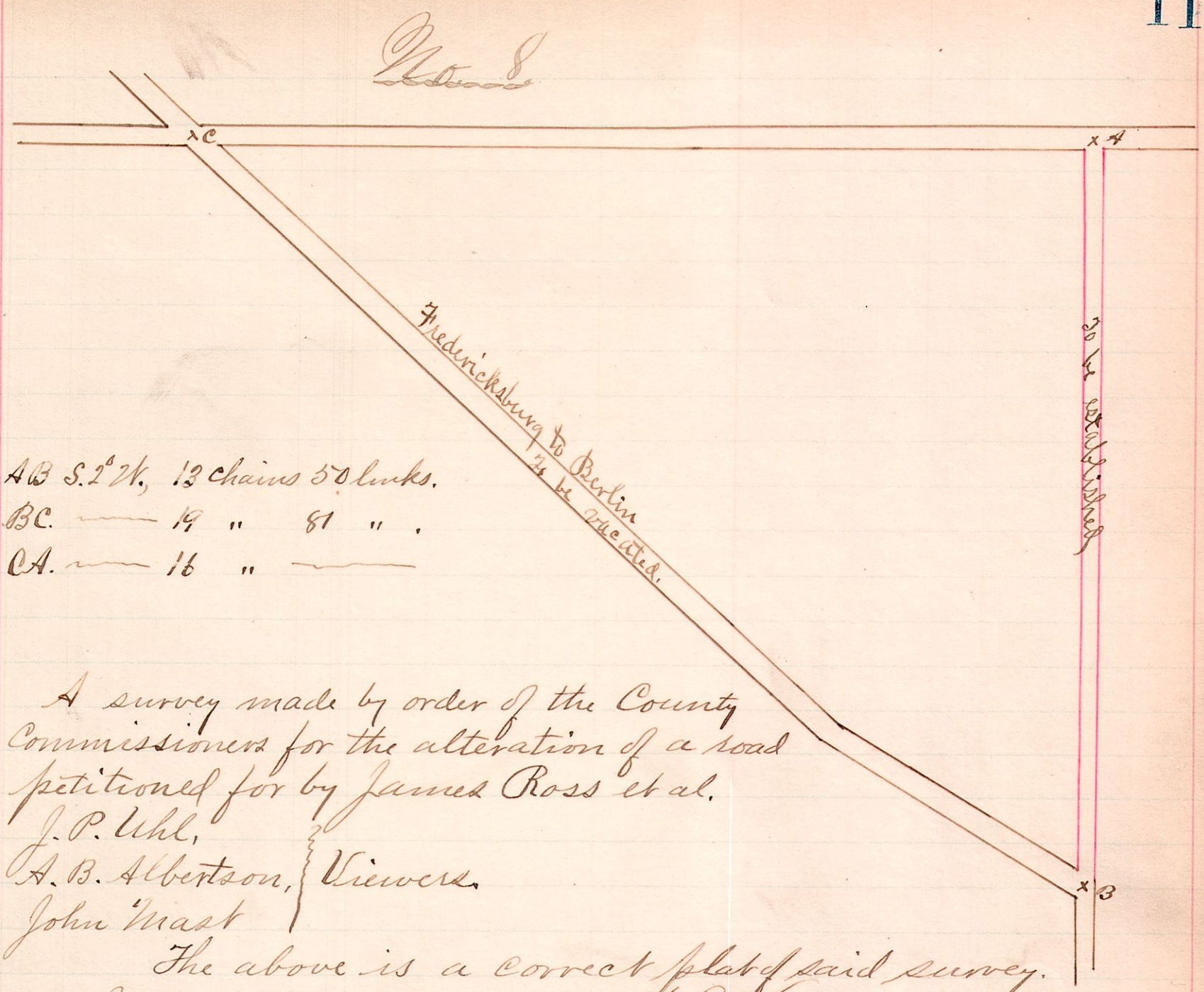


R. T. Sec
12 15 32



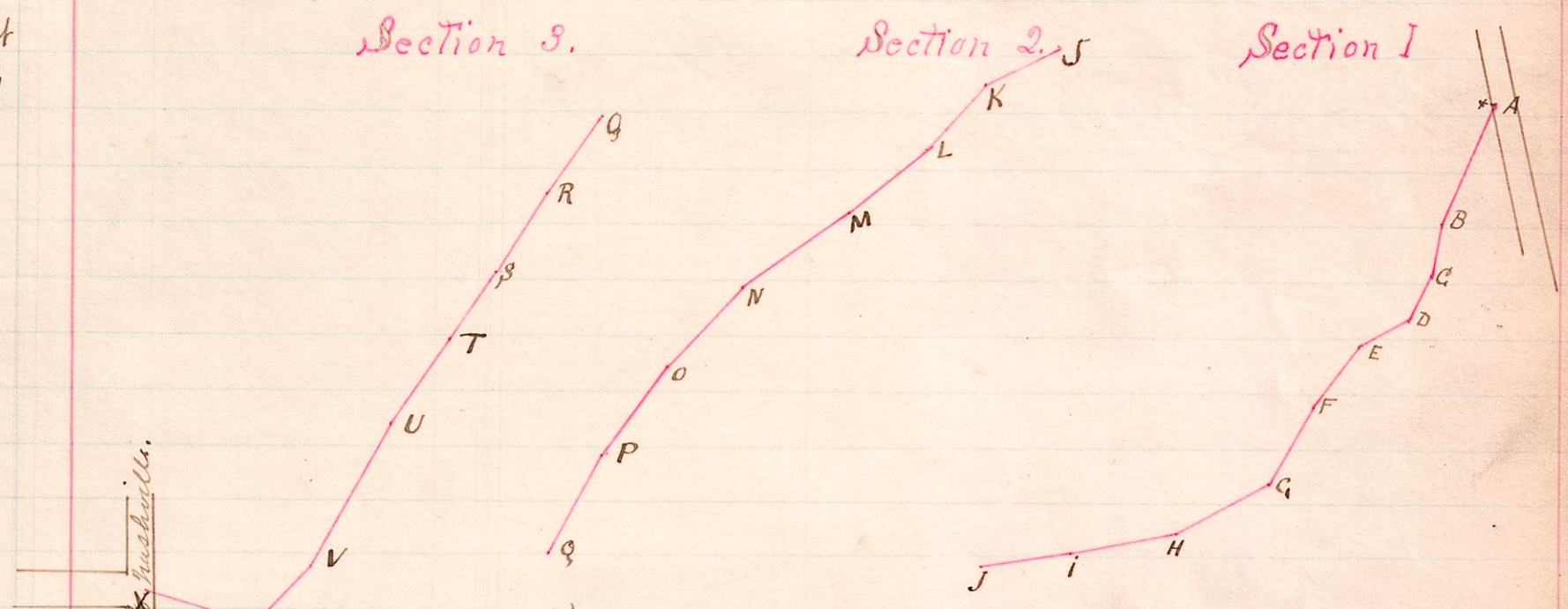
AB S. 2 1/4, 13 chains 50 links.
BC. ——— 19 " 81 " .
CA. ——— 16 " ———

A survey made by order of the County Commissioners for the alteration of a road petitioned for by James Ross et al.
J. P. Uhl,
A. B. Albertson, } Viewers
John Mast

The above is a correct plat of said survey.
June 17, 1886.
W. J. Hanna
County Surveyor

No. 9.

R. 7. 2nd Lot
8 9 3rd 31



A is N 81° E, 25 links from a chestnut standing near the road side.

X is near the west side of the road leading from Blackcreek to Nashville.

A	S 22 1/2 W	3.35	W	S 52 1/2 W	3.86
B	S 11 W	1.73	W	S 42 1/2 W	3.19
C	S 24 W	1.50	O	S 38 W	3.32
D	S 60 W	1.65	P	S 28 W	3.07
E	S 35 1/2 W	2.11	2	S 35 W	2.65
F	S 30 W	2.70	R	S 32 W	2.78
G	S 62 W	3.09	S	S 28 1/2 W	2.56
H	S 78 W	3.20	T	S 33 1/2 W	3.07
J	S 81 W	2.71	U	S 29 W	4.71
K	S 58 W	2.38	V	S 46 W	2.35
L	S 42 W	2.67	W	N 74 W	3.26
	S 50 W	2.88			

A survey made by order of the County Commissioners for the establishment of a road in Range 8 Township 9 and petitioned for by W. H. Hall et al.

Jacob Hart,
John Hendrick, } Viewers
Henry Johnson

The above is a correct plat of said road.

June 18, 1886

W. J. Hanna
County Surveyor