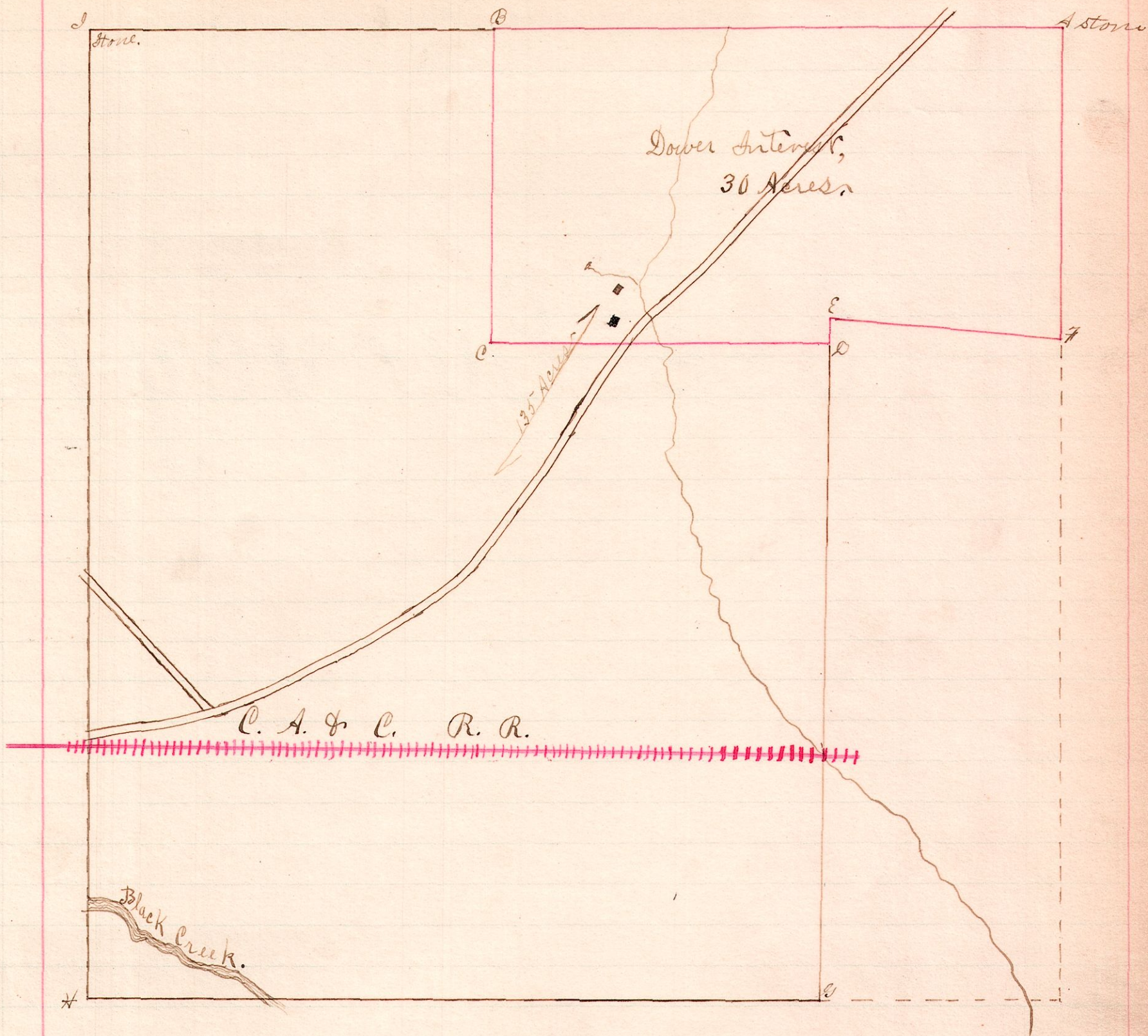


R. F. Sec 27

8 8 9 N.E.

No. 6.



A survey made by order of the Probate Court of Holmes county, Ohio to set off Dower in the above described land for Gemma Shafer, widow of William Shafer, deceased.

Appraisers { William Garver,  
John Jones,  
W. S. Hanna.

W. S. Hanna,  
County Surveyor  
May 27, 1886.