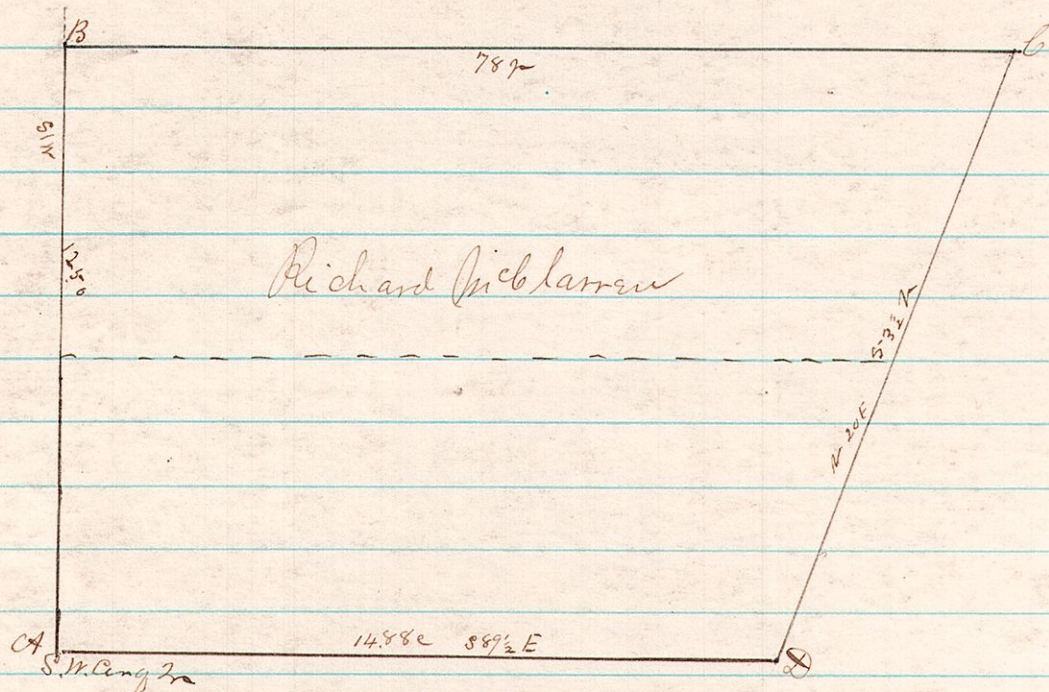


479 15-20 35 P1- S114

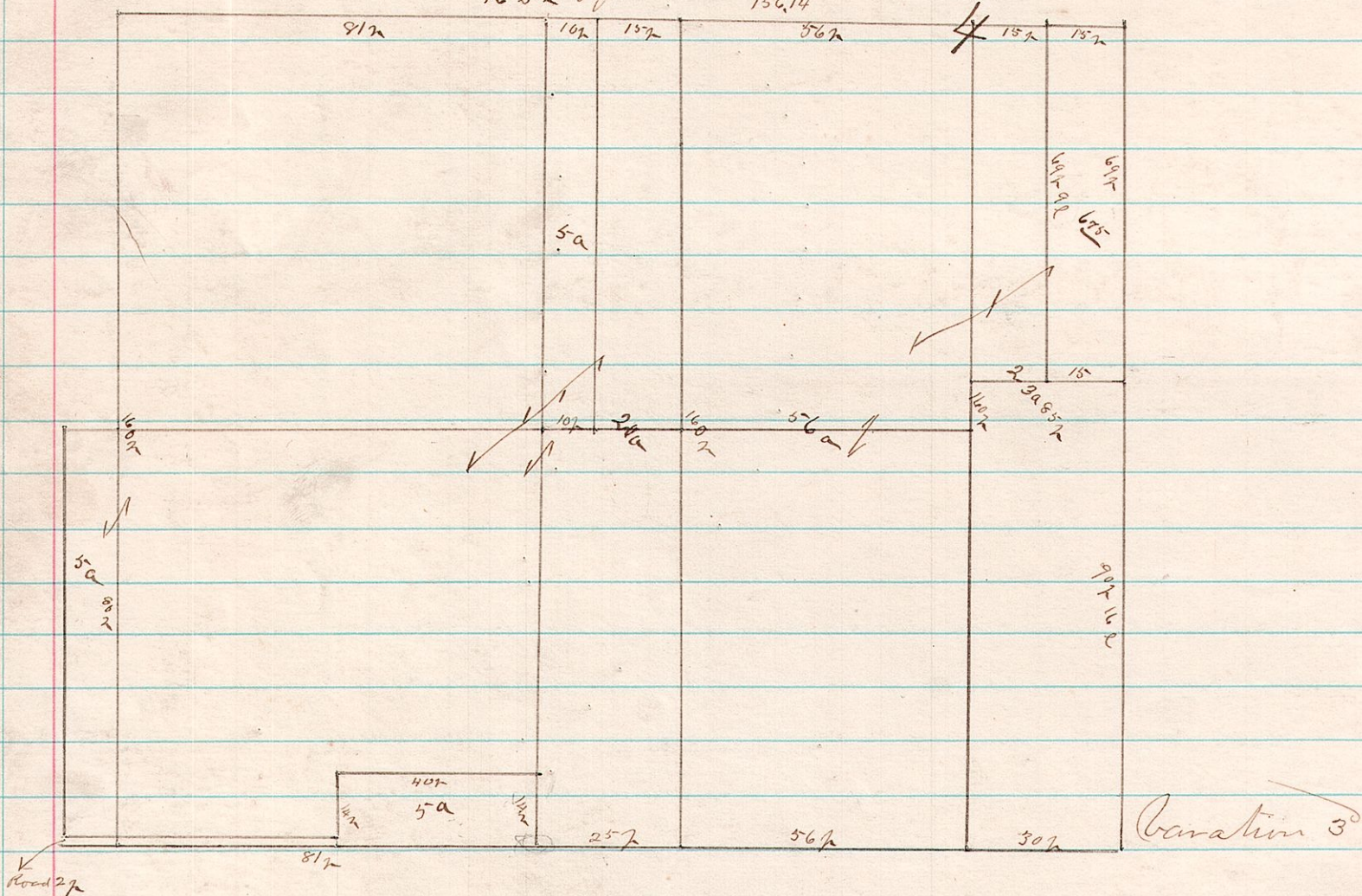


A Survey made for Richard McBlair of the S.W. P1- S114 Sec 35 T20 R15 to establish the corners A, B, C, & D commenced at N.W. Cor of Dr and run South 1/2 miles to a stone corner back and set corner at A & B from A run East 20 chains to post hereafter set by H.H. Robinson set stone corrected back and set corner D run line D-C & B-C as called for in deed and set corner at C

By mistake McBlair's deed calls the line A-B 52 rods when it is only 50 that being the amount of land only hereafter sold from this Dr Sec A Survey hereafter made Page 204 this volume was made from deed by but prior deeds show that his is wrong Surveyed September 11th 1885

James B. Ballou

9 8 4 P S2 + SE C 25 Home place of John B. Dewitt now deceased



A Survey made of Part of the South West Quarter of Section 4 T8 R9 + P1- S84 also SE C 25 on the 16th day of September A.D. 1885

James B. Ballou  
County Surveyor