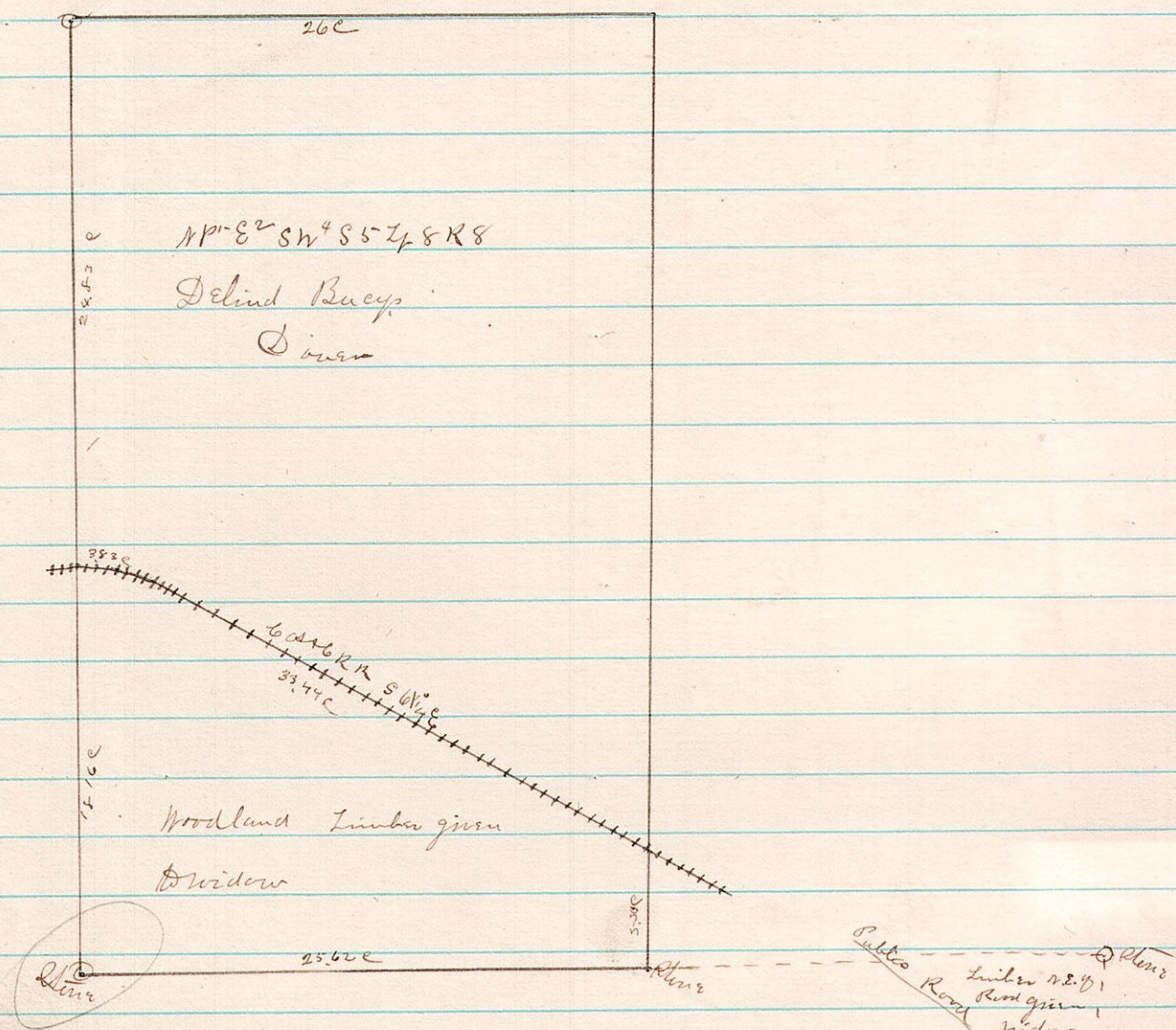


464

477

8 8 5 N 1/2 E 2 SW 4

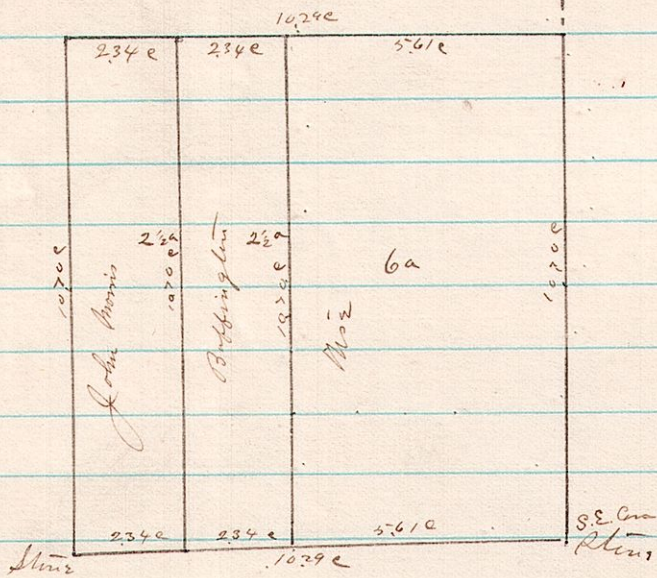


A Survey made to assign down to Delinda Buey widow of - Buey
 on the 9th day of September A.D. 1885

James C. Ballou
 County Surveyor

478

15 20 25 ^{SE} SW 4



A Survey made for John Morris Et al to determine lines
 above plotted and amount of acres therein contained on
 the 10th day of September A.D. 1885

James C. Ballou
 County Surveyor