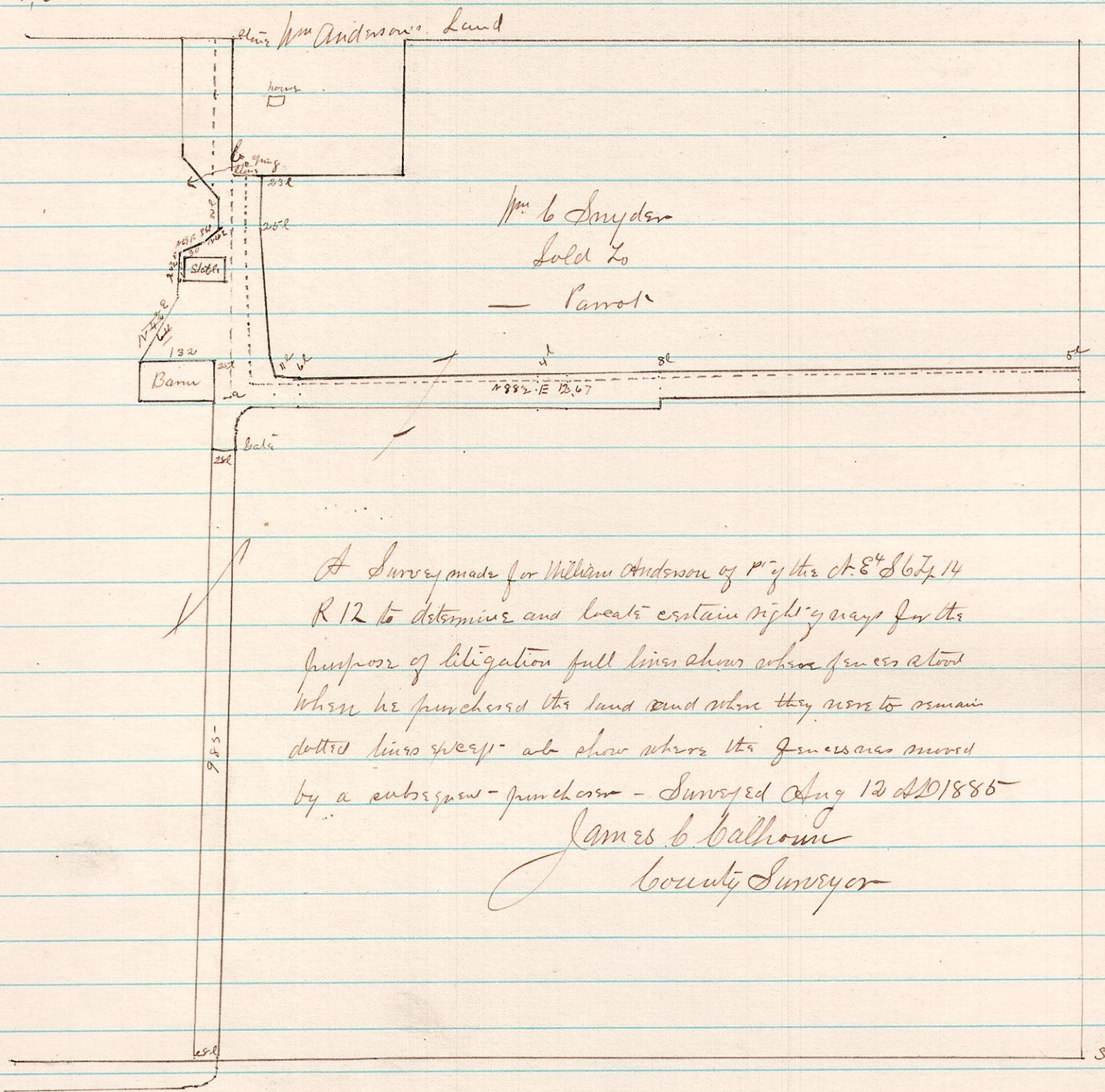


475

12 14 6 P<sup>1</sup> 1884

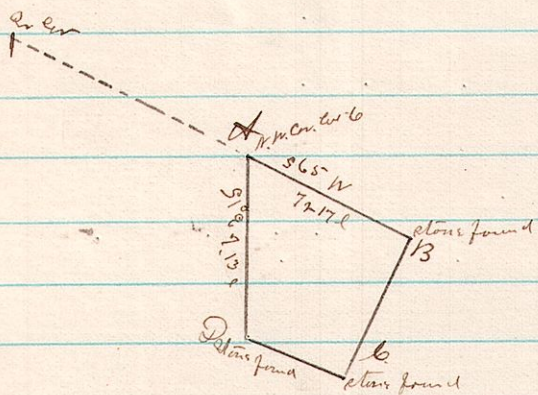


A Survey made for William Anderson of P<sup>1</sup> of the Ct. 8<sup>th</sup> S 6<sup>th</sup> T<sup>14</sup> R 12 to determine and locate certain rights of way for the purpose of litigation full lines show where fences stood when he purchased the land and where they were to remain dotted lines sweep - also show where the fences are moved by a subsequent purchaser - Surveyed Aug 12 AD 1885

James b. Calhoun  
County Surveyor

476

12 14 7 P<sup>1</sup> - N 71<sup>st</sup> S E<sup>4</sup> known as part of 6



A Survey made for Lewis Hill - to establish the corner & found corners at B & D on the lines DA + AB as called for in deed and established the corner A on the 25<sup>th</sup> day of August AD 1885

James b. Calhoun  
County Surveyor