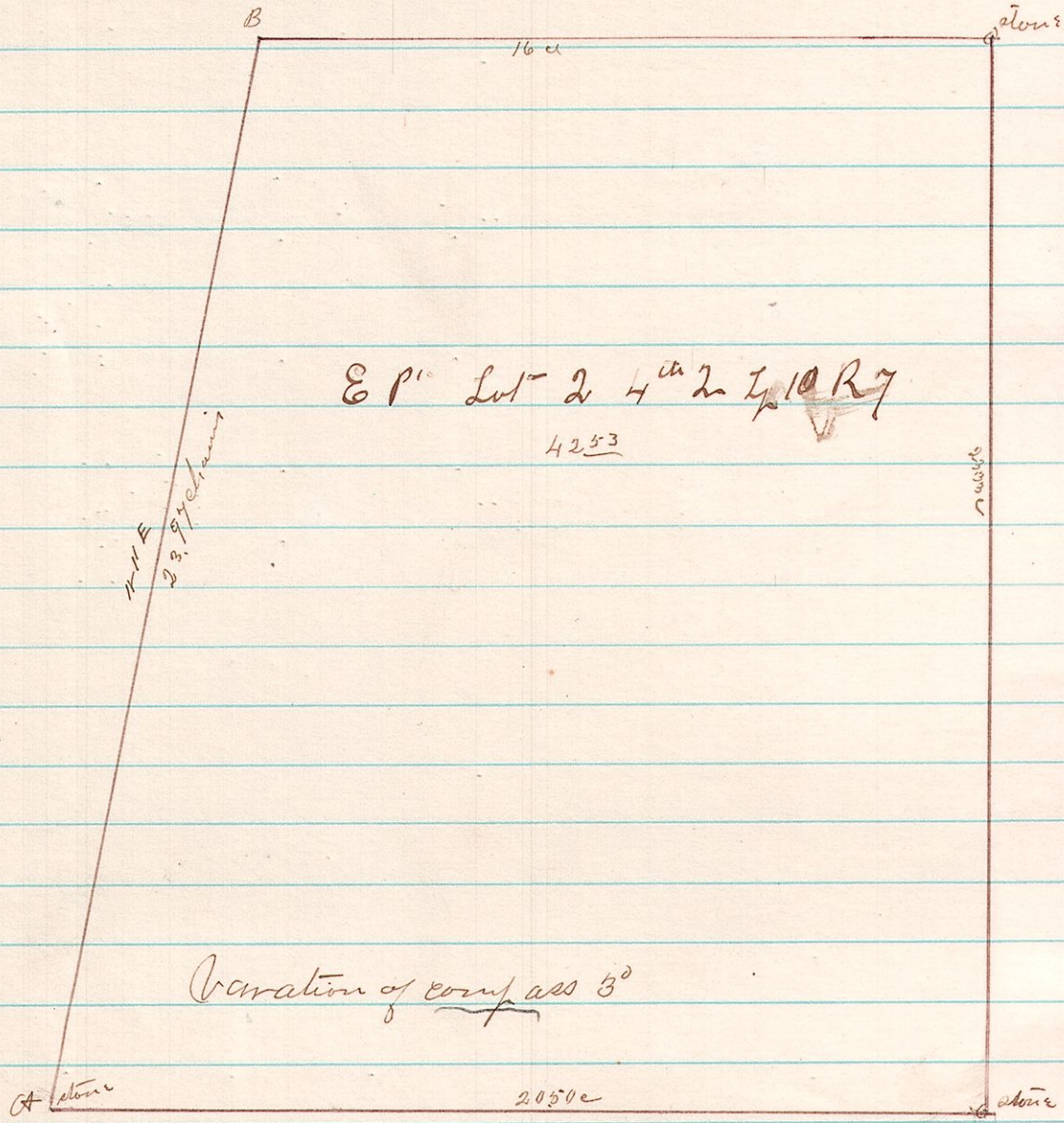


465

7 10 2nd E P¹-



A Survey made for William Collins on the 29th day of April 1885 for the purpose of establishing the line A.B. which was established
 James B. Calloun
 County Surveyor

466

7 8 6 P¹-SW⁴

The following are elevations of Levels taken at Hillbuck village from Bench Mark on front- corner step of the brick building located on original Lot - ch 1 Elevation of Bench 50 ft - commenced at this point from North Post - cor - 53.74
 Bench 53.78 Bench 54.30 Bench 51.88 Bench 47.56
 52.87 - 53.39 Bench 53.75 Post - cor - 53.75 - stone 53.68 Lincoln st - 52.49 Bench - 48.26

For numbers of lots and names of streets - see 293 this vol
 James B. Calloun
 County Surveyor