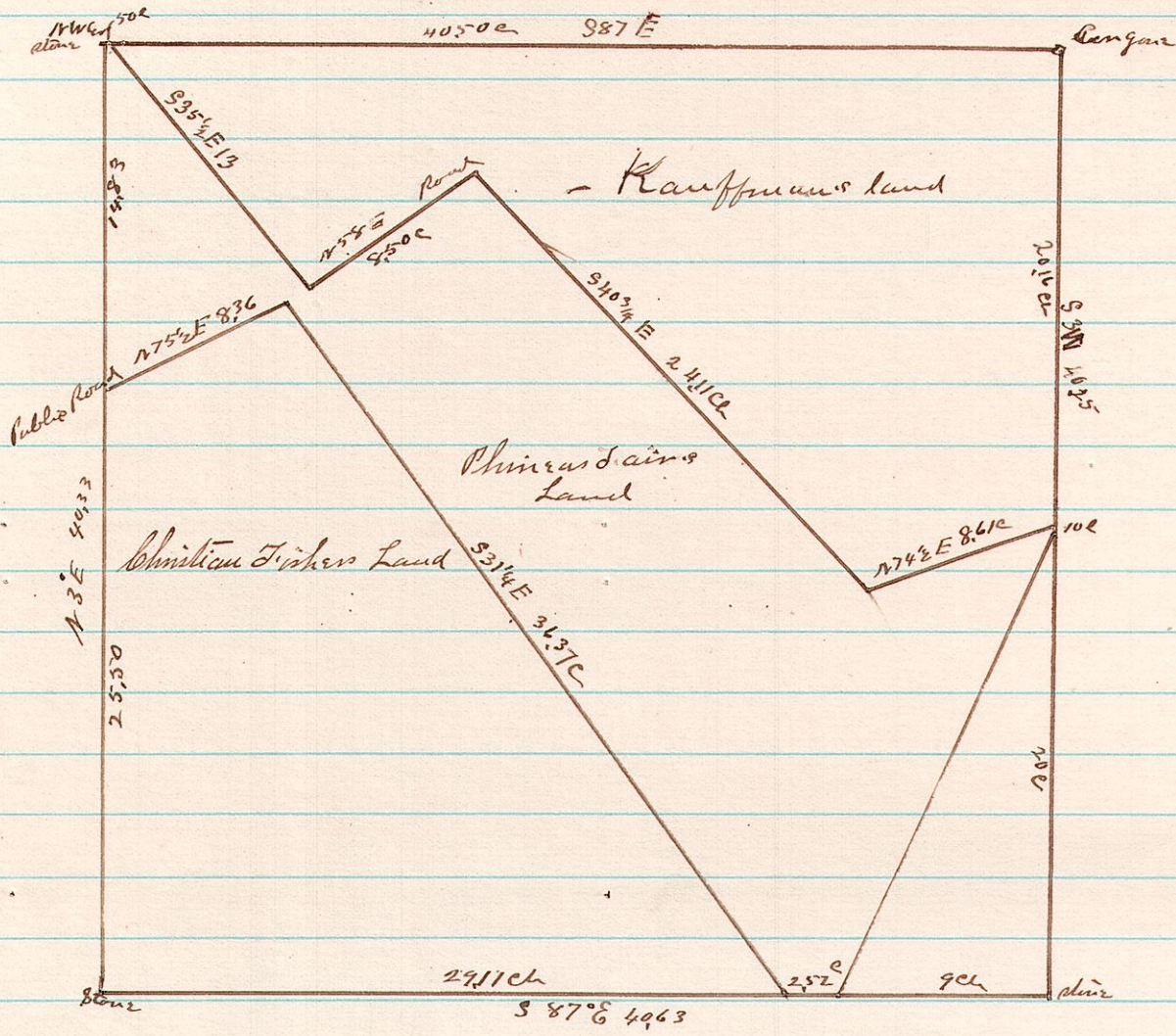


459

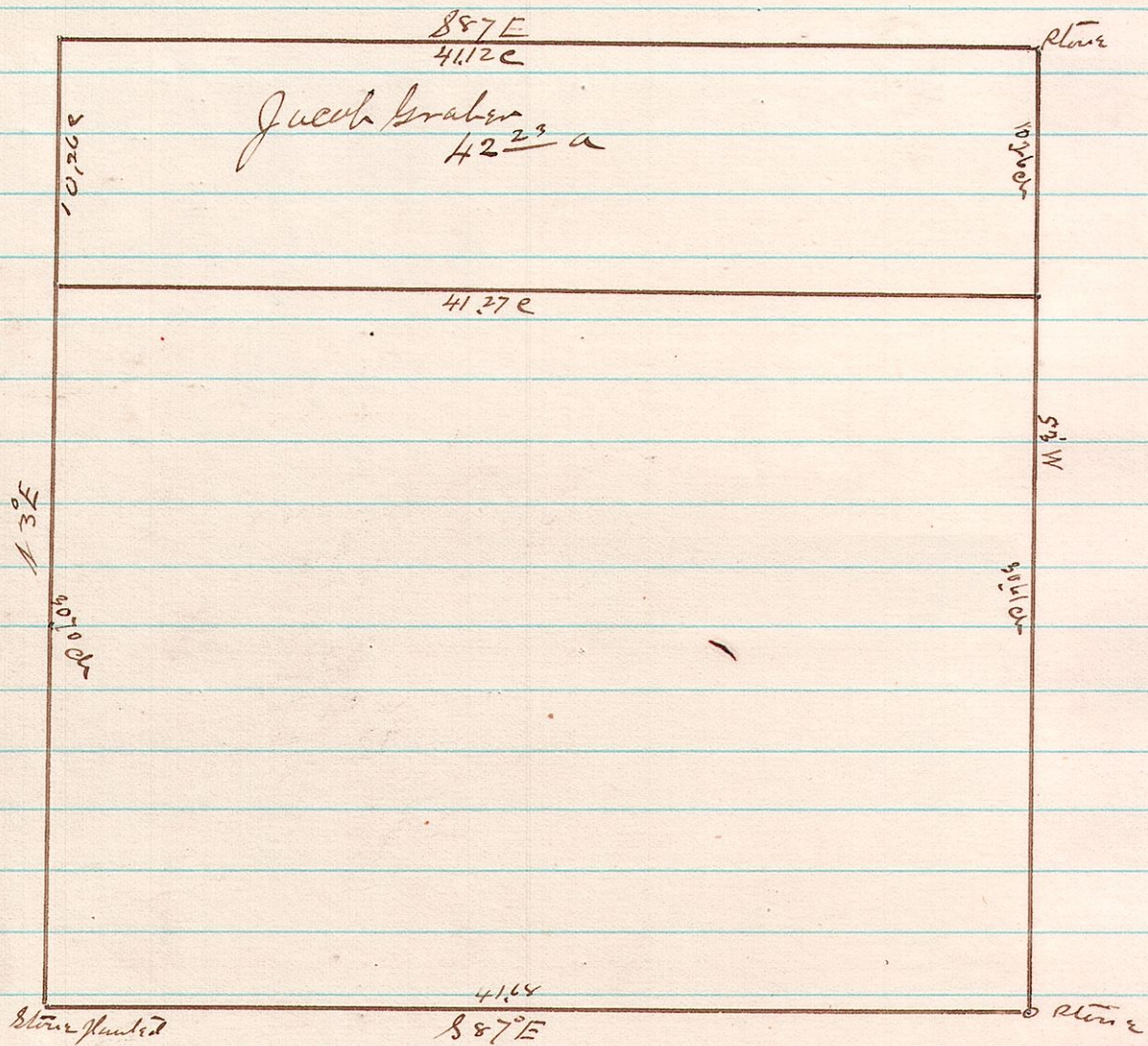
5-8-12 S.W. 4



A Survey made for Christian Fisher and Phineas Fair of a Part of the South West Quarter Sec 12 T. 8 R. 5 on the 15<sup>th</sup> day of April 1885  
 Peter Fisher and Henry Haffner chainmen sworn  
 James L. Ballou  
 County Surveyor

460

5-8-14 S.E. 4



A Survey made for Jacob Graber and father of the S.E. 4 Sec 14 T. 8 R. 5  
 Cutting 42 2/3 acres off of the north side thereof on the 14<sup>th</sup> day of April 1885  
 James L. Ballou  
 County Surveyor