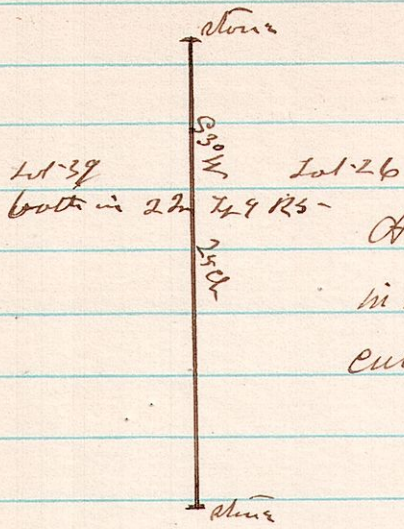


440

453

5-9 ^{8 22} 26 & 39 line between

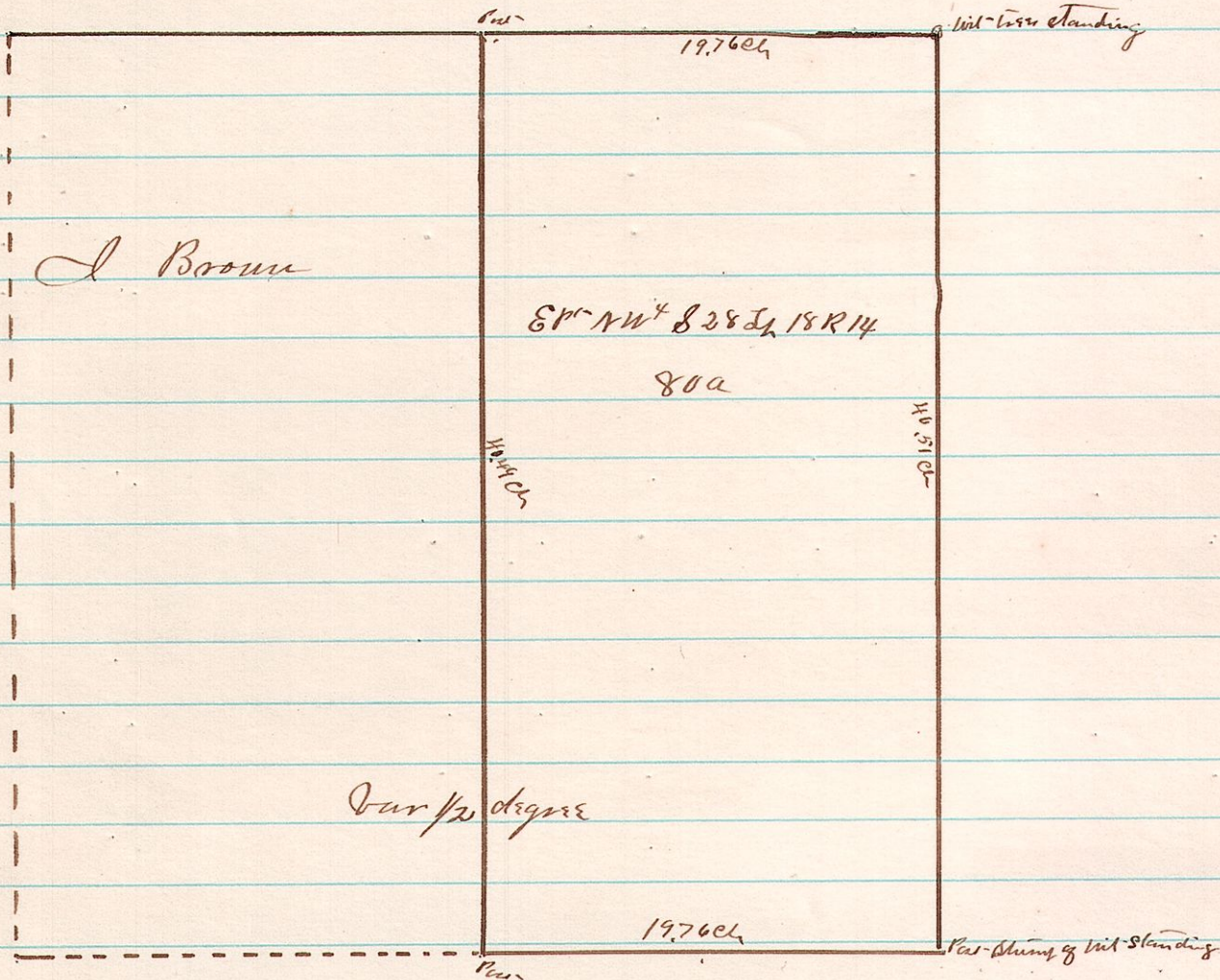


A Survey made for Charles Seaman of a line between Lots 26 & 39
 in the 2^d 2^d 9 R5 over which there was some trouble about
 cutting some trees Surveyed March 24th 1885

James B. Calhoun
 County Surveyor

454

14 18 28 E^{1/2} NW^{1/4}



A Survey made for Isaac Brown of the East 1/2 NW^{1/4} S 28 T₄ 18 R 14
 on the 30th day of March 1885

James B. Calhoun
 County Surveyor