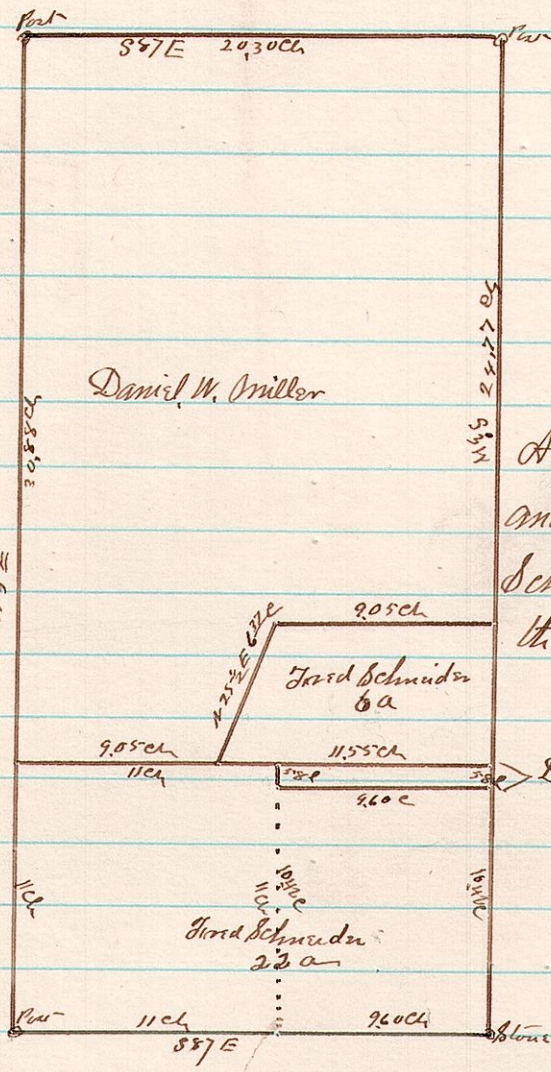


451

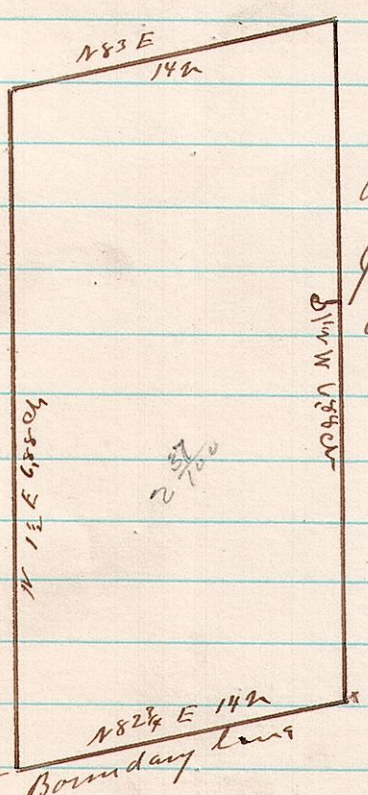
5 9 3 E² SW⁴



A Survey made for Daniel W Miller Jared Schneider and Ann Heidlauf who had sold 22 acres to Jared Schneider of the E² SW⁴ Sec 3 T⁹ R⁵ on the 26th day of March 1885
 James C. Galhoun
 County Surveyor

452

12 14 12 Pt-Fractional



A Survey made for a description for Frederick Darnhart of a part of Fractional Section No 12 in T¹⁴ R¹² on the 27th day of March 1885
 James C. Galhoun
 County Surveyor

812
 812
 S.W. Cor Sec 12