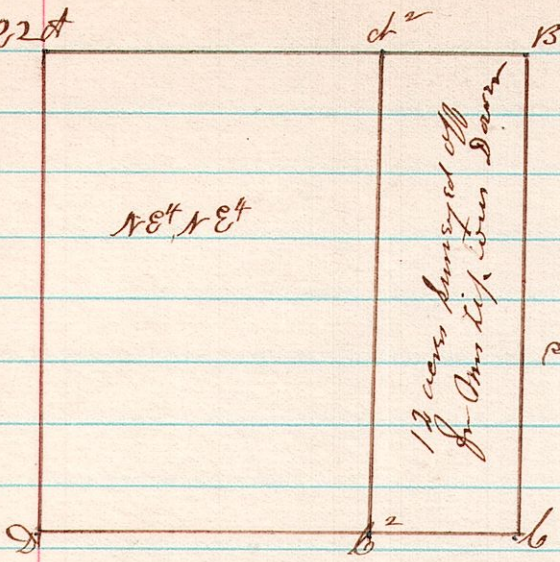


443 2 1/2 Sec
15 19 22A

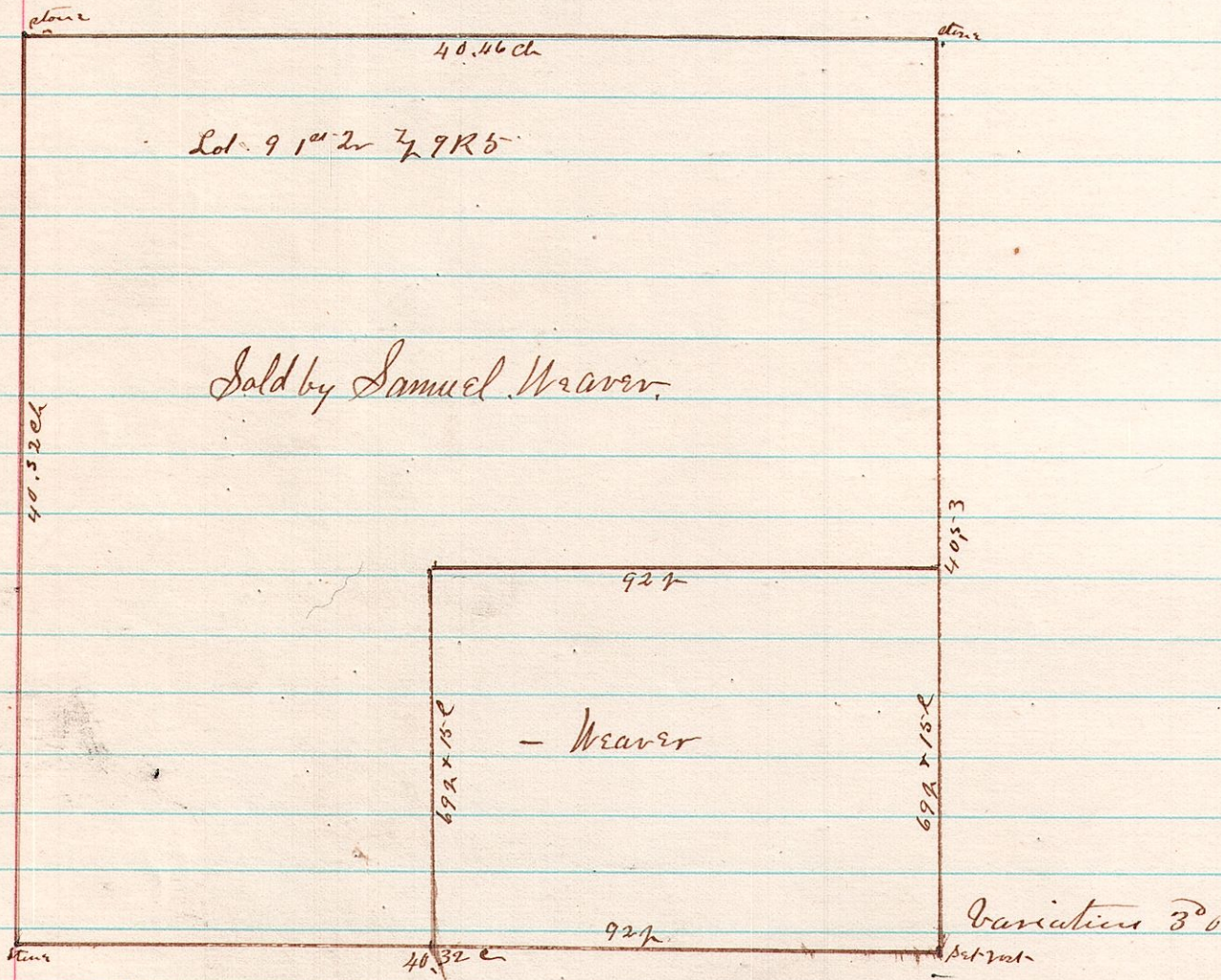


A Survey made by order of the Court of Common Pleas
in the Spring of 1885 The lower struck off was afterwards
sold with the 40 acre tract - This piece is very hilly

James C. Calhoun
County Surveyor

444

5 9 12
9



A Survey made for Samuel Weaver of Lot 9 in 1st Quarter Township 9 Range 5
on the 13th day of March A.D. 1885

James C. Calhoun
County Surveyor