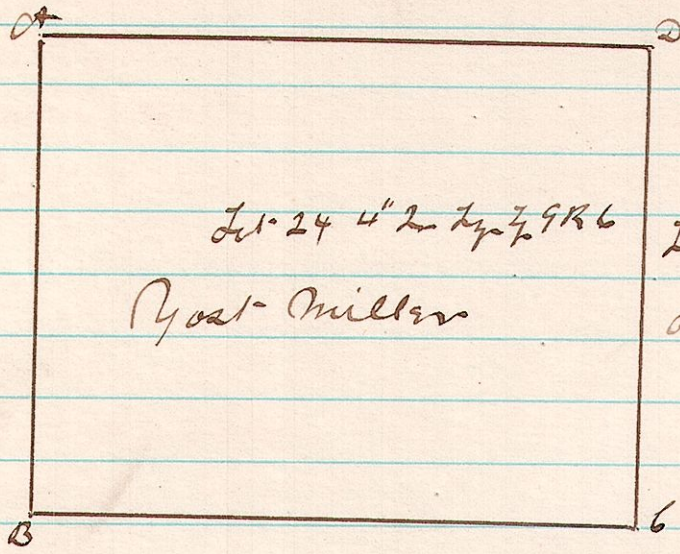


435 6 9 24 E & W lines



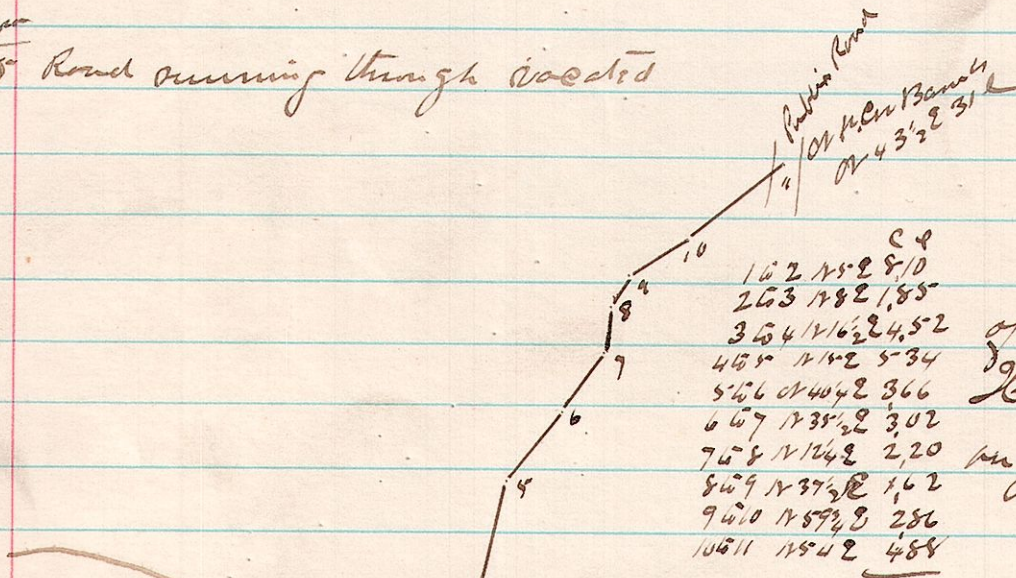
A Survey made for Post-Miller & Miller of the lines AB and CD, being the East- and West-lines of Lot 24 1/2 in Tp 7, R 6 on 26<sup>th</sup> day of April 1882  
James C. Callhoun  
County Surveyor

436

15 20 36 A Survey was made of the East part of the North East Quarter Sec 36 in Tp 20 Range having run and established the lines around the entire E 1/2 of said Quarter for Houses Logins and others in May 1882 established corners where there were none and straightened the lines particularly the East-line of said E 1/2  
James C. Callhoun  
County Surveyor

437

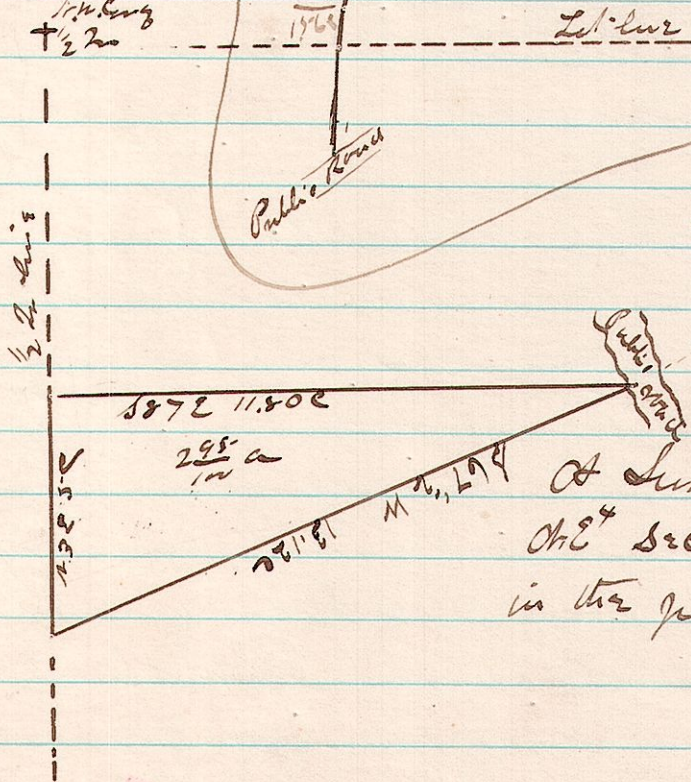
7 9 25<sup>th</sup> Road running through vacated



A Survey made by order of the Probate Judge of a road to be vacated running East-South of Andersons House in Tp 2, R 7 on Jan 27. 1882 James C. Callhoun  
County Surveyor

438

8 8 20 0° E 2 N E 4



A Survey made for Michael Brown of a part of the East 1/2 of the Sec 20 in Tp 8 Range 8 to determine the number of acres in the piece on the 7<sup>th</sup> day of December 1882  
James C. Callhoun  
County Surveyor