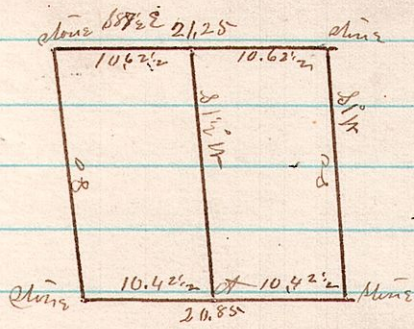


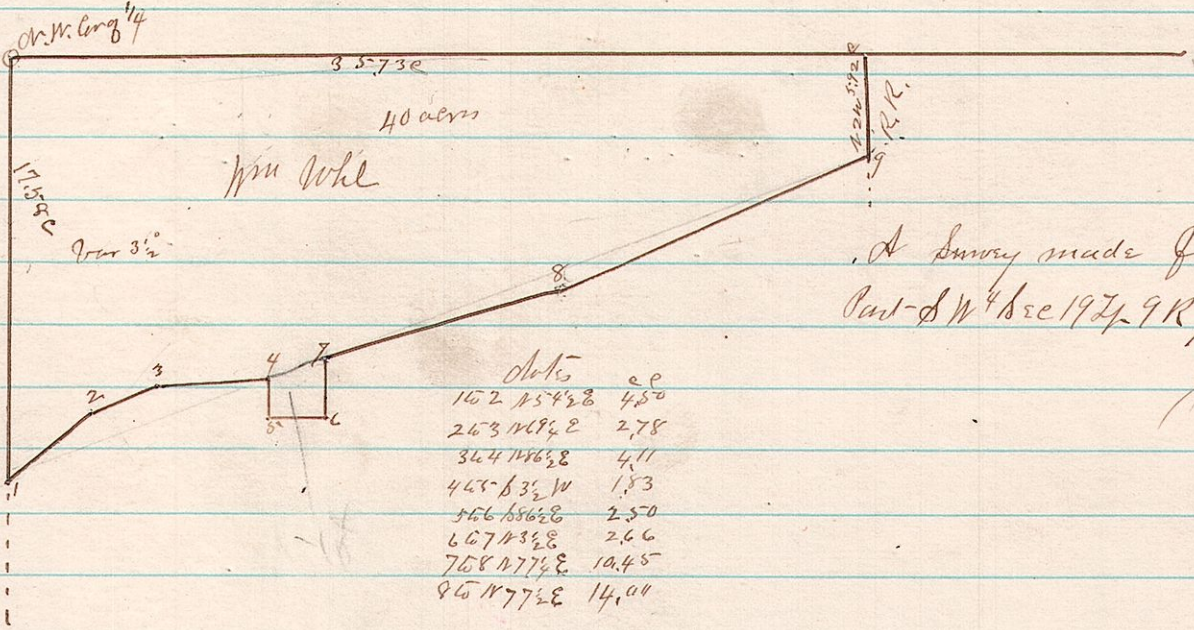
No. 428 8 8 13 88° 48'



A Survey made for Martin Purdy dividing equally the SE<sup>1/4</sup> of the NE<sup>1/4</sup> Sec 13 on Tp 8 R 28 S Surveyed December 30<sup>th</sup> 1884  
James C. Calhoun County Surveyor

Witness  
A 130.14 180 deg 110' West - 40' 20"  
Chad. 7 " 837' W 29 1/2'

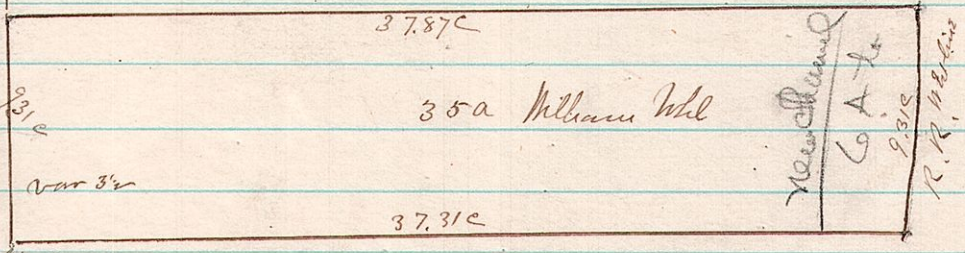
No. 429 7 9 19 SW 4



A Survey made for William Wohl of the North West Part of SW<sup>1/4</sup> Sec 19 Tp 9 R 7 on the 25<sup>th</sup> day of February 1885  
James C. Calhoun County Surveyor

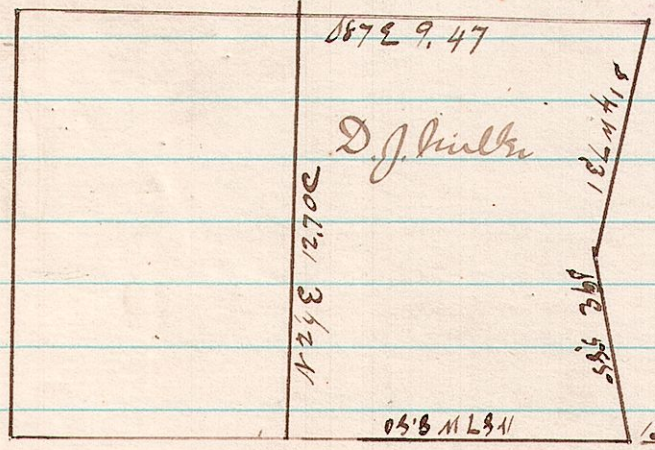
163 5  
33 70  
29 24  
33 04

No. 430 7 9 19 SW 4



A Survey made for William Wohl & William Wharton of the S.W. Part of SW<sup>1/4</sup> Sec 19 Township 9 R 7 on the 26<sup>th</sup> day of February 1885 James C. Calhoun County Surveyor

No. 431 6 9 15 4 2



A Survey made for Noah C. Schlatoch of the S.E. Part of Lot 15 in 4<sup>th</sup> 2<sup>nd</sup> Tp 9 Range 6 on the 24<sup>th</sup> day of February 1885  
James C. Calhoun County Surveyor

22<sup>nd</sup> Mar 2  
S.E. Cor 4  
Lot 15