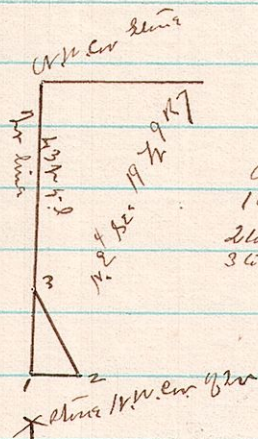


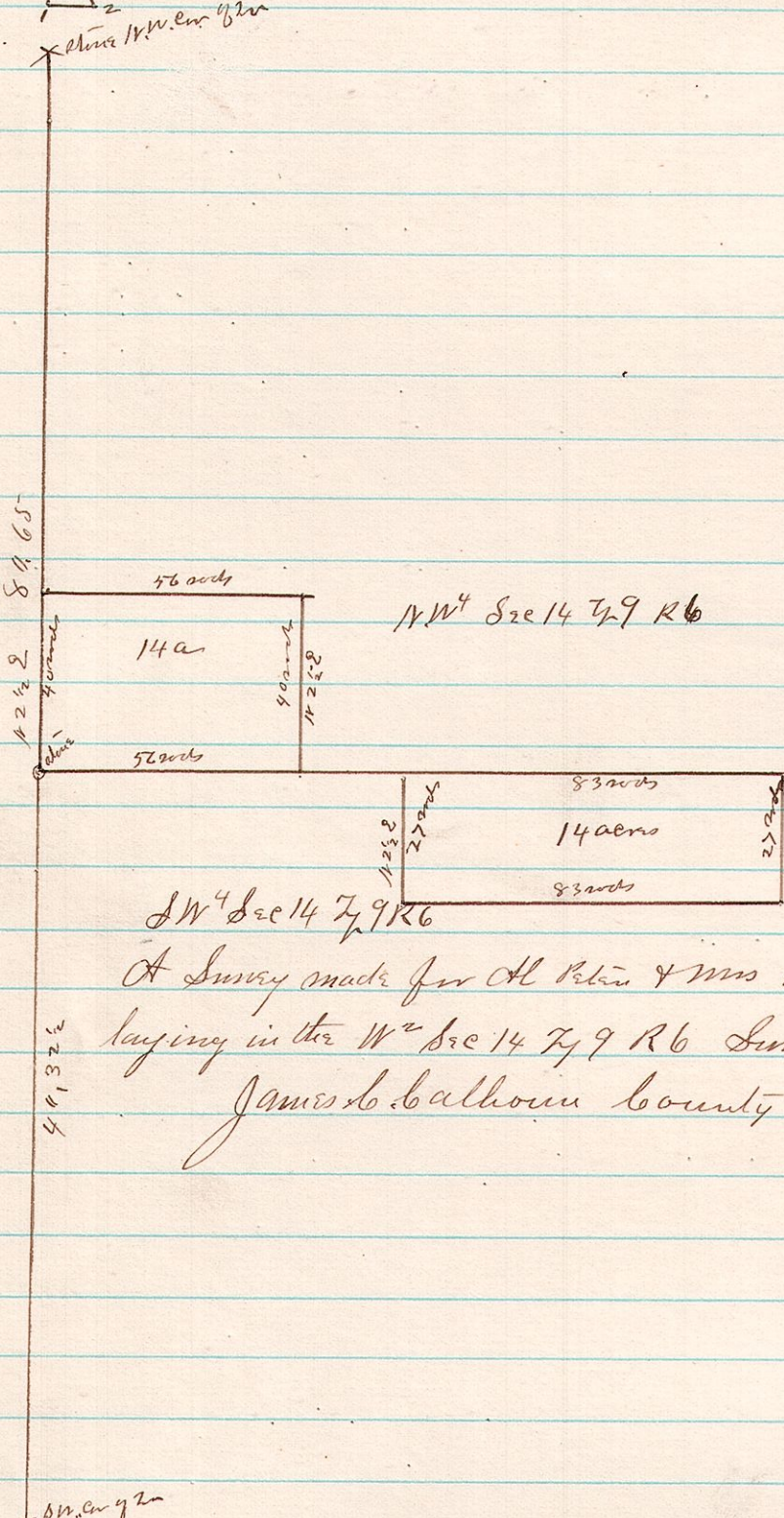
No. 421 7 9 19 8' NE<sup>4</sup>



Notes  
152.92 15'  
2163 1428W-19 1/2 58  
361 151 1/2 W 16 1/2 20'

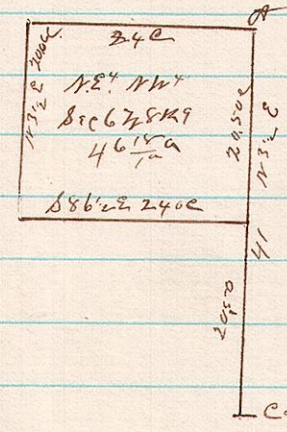
Robbins Lot -  
A Survey made by order of the town Council of a piece of land lying in the NE<sup>4</sup> Sec 19 T9 R7 Surveyed August 4<sup>th</sup> 1884 James B. Callhoun Co. Surveyor

No. 422 6 9 14 W<sup>2</sup>



NW<sup>4</sup> Sec 14 T9 R6  
A Survey made for Mr. Peter & Mrs. B. Masford of lines and lands lying in the W<sup>2</sup> Sec 14 T9 R6 Surveyed Aug 22<sup>nd</sup> 1884 James B. Callhoun County Surveyor

No. 423 9 8 6 NE<sup>4</sup> NW<sup>4</sup>



A Survey made for S. B. Peterson at a found original W. D. etc. standing though considerably decayed Surveyed December 1884 James B. Callhoun County Surveyor