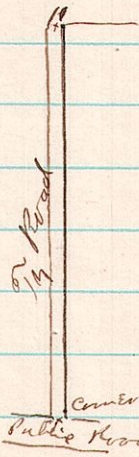


409

5 8 24 Road in SW⁴

No Road

J. Hutchins



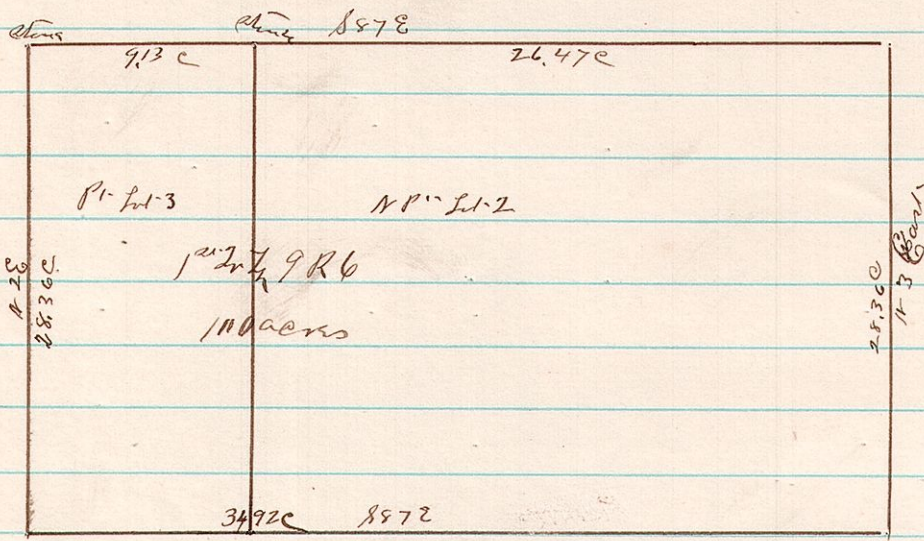
Notes
 1 S 2 1/4 W 4.09c
 To SW cor E 2 SW⁴
 Sec 24 T 8 R 5

A Survey made for John Hutchins of a township road from his land in the SW⁴ Sec 24 T 8 R 5 South to a public road Surveyed January 26th 1887

James C. Calhoun
 County Surveyor

410

6 9 1st 2-3 R 6

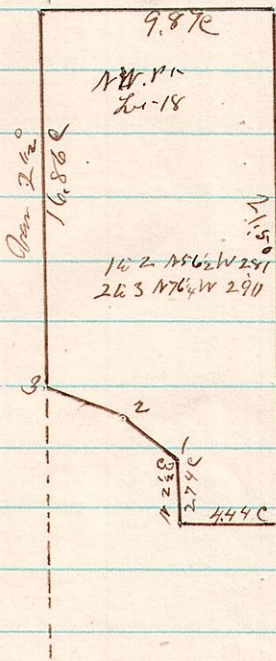


A Survey made for Abraham D. Smith of the Ch. P. Lot 2 and Ch. E. P. Lot 3 1st 2nd 3rd 9 R 6 Surveyed February 19 1884

James C. Calhoun County Surveyor

411

6 9 1st 18 N. 9 R 6



A Survey made by order of the Probate Court of the County of Barbary Troyer being the Ch. E. P. Lot 18 T 8 R 6 Surveyed April 14th 1884

James C. Calhoun County Surveyor