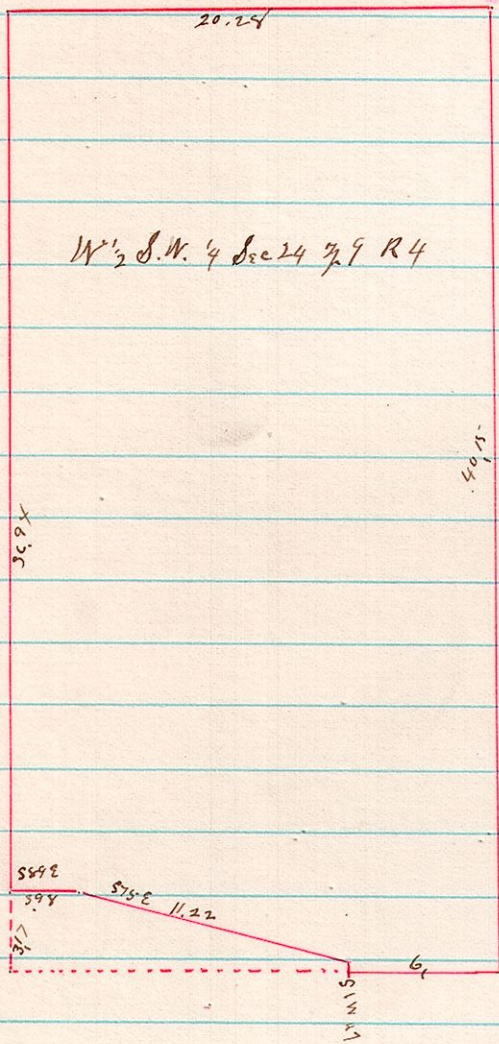
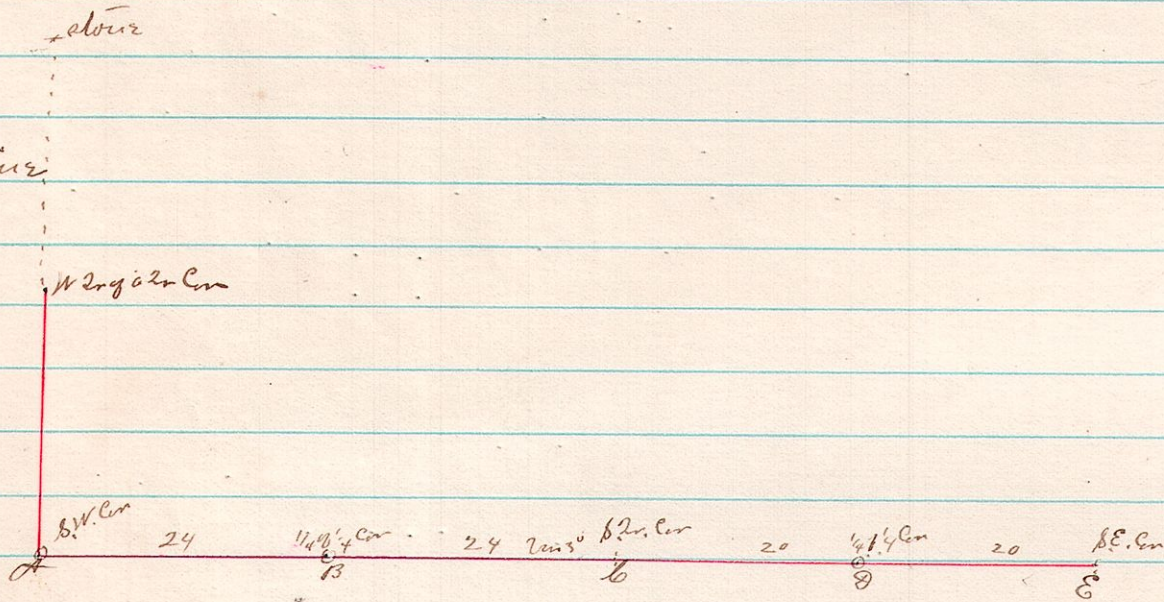


No 376 4 9 24 W 1/2 S.W. 4



A Survey made for Henry Miller April 24 1884
J. B. Calhoun
County Surveyor

No 377 8 9 5 S. line



A original white oak taken by Deert - still standing took for corner W. O. 8 A 27 3/4 W 49 1/2 l + chert 4 B 12 3/4 W 8 1/2 D
 B found stone north of granted took interest { W. O. 10 N 22 1/2 W 18 l and W. O. 6 N 5 1/2 W 19 l and
 C set post found original government corner one of W. O. 6
 D set post corner Surveyed this above April 17 1884
 E set post corner J. B. Calhoun County Surveyor