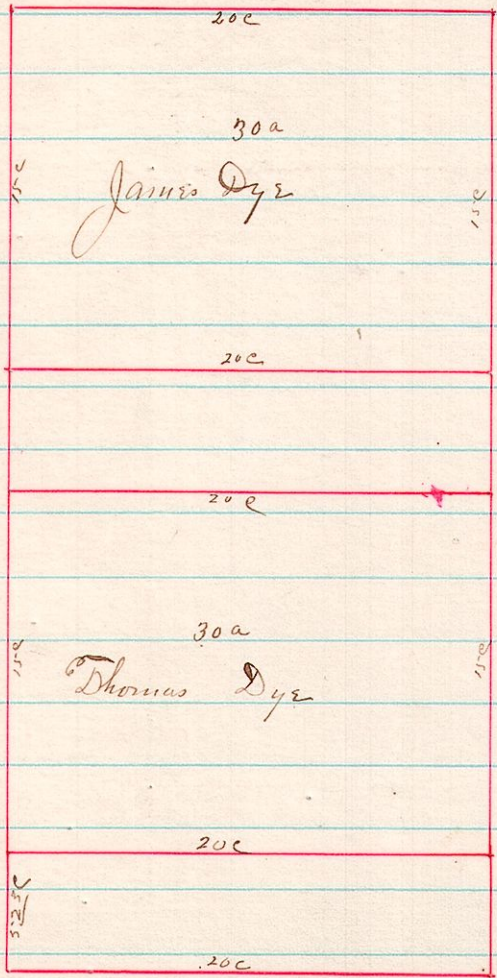


374

369 14 18 35 W 1/2 N.E. 4



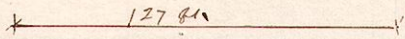
I certify this to be a true plat of a survey made
 at the request of James Dye for himself et al on
 the 11th day of March 1884 -

J. C. Callahan
 Co Surveyor

Variation in E & West lines 3°
 " " N & South " 1/2°

370

870 7 9 Lot 52 Millersburg Pa.

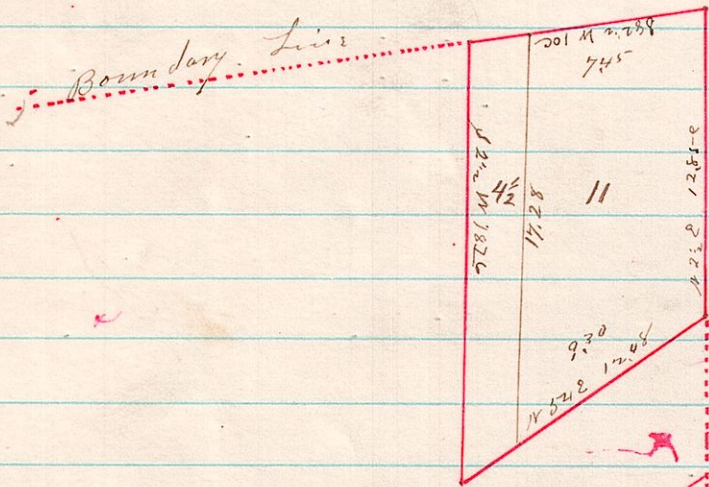


A Survey made to determine the location of the South line of
 Lot 52 in Millersburg, Pa. by request of J. J. Sullivan Aug 6th 1883

J. C. Callahan Co Surveyor

371

6 10 20 N.E. corner



I certify this also to be a true plat of a survey made for
 Alfred Snyder March 13th 1884

J. C. Callahan
 Co Surveyor