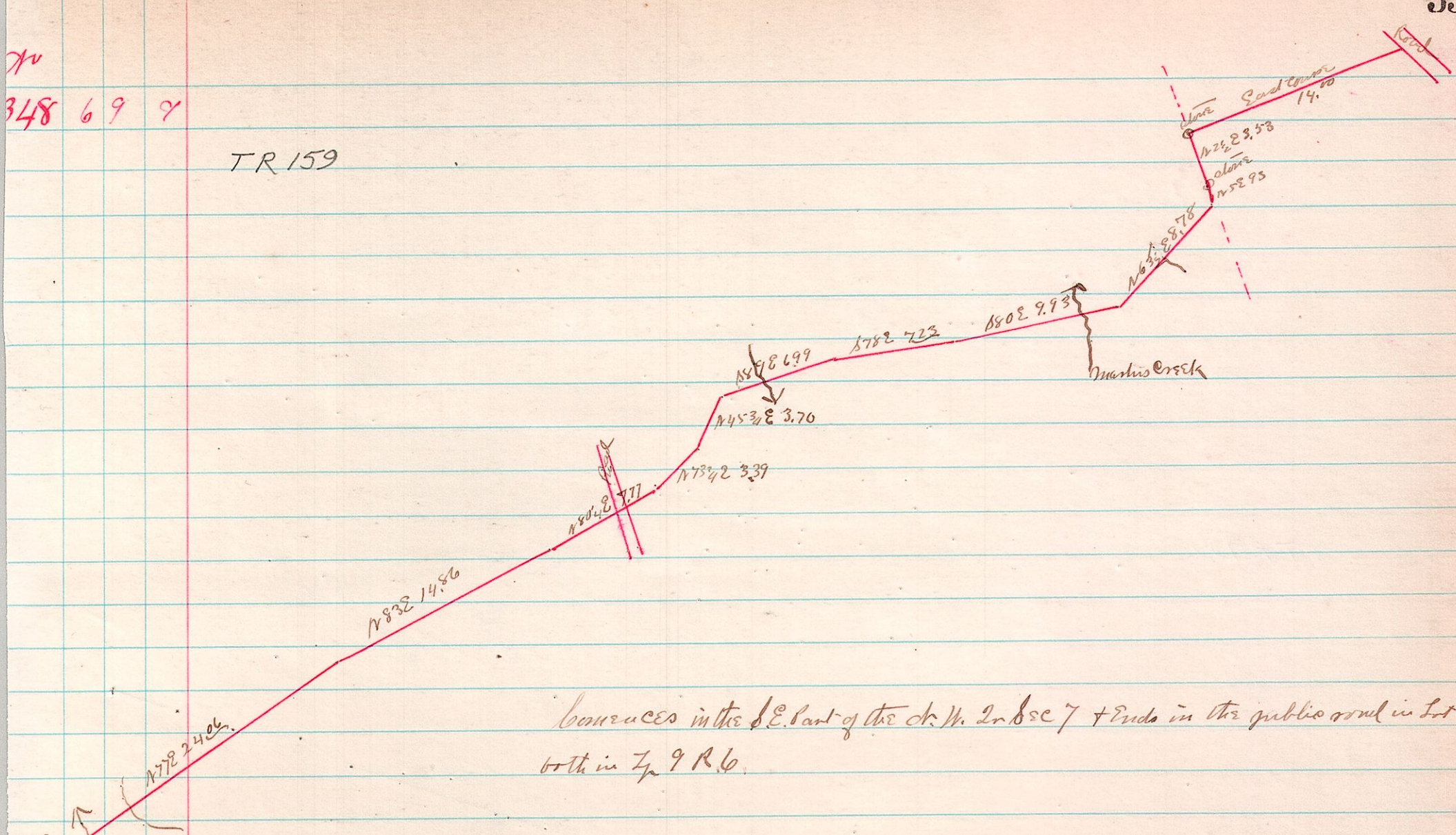


70
348 69 7

TR 159



Commences in the S.E. part of the dr. W. 2nd sec 7 + ends in the public road in T. 18
both in R. 9 R. 6.

Survey of a road petitioned for by Eli D Miller et al Surveyed April 10/83
 by order of commissioners
 John Sharp Sr }
 James Beechey } viewers
 John Hitchcock }
 J. C. Colburn
 Surveyor