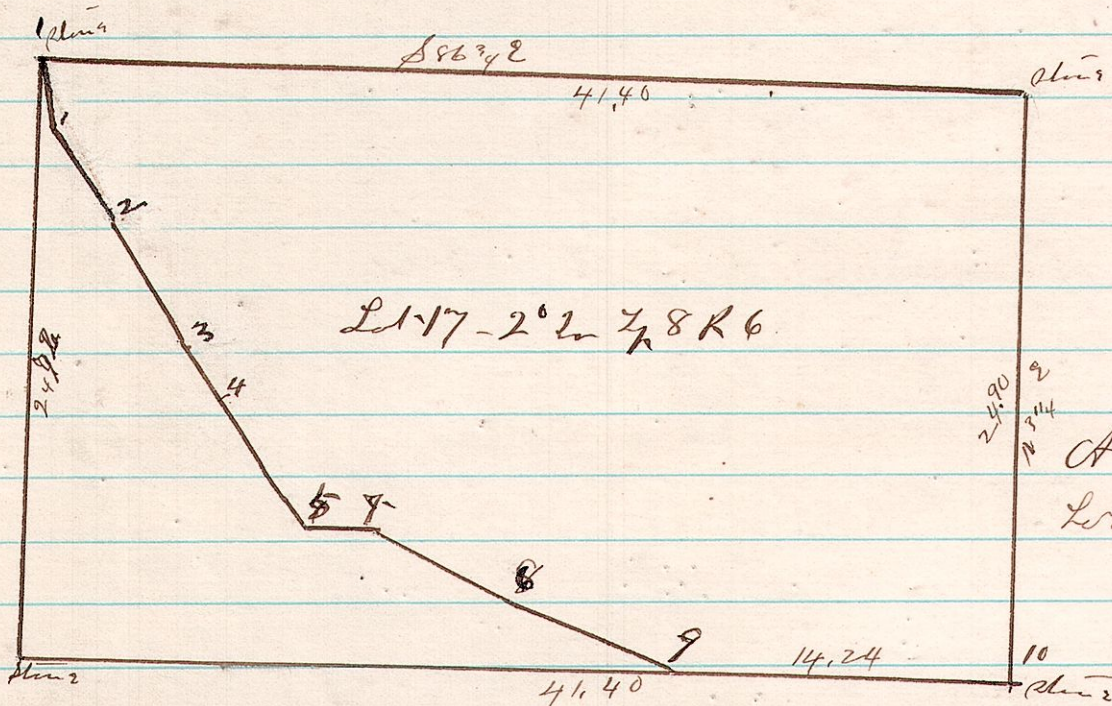


6817²



Lot 17 - 2° 2' 8 R 6'

Notes	c	e
162 89'2"	2.84	
263 897'2"	434	
364 8 342	5.46	
465 6 39'4"	340	
566 8392	5.95	
667 1633'4"	266	
768 848'2"	722	
869 852'2"	745	
9610 886'4"	14.24	

A Survey made for John Patterson dividing
 Lot 17 - 2° 2' 8 R 6 Surveyed March 1883
 James C. Callhoun
 County Surveyor