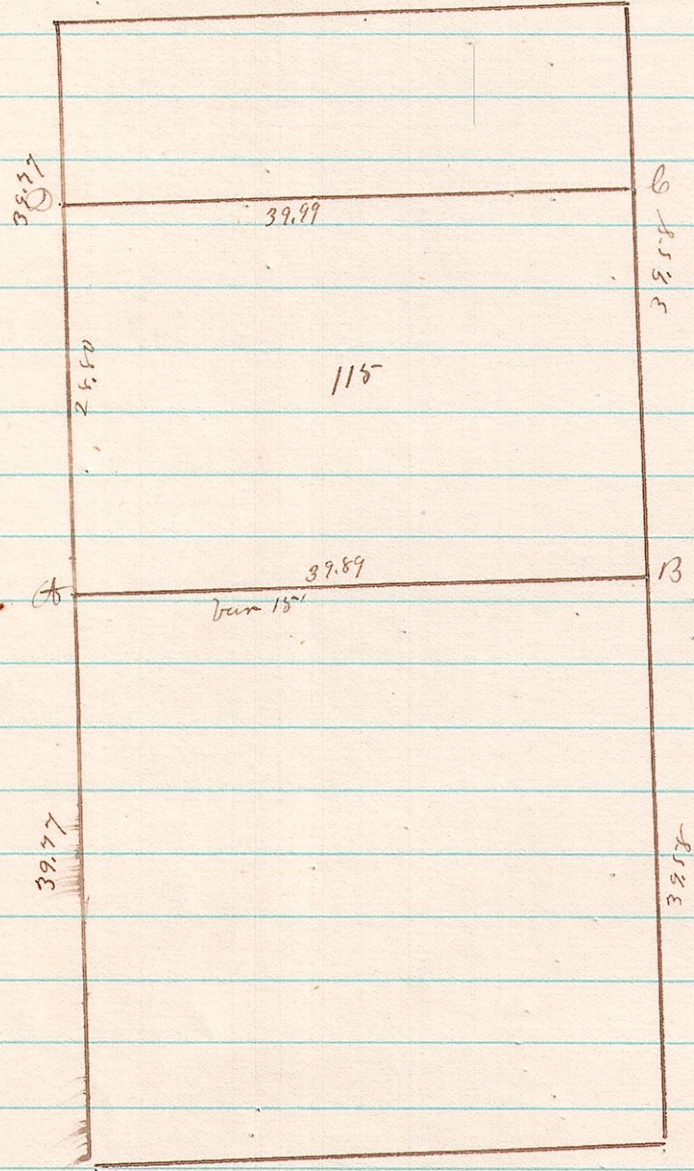


319 15 20 35 E 1/2



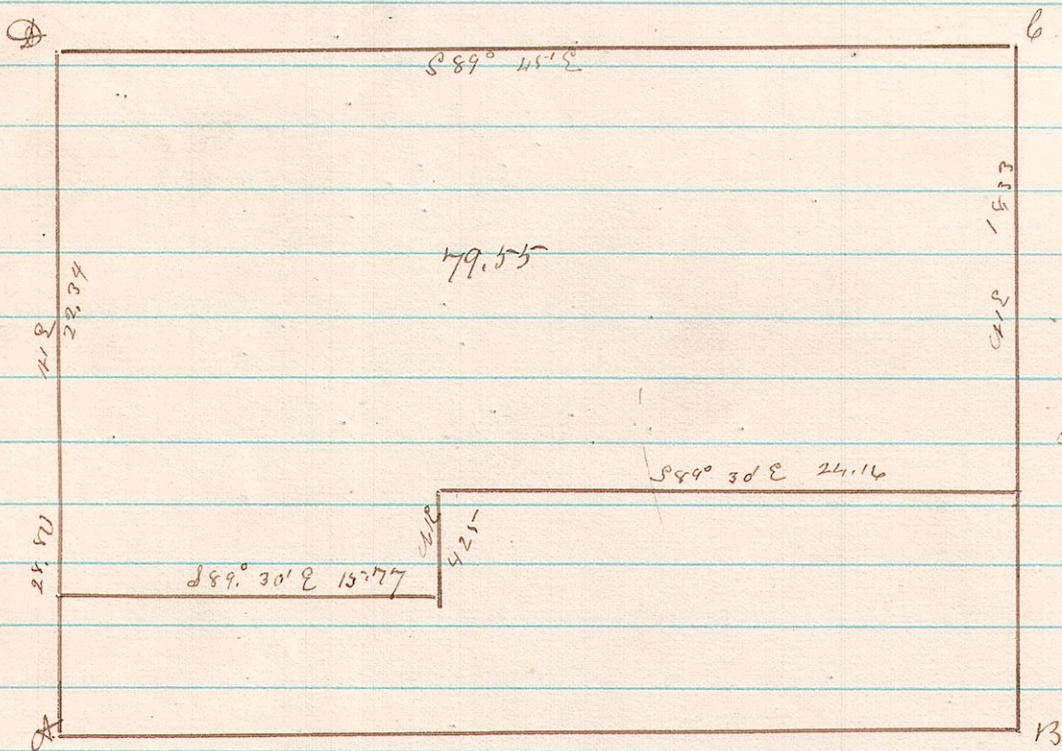
A Survey made for James Liggitt Sr of to
 E 1/2 of Sec 35 T 20 R 15 to determine the
 boundaries of a 115 acre piece owned by
 him

I proceeded and Established corners
 at A B by dividing the Section Equally then
 measured off the 115 acres

Surveyed July 25 1882

J. B. Allison Co Surveyor

320 15 20 35 P 1/4 E 1/4



A Survey made for James Liggitt
 cutting 79.55 acres of 115 acres off of
 the South side of the Ch. E. 1/4 Sec 35 T 20
 R 15

Surveyed August - 1882

J. B. Allison Co Surveyor