

No

308 13 14 20+29 Quarter Section corner between sections 20+29 T<sub>14</sub>R<sub>13</sub>  
Elm 8 ct 76 W 85 1/2 S + Elm 4 168 E 19 1/2 Put equidistant between section corners  
I certify this to be correct James C. Callahan  
County Surveyor

No

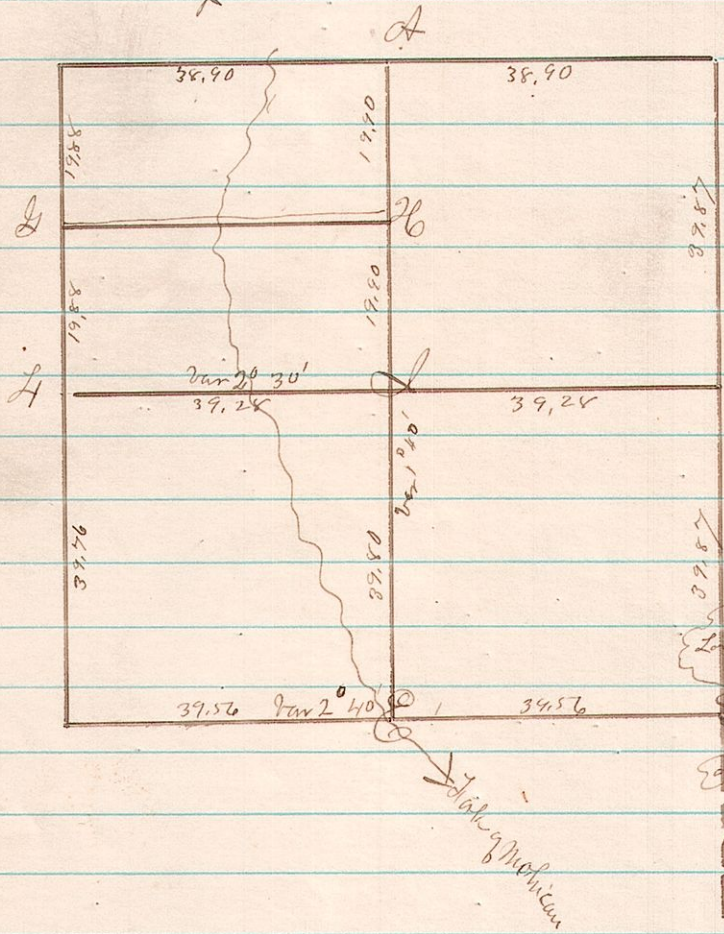
309 14 18 23, 24, 25+26 - Bearing Trees for the corner of sections 23, 24, 25+26 T<sub>18</sub>R<sub>14</sub>  
Black Oak 14 ct 66 1/2 E 20 I certify this to be correct  
Surveyed July 24<sup>th</sup> 1866 James C. Callahan Co Surveyor

No

310 15 20 23, 24, 25+26 Section corner between sections 23, 24, 25+26  
Witness Trees White Oak 30 ct 11 E 41 + White Oak 6 S 27 W 39  
James C. Callahan  
Co Surveyor

No

311 15 20, 22 Sec 22 T<sub>20</sub>R<sub>15</sub>



Witness Trees

- A White Oak 36 ct 16 W 17 + White Oak 6 S 3 E 15 (new)
- B White Oak 36 ct 15 E 15
- C White Oak 14 West-17 + White Oak 13 South 47
- D Stone in Swamp
- E maple 20 S 2 E 108 + Cherry 10 ct 2 W 2 98
- F Swamp White Oak 16 S 77 W 21 + Swamp White Oak 12 S 88 E 33
- G Black Oak 6 ct 3 E 12
- H White Oak 14 South 17
- I White Oak 16 ct 23 W 1 + White Oak 18 S 60 E 8

I certify the above to be a true plat  
this 20<sup>th</sup> day of Oct 1852 James C. Callahan  
Co Surveyor