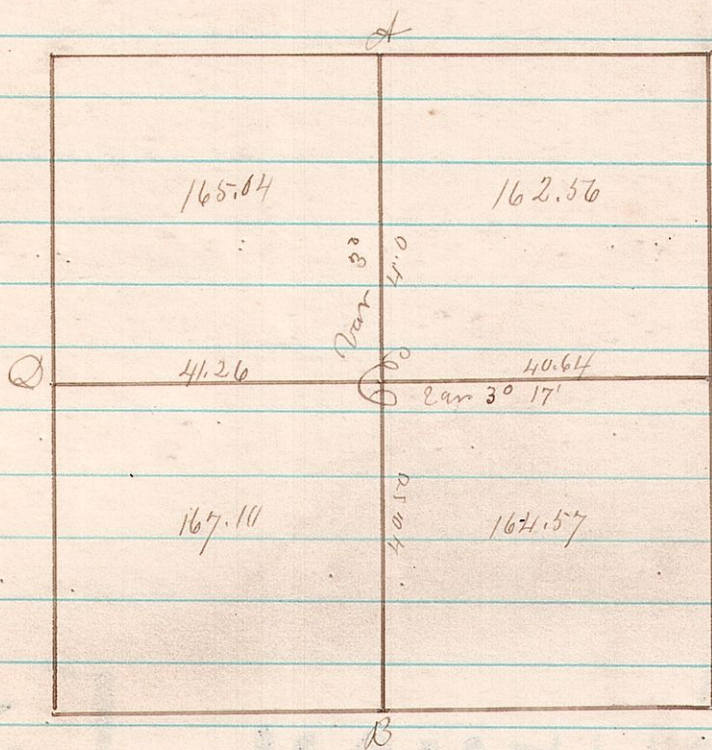


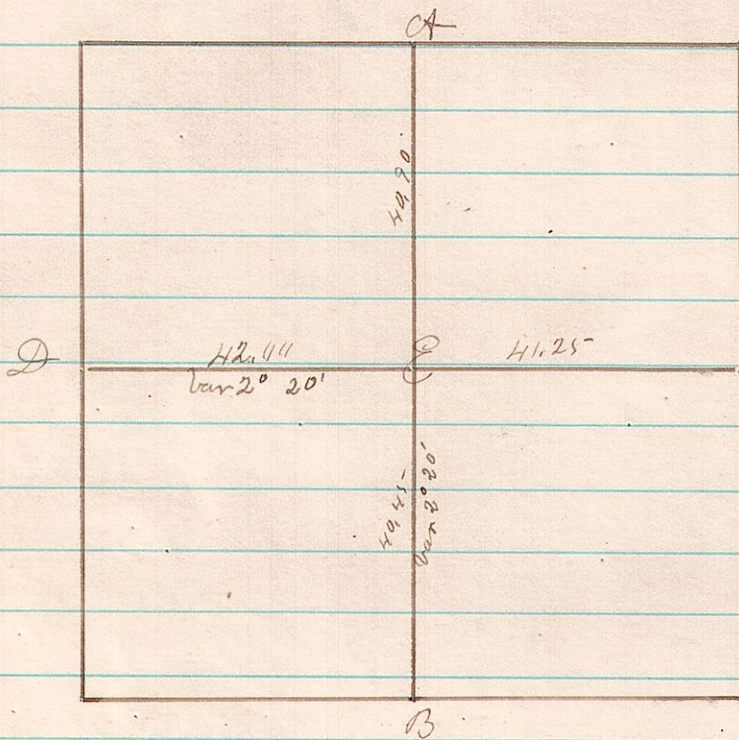
305 12 15 29 Sec 29 T₄ 15 R 12



Witness Trees
 A White Oak 12 corner
 B Hickory 14 S 36 W 26 + Hickory 12 N 38 E 83
 C Hickory 6 S 78 E 19 + Gum 10 N 58 W 24
 D Maple 16 S 30 E 16 + Ash 12 S 88 W 18
 E White Oak 10 S 74 W 37 + White Oak 16 East 50
 I certify this to be a true plat - this 20th
 day of October 1882 James C. Callow
 Co Surveyor

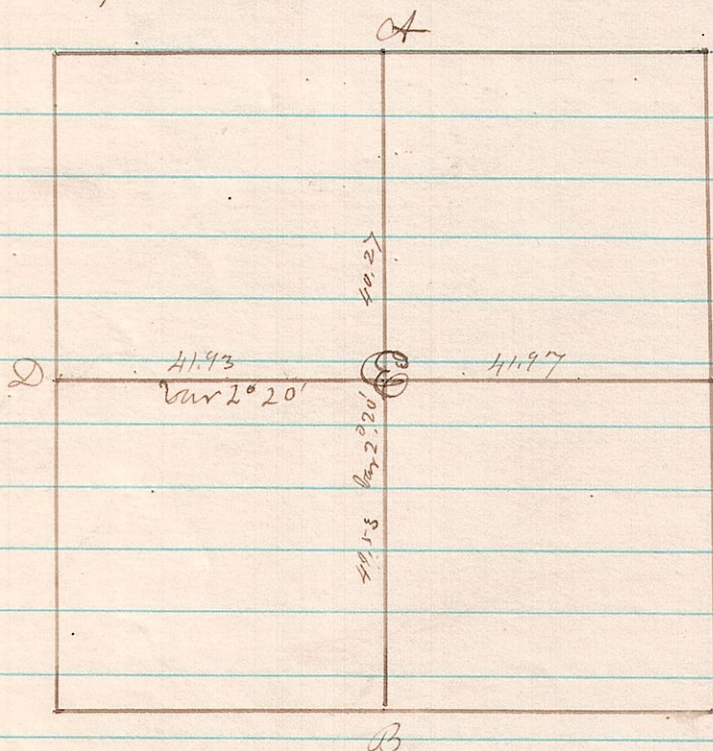
(1810)

306 12 15 33 Section 33 T₄ 15 R 12



Witness Trees
 A Hickory 12 corner
 B Gum 9 N 15 E 13 Beech 17 S 33 E 20
 C White Oak 10 S 16 W 33 Gum 3 S 88 W 20
 D Gum 6 S 80 E 34 Paper 7 S 21 E 20
 E Gum 10 S 39 E 16 White Oak 15 N 39 W 29
 I certify this to be a true plat -
 this 20th day of Oct 1882 James C. Callow
 Co Surveyor

307 12 15 28 Sec 28 T₄ 15 R 12



Witness Trees
 A White Oak corner
 B Hickory 12 corner
 C White Oak 14 N 85 W 38 + White Oak 11 S 41 W 23
 D Hickory 6 S 78 E 19 + Gum 10 N 58 W 24
 E White Oak 20 N 28 E 20 + Gum White Oak 16 S 23 E 40
 I certify this to be a true plat - Oct 20 1882
 James C. Callow Co Surveyor

1817