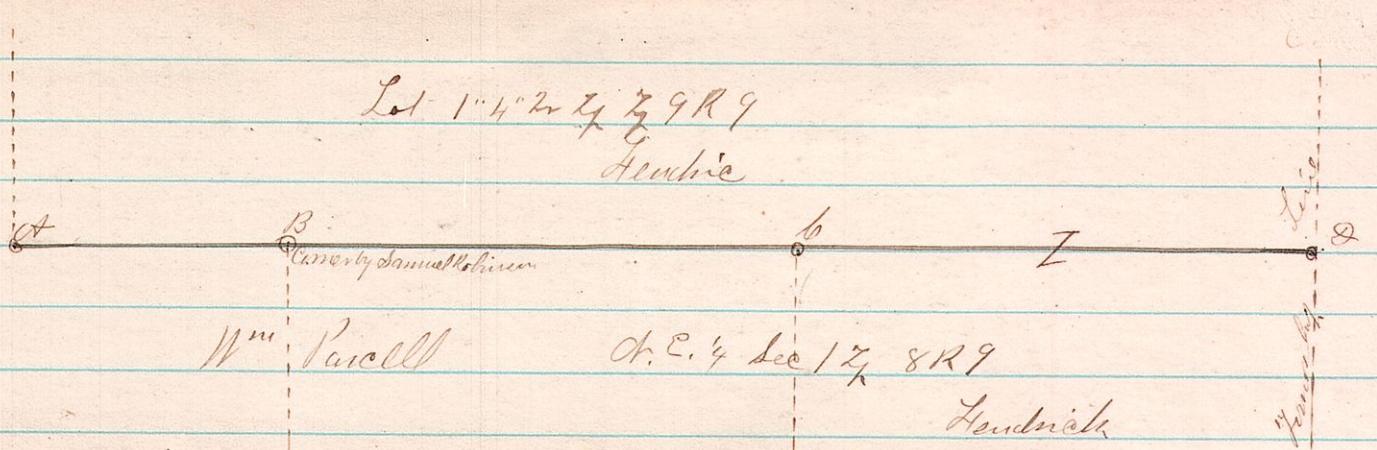


No 9 9 1 4 1/2 } line between
 302 9 8 1 1/2 }

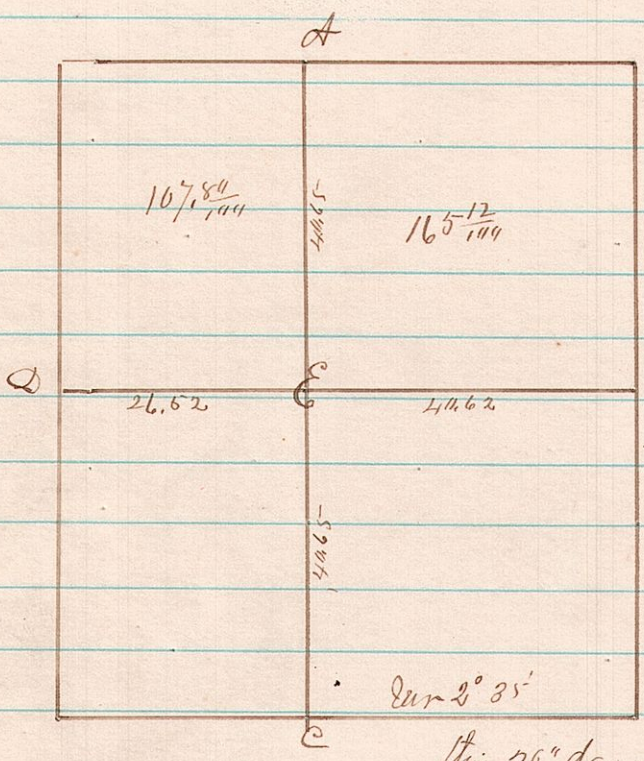


Survey made for Wm Parcel & Hendrick of the line between Ch. E. 1/4 NW 1/4, NW 1/4 NE 1/4 of Sec 12 and Lot 1 1/4 Sec 12 8 R 9
 Commenced at A (SW Cor Lot 1/4 run East (S 87 1/2 E) to Township line at D + set temporary stakes
 At D found original H.O. cut-in and found old iron marks - Stake set was 24 l North. Exact bar is 87° 15' - 16° 48' 59"
 Commenced at E (stake planted by S Robinson) run N 9° 1' E to C which was corrected and set on straight line with A & D
 Run back compass line from C on corrected variation and struck corner B. and A completing the survey
 Witness true for C B.O. 24 S 13 W 8 l + do 12 S 2 E 45 l

Surveyed Nov-16-1882

J. C. Calhoun
 Co Surveyor

No R 2 8
 303 12 15 31



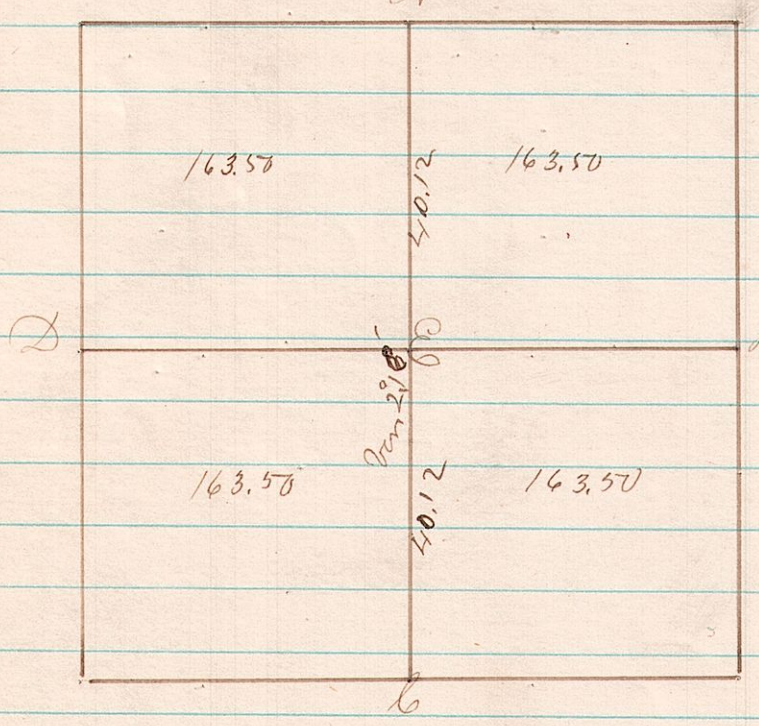
From South 2nd post run random line of on bar 2° 30' 40' lot post H. 30 to East and West Section line fell 1.85 links to the left - corrected back variation 1° 42' Witness Trees

- A White Oak 20 Ch. W 191 do 13 S 7 W 2 l
- B H.O. - S 45 E 28 l do 18 S 5 W 30 "
- C Hick 10 S 8 W 4 l Maple 10 Ch 14 E 14 "
- E Dog wood 5 S 26 1/2 E 23 " B.O. 24 Ch 6 W 52 "
- D Iron 8 N 88 5 " W.O. 4 S 18 W 40 "

Surveyed March 23 1816
 Sec 31 T 15 R 12 I certify this to be a true plat
 this 26th day of Oct. 1882 James C. Calhoun Co Surveyor

No
 304 12 15 32

Sec 32 T 15 R 12



- Witness Trees
- A Hickory 14 S 36 W 26 l do 12 Ch 38 E 23 l
 - B Gum 6 S 8 E 34 + Poplar 7 S 21 E 3 "
 - C W Oak 24 S 10 W 28 + Hickory 10 N 30 E 15 "
 - D W. Oak 20 S 45 E 28 + H. Oak 18 S 5 W 3 "
 - E Maple 20 N 25 W 27 + Hickory 12 S 21 E 3 "

Surveyed March 23 1816
 I certify this above to be a correct plat
 James C. Calhoun
 Co Surveyor