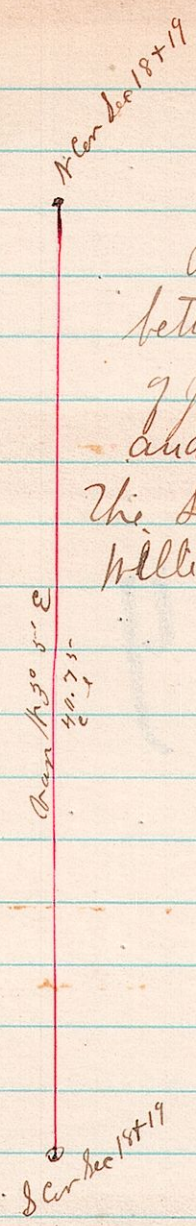


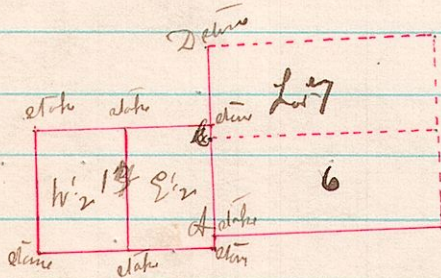
No 299 9 8 18+19



A Survey made at the request of William White of the Sec line between Sections 18+19 in Twp 8 of R 9 on the 7th day of June 1882 - The first 1/2 (South East) of the line was run and stakes set every 20 rods and afterwards corrected the South corner was established by testimony of William White

J. Lebalhorn
Co Surveyor

No 300 6 8 6+7+14

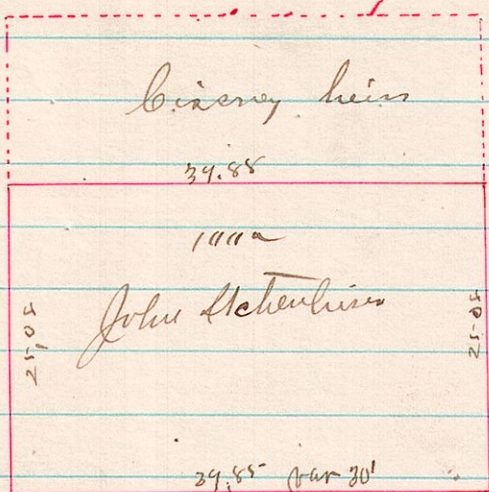


A Survey made for John & Sol Comrad to establish corner at A and the line AB which was found from the field notes also made an equal division of Lot-13 all of these lots lay in the 4th Quarter Twp 8 of Range 6 Surveyed June 8th 1882

J. Lebalhorn
Co Surveyor

A.B.D is not a straight line there is a difference of 1° 15' variation in it

No 301 13 13 5 88 N.W. 1/4



Surveyed from description in deeds on the 15th day of June 1882

James Lebalhorn
Co Surveyor