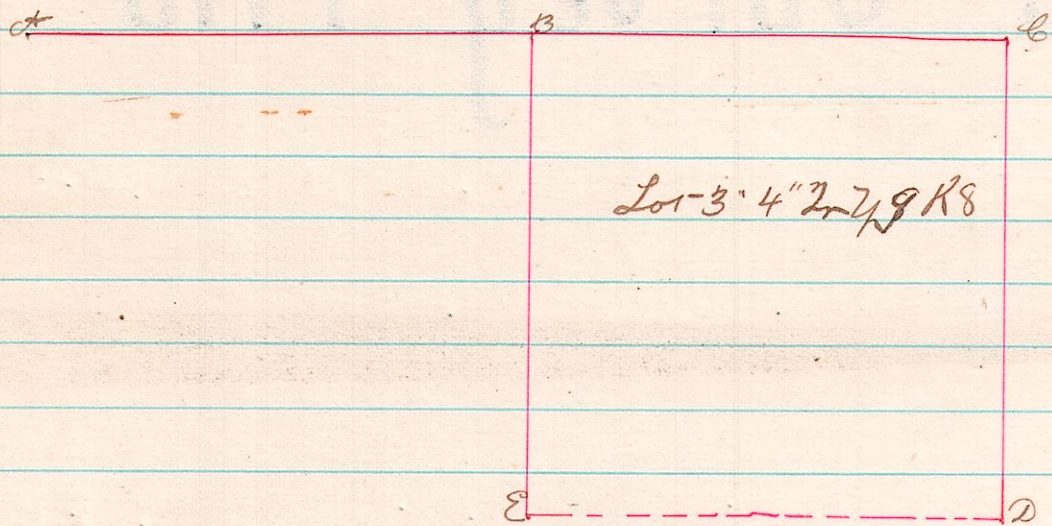


no  
297 8 9 3

A Survey made for Julia Lockhart - Samuel Bell & his son

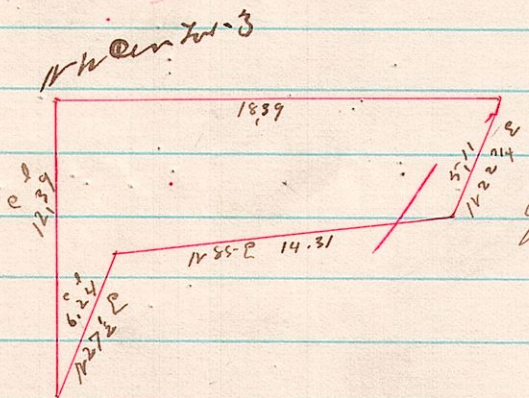


I hereby establish the stone at corner marked B as the North West-Corner of said Lot-3. Township & Range as aforesaid

A Survey to establish lines and particularly corners of Lot-3 in 4<sup>th</sup> 2<sup>nd</sup> 7<sup>th</sup> 9<sup>th</sup> R 8 On the 8<sup>th</sup> day of May 1882 I proceeded and found corner marked to from original witnesses and then ran the line to A at A found the stone At B there was a stone planted which was disputed I found this stone to be on a straight line between A & C - and made search for the original witnesses trees and found roots of the hickory just ~~at~~ where for the corner the West Corner of Lot-3 I therefore concluded that the stone planted was correct and where the original corner was passed by the Government Survey - At E & D found the original trees and planted the corners from them

J. G. Johnson  
Sd Surveyor

no  
298 8 9 3



A Survey made for Samuel Young of the West part of Lot-3 4 2 7 9 R 8 Survey May 8<sup>th</sup> 1882 J. G. Johnson Sd Surveyor