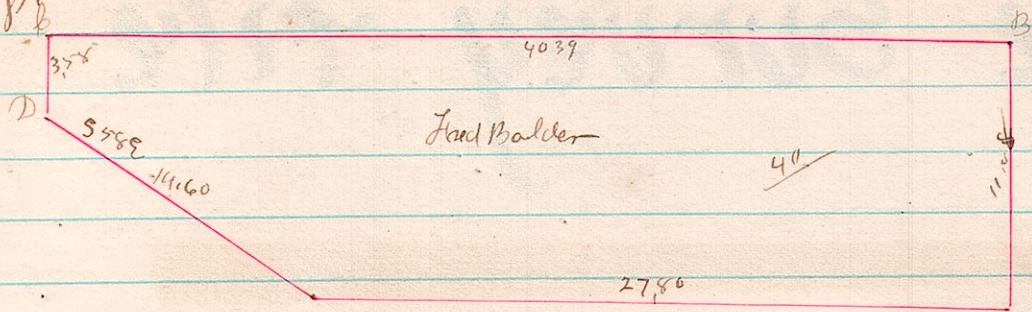
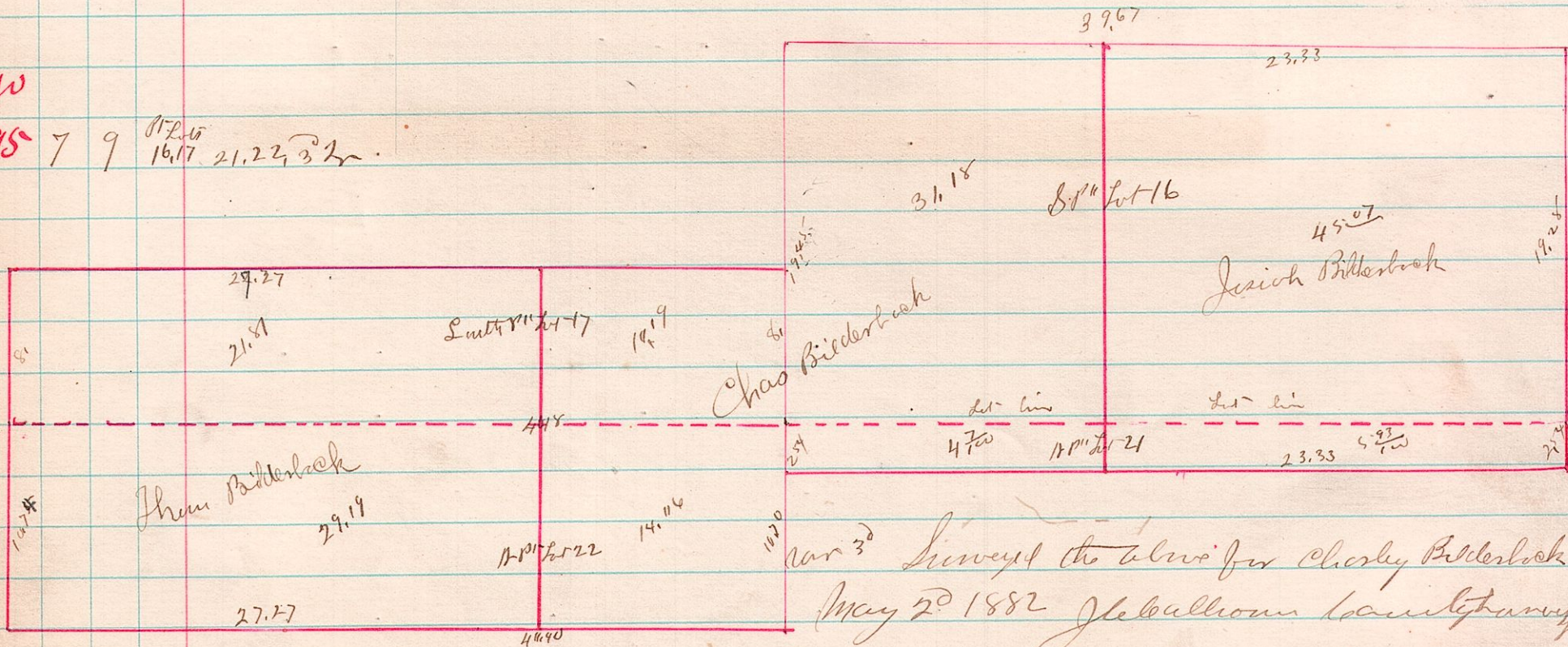


No 294 6 8 28 SE 1/4



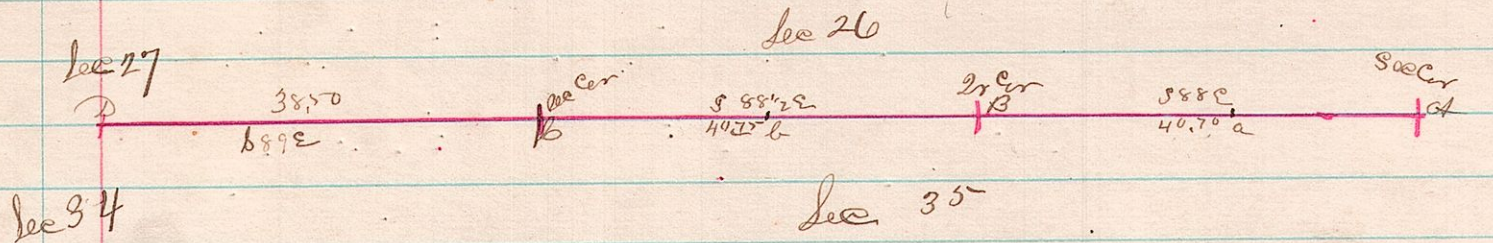
Surveyed May 1882 stones planted at B & D
J. L. Ballou County Surveyor

No 295 7 9 16, 17, 21, 22, 32



Surveyed the above for Chas Biederback
May 20 1882 J. L. Ballou County Surveyor

No 296 12 15 26, 27 34, 35 line between



A survey made for Sct. Kerr Et al Run the line A D Found old witnesses
trees at B & C run the lines in accordance and established and planted corners at a, b
and c at the other places corner stones were planted. Surveyed May 8 1882

James L. Ballou
County Surveyor