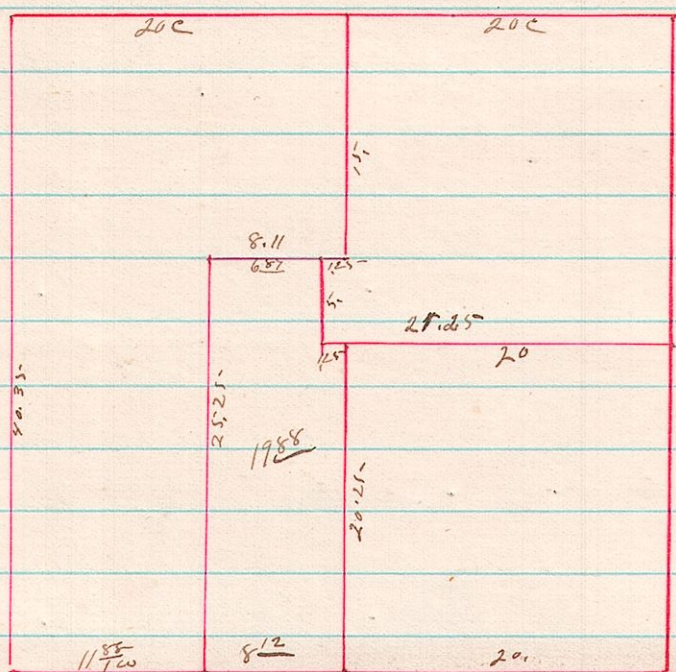
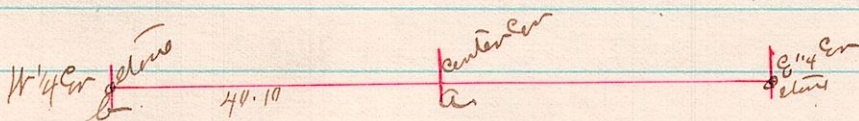


No. 292 14 18 35 1/4



A Survey made for Herman Schaff as admr of the ch 1/4 of Sec 35 in Township 18 of Range 14  
James McCallum  
County Surveyor

No. 293 13 13 8 Center line East & West



A Survey made for Melvin Graven Mrs Graven his sisters and Hugh McCallum on the 20<sup>th</sup> day of April 1882. I run the line from a stone established at the E 1/4 cor to an established stone at the W 1/4 cor of Sec 8 in T. 13 of R. 13 and established the center corner & the line ab stone placed at a sixth brick-crocker & a piece of ginch at the bottom - the witness tree at a was a W.B. stump standing the tree was cut recently - the <sup>corner</sup> was established from this tree and in accordance with the line run - Mr Currey - McKinley - Hugh McCallum Mrs Graven & Mel Graven were present at the setting of the corner stone

James McCallum  
County Surveyor

