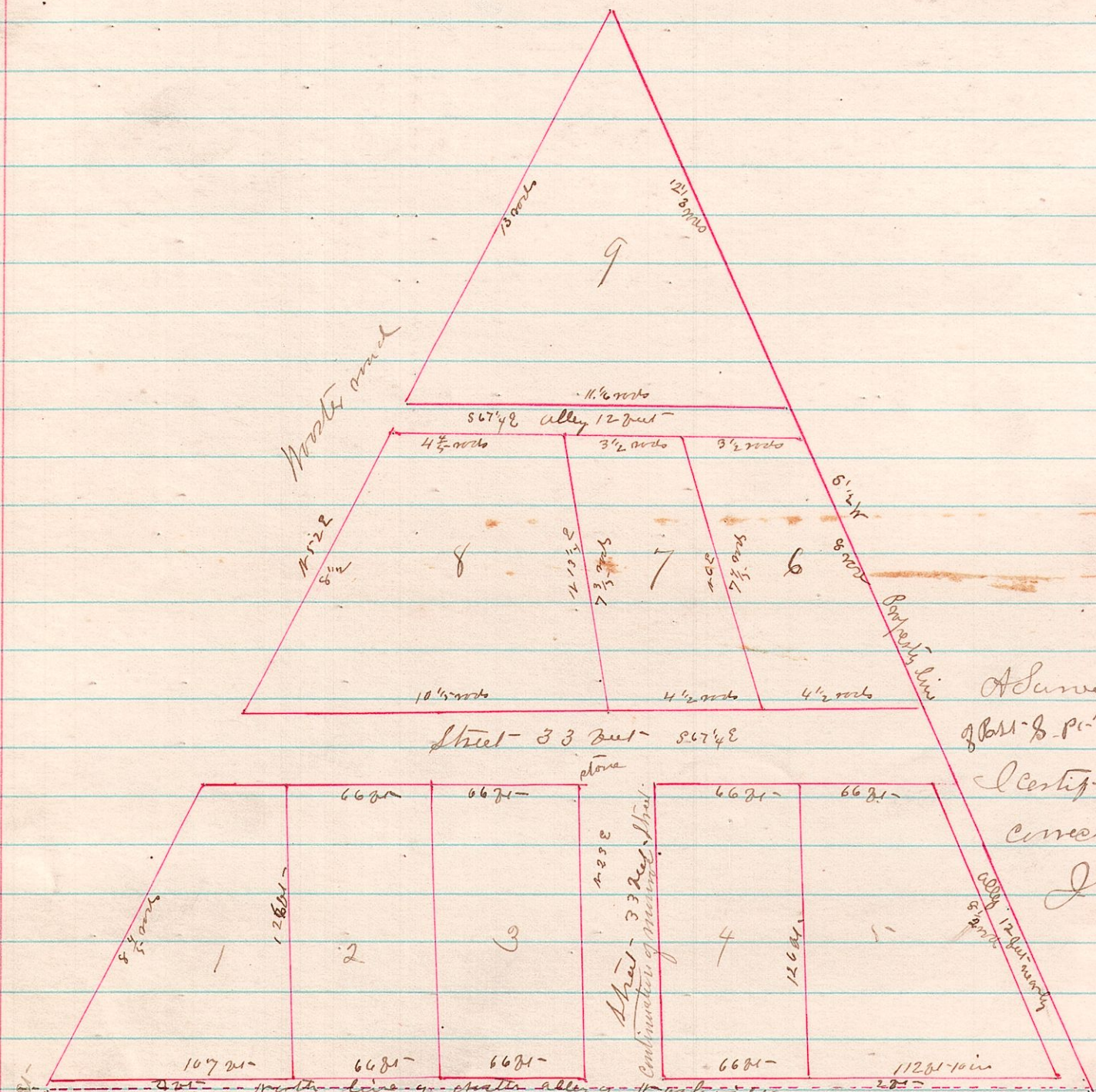


No

290 15 14 13 P- S P- W 1/2 SE 4

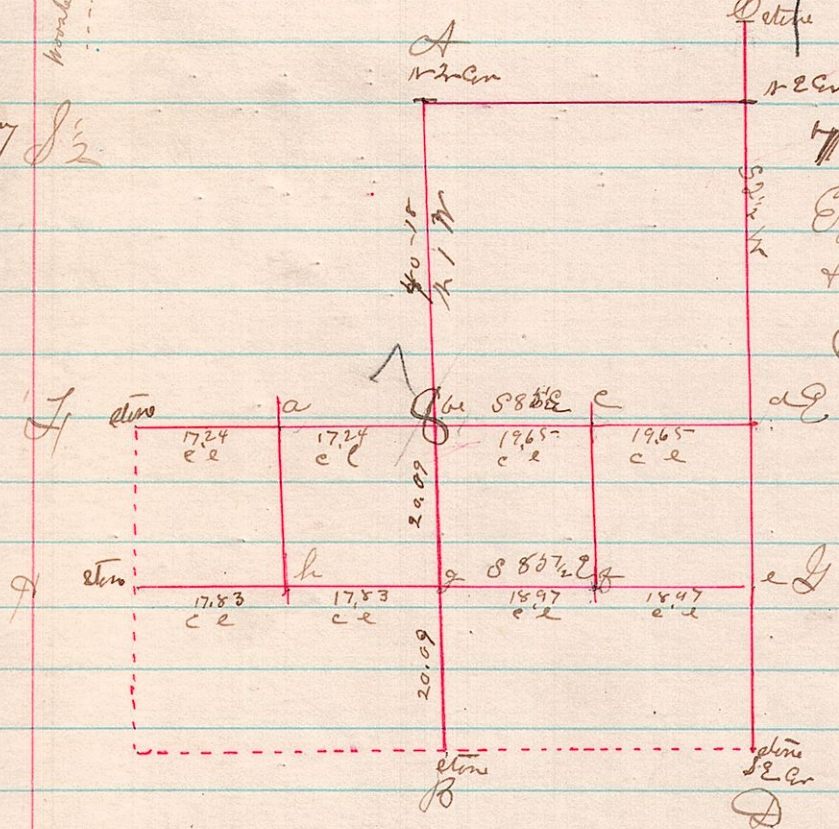


A Survey made for Geo. C. of P- S- P- W 1/2 SE 1/4 Sec 15 19 R 15

I certify this plat to be a correct and true plat  
J. L. Balloum  
County Surveyor

No

291 8 8 7 1/2



A Survey made for Daniel Jones Et al on the 17th & 13 days of April 1888 - I run lines A-B-C-D-E-F-G-H Establishing corners at a-b-c-d-e-f-g-h the stone planted at all corners Corner at e was set by agreement Wm. Brown & Co. Brown & Co. acted as chairman and were duly sworn

James L. Balloum  
County Surveyor