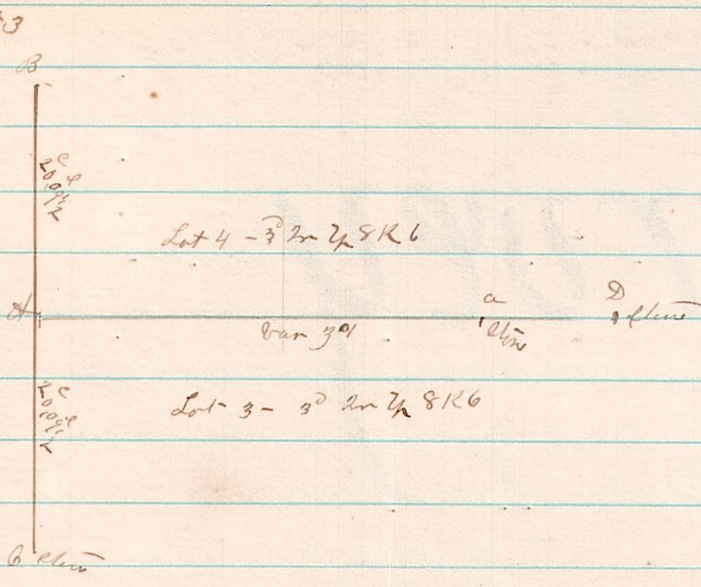
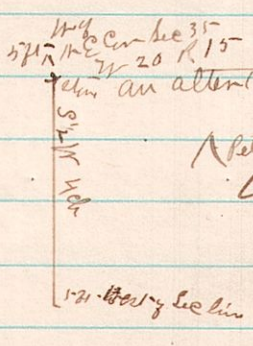


do
286 6 8 24x3
32



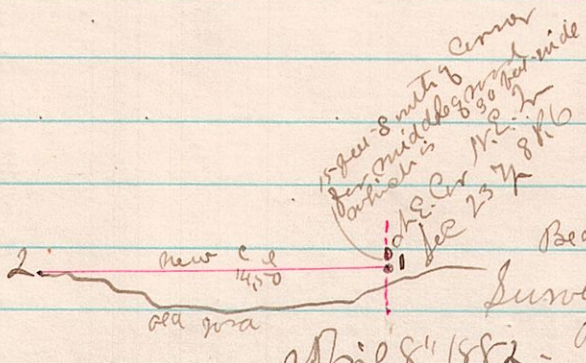
A Survey made for John Patterson Sr & a Jm Board
to determine the corner at A. Line D was run on line of D & A
two points where stones were found and supposed to have been properly
and legally placed then the measurements were made from B to C and
Equally divided thus locating the corner at A - B is the C.M.
Cor Lot 4 and to A.M. Cor Lot 3
Surveyed March 24th 1882 James C. Calhoun
County Surveyor

do
287 15 20 35 N.E.
TR 370



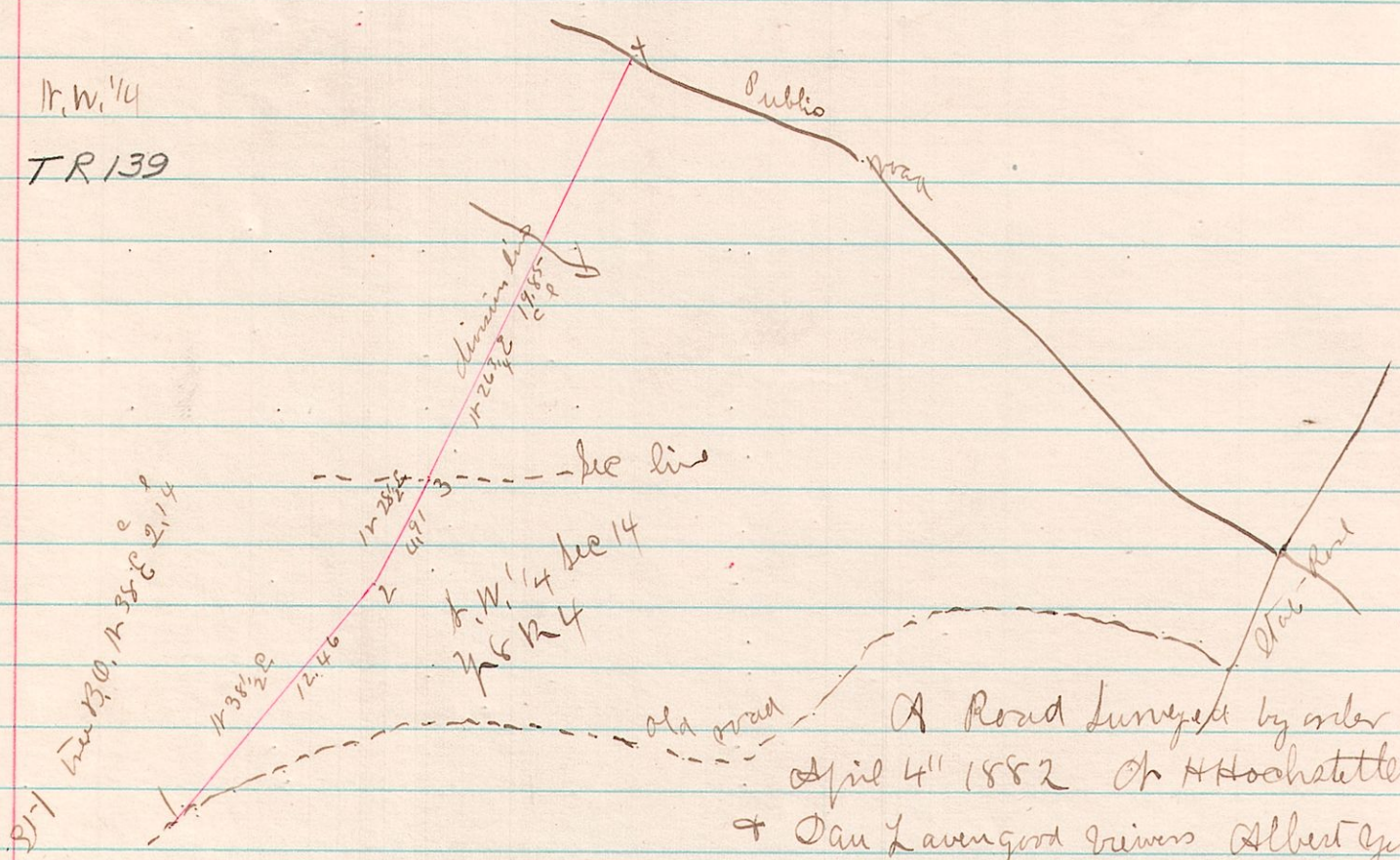
A Road Surveyed by order of the county commissioners March 28th 1882
Chainmen J.A. Luchow & W.R. Harris
Viewers Samuel Bowen Godfrey Spreng and Wm McFarland
James C. Calhoun County Surveyor

do
288 6 8 23 N.E. Cor
CR 59



Survey the above alteration by order of the commissioners
April 8th 1882 - J. Finney - Joseph Hindley & J. Steel viewers
The later selected to fill the vacancy J.D. Maxwell who through a
misunderstanding failed to come - some men acted as Chainmen
markers
James C. Calhoun
County Surveyor

do
289 4 8 14 N.W. 1/4
TR 139



A Road Surveyed by order of commissioners
April 4th 1882 Ch. H. Hochstetler Samuel Helmuth
& Dan Lavengood viewers Albert Guder & John Busby
Chainmen S.D. Hershberger markers
James C. Calhoun
County Surveyor