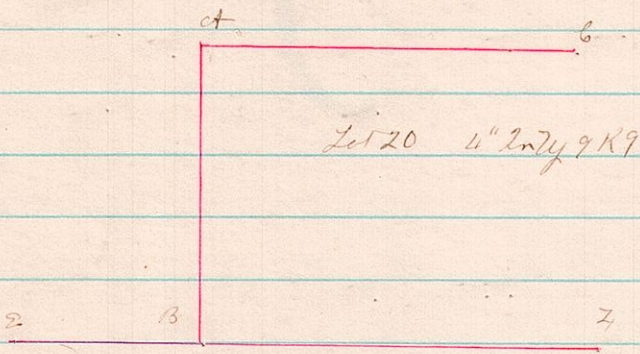


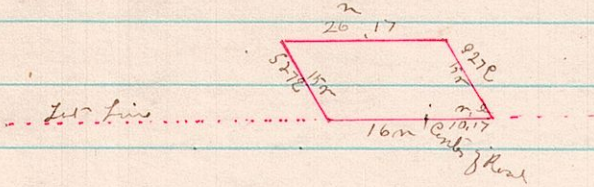
No 281 9 9 20



The following are the names of the witnesses  
Walter Harker, Martha Fisher, Lewis Packer, James B. Ballhoun

A Survey made for Adam Schmidt et al on the 14<sup>th</sup> day of February 1882 legal notices being given competitors persons were chosen as claimants & duly sworn  
Line E-F-B-C + A-B were run corners established at A + B  
Mature tree still standing for corner B + Hickory for A + Chestnut cut down but stem standing James B. Ballhoun  
County Surveyor

No 282 9 9 21 81



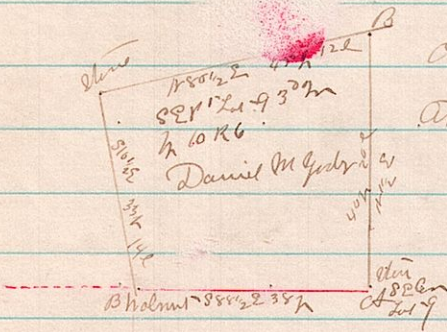
A Survey made for Martha Fisher Feb 14<sup>th</sup> 1882

James B. Ballhoun  
County Surveyor

No 283 7 9 21 81

A Survey made for F. B. Smith of the north-East and South lines of Lot 118 in the original town of Millersburg & said lines were surveyed from the corner at Court house South West - cor of Lutheran church lot and north West - corner Lot 113  
Surveyed February 16<sup>th</sup> 1882  
James B. Ballhoun  
County Surveyor

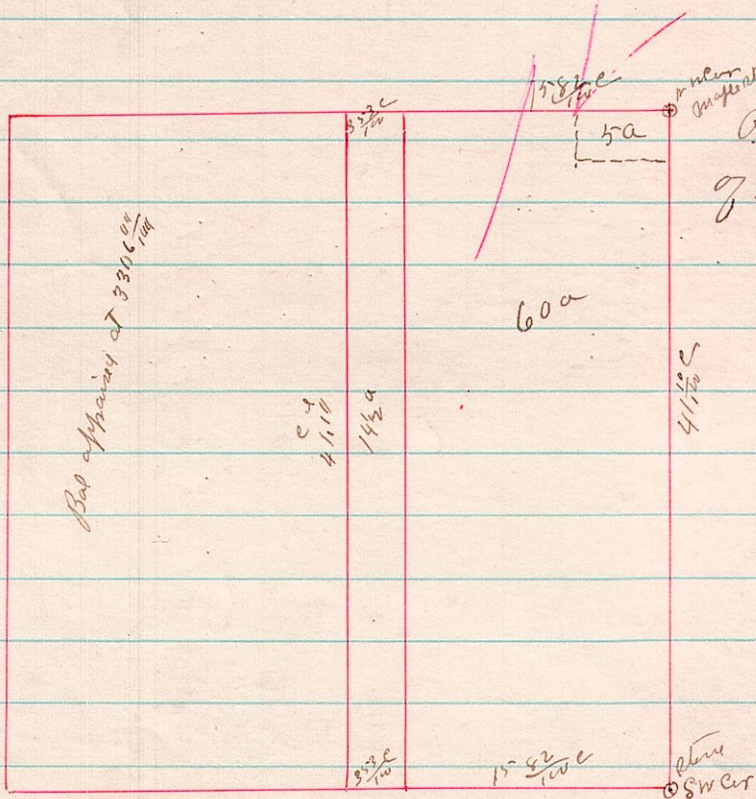
No 284 6 11 9



A survey made for Daniel Fisher from his dad to establish the corner at A-F-B which was done on the 15<sup>th</sup> day of March 1882

James B. Ballhoun

No 285 7 9 5



A Survey made by order of court of Lot 3<sup>rd</sup> 2<sup>nd</sup> July 1847  
Surveyed March 20<sup>th</sup> 1882  
James B. Ballhoun  
County Surveyor