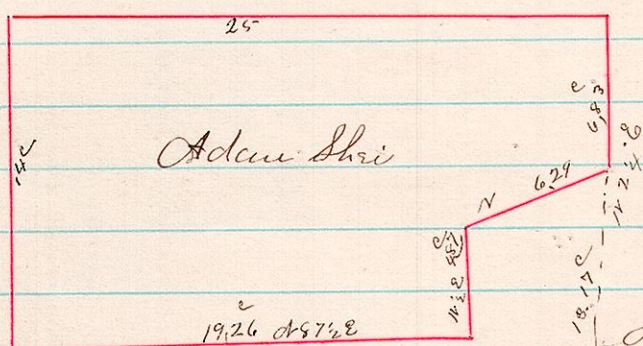
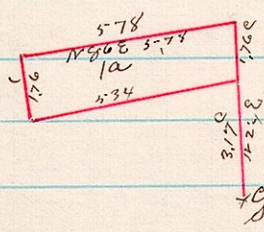


255 4 9 25 S.E. 1/4



A Survey made of Pt. of S.E. 1/4 Sec 25-7, 9 R. 4 for Adam Shri
 on March 12 1883
 James B. Calhoun County Surveyor

256 4 9 25 S.E. 1/4



A Survey made of a school lot in the South East part of S.E. 1/4 Sec 25-
 in Township 9 Range 4 for Henry Milton on the 12th day of March 1883
 James B. Calhoun County Surveyor