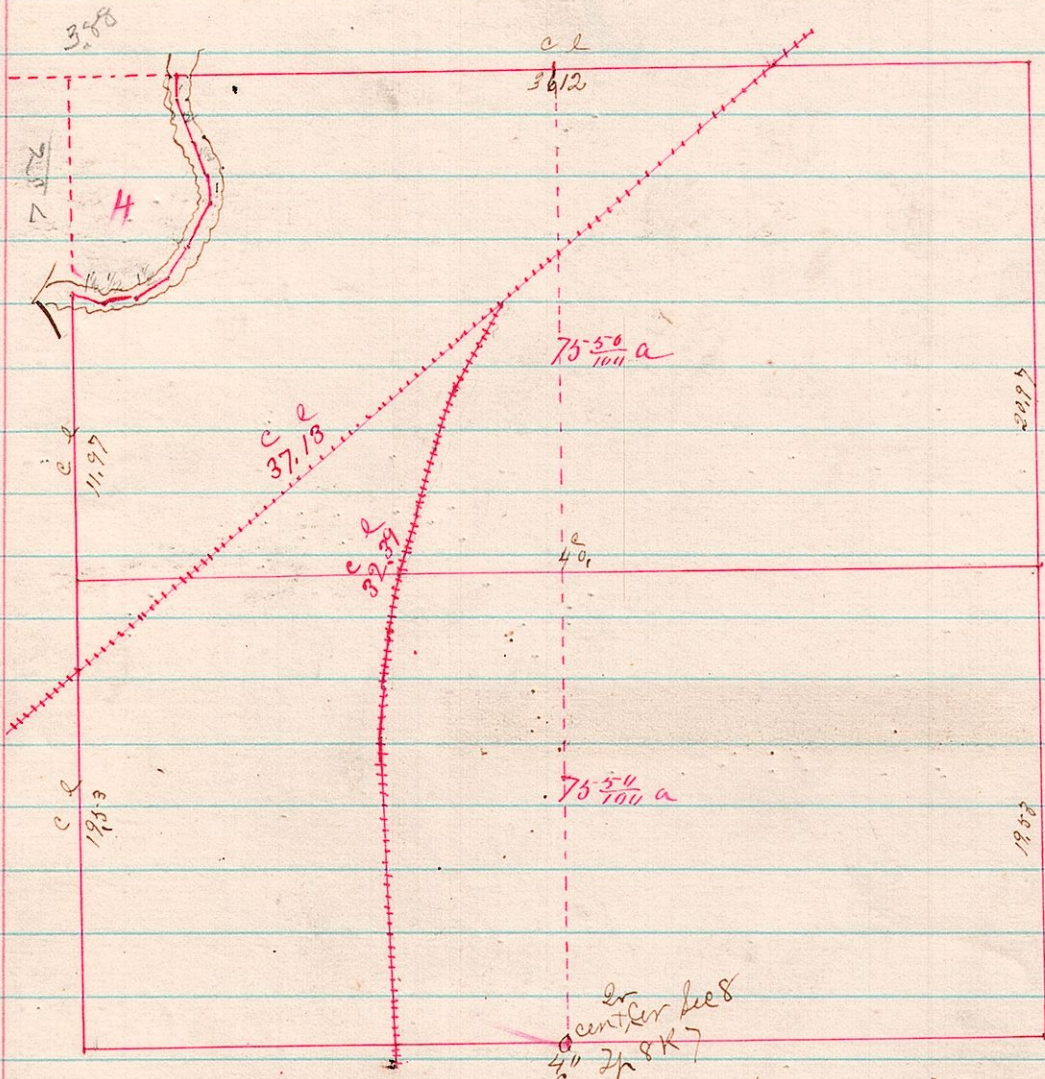


248

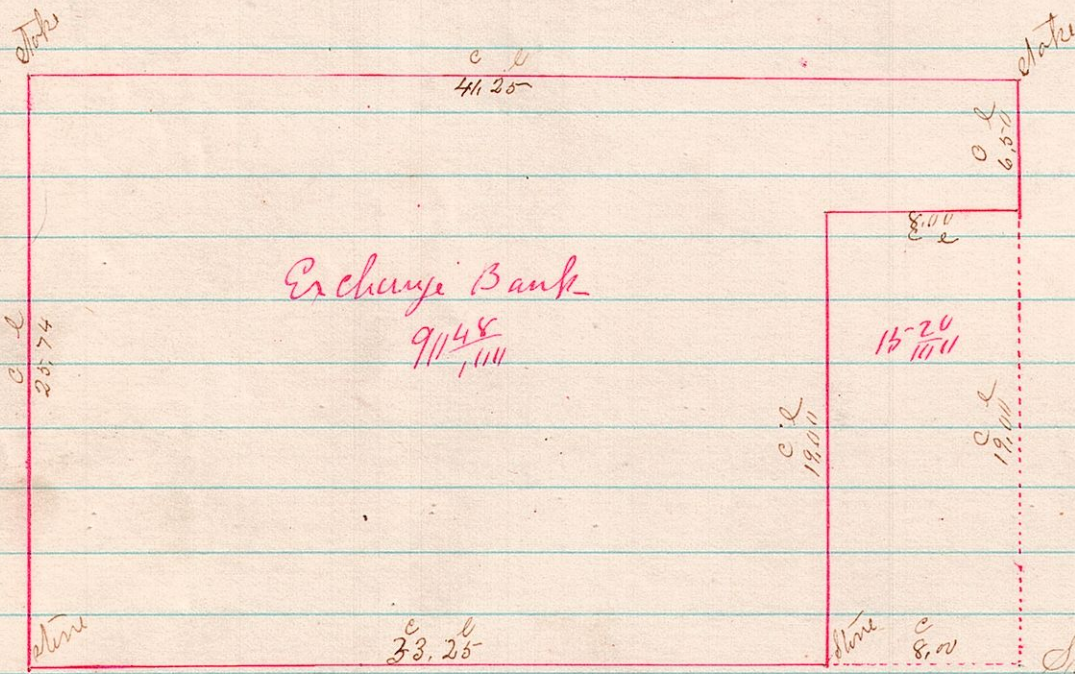
7 8 8  $\frac{1}{2}$  MXP<sup>1</sup>  $\frac{1}{2}$



Divided the above for L Mayer Et al December 17<sup>th</sup> 1880  
 J. B. Ballou  
 County Surveyor

249

5 9  $\frac{1}{2}$   $\frac{1}{2}$



Surveyed for Exchange Bank 11/17/80  
 J. B. Ballou  
 CoS