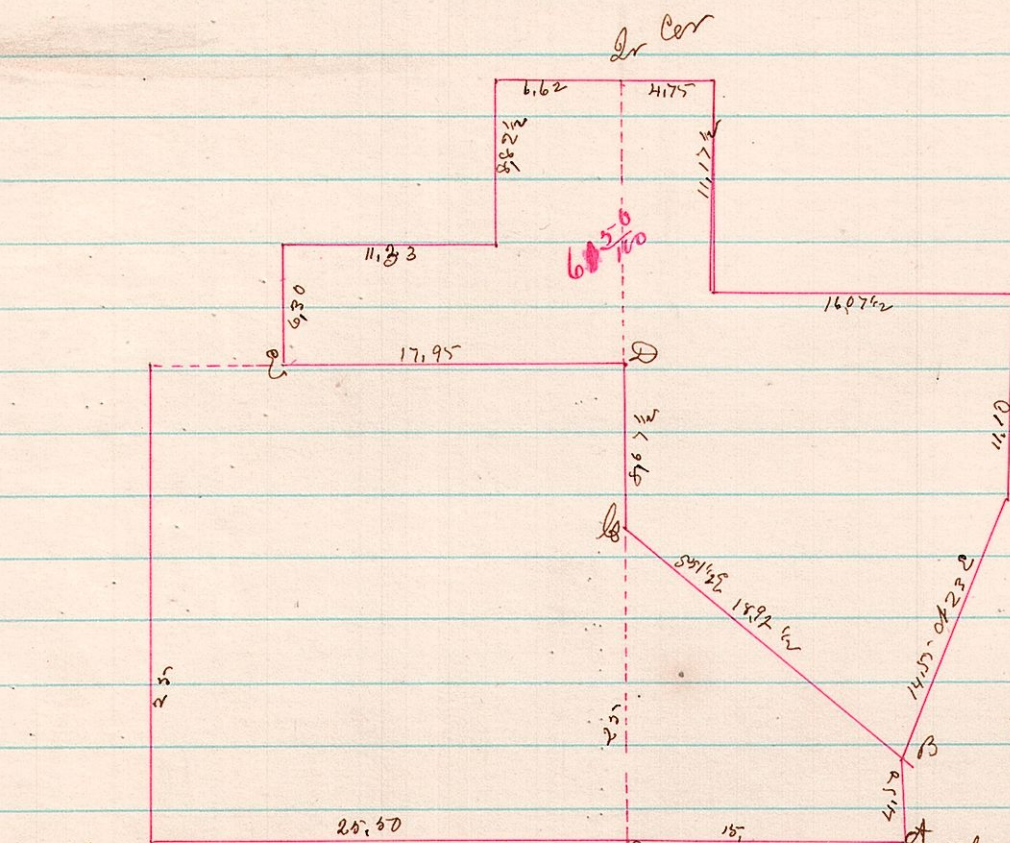


A Survey made for Frank Weaver north Pt of Sect 25 T<sub>15</sub> R<sub>11</sub>



var between 1/4 & 1/2 to right

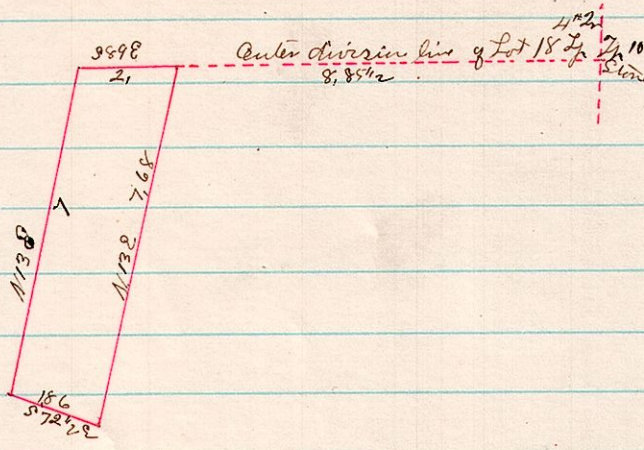
the Corners B, C, D & E were established

the above are the figures as taken from this deed For Standard measure add 3/4 inch to each Survey of 1/26 & 27 1879

The Line A-B overlaps another claim title.

J. B. Allom  
County Surveyor

6 10 1/2 18



Center division line of Lot 18 T<sub>15</sub> R<sub>6</sub>

A Survey made for John Ewing Surveyed 8/8 1879

J. B. Allom County Surveyor