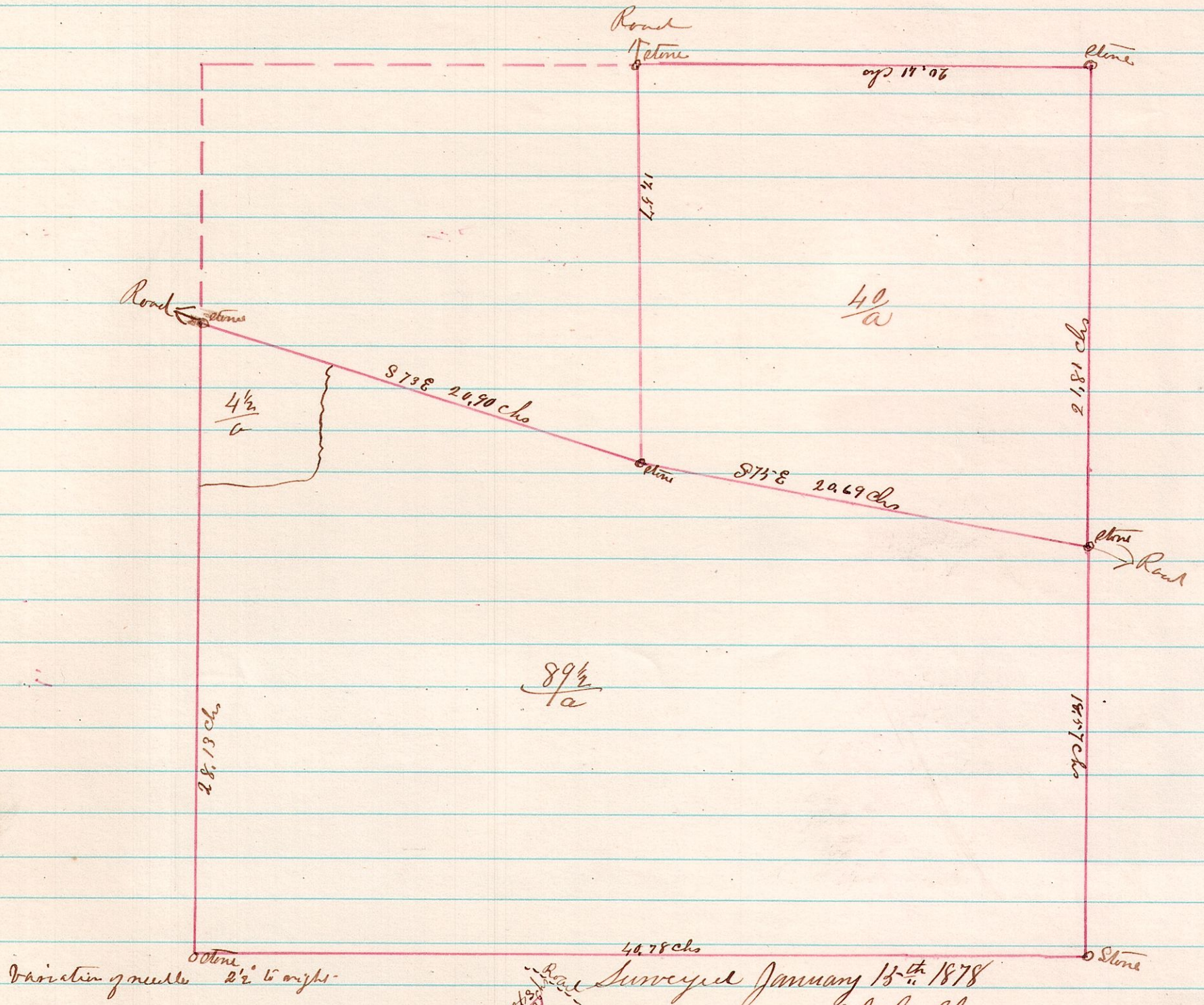


to 9 4th 19 A Survey made for David Stutzman and Isaac Borntrager of a part laying south of the public road and also a piece laying in the North East-corner of the North West Section 19 in 4th Rn 7th of Tp 9 in Range 5-



Variation of needle 2 1/2 to right

Surveyed January 13th 1878
J. G. Calhoun
County Surveyor

15 19 1870

Appraisal at \$6189.80



A Survey made in the partition case of Gallego Guardian of Geo. E. Brittenbuecher against Mary Angstadt of the part remaining of the West half of the North East of section 13 also a small piece laying in the S.E. Corner of the west half of the S.W. Quarter of Section 10 both being Township 19 of Range 15. Chain carriers Isaac W. Vance & Jacob Spirany marker Paul W. Drake
Surveyed Jan 21st 1878
J. G. Calhoun
County Surveyor

N 3/4 W 38.62 chs

73 52 / a

S 1/2 E 39.09 chs

op 1/4 M 1/2 chs