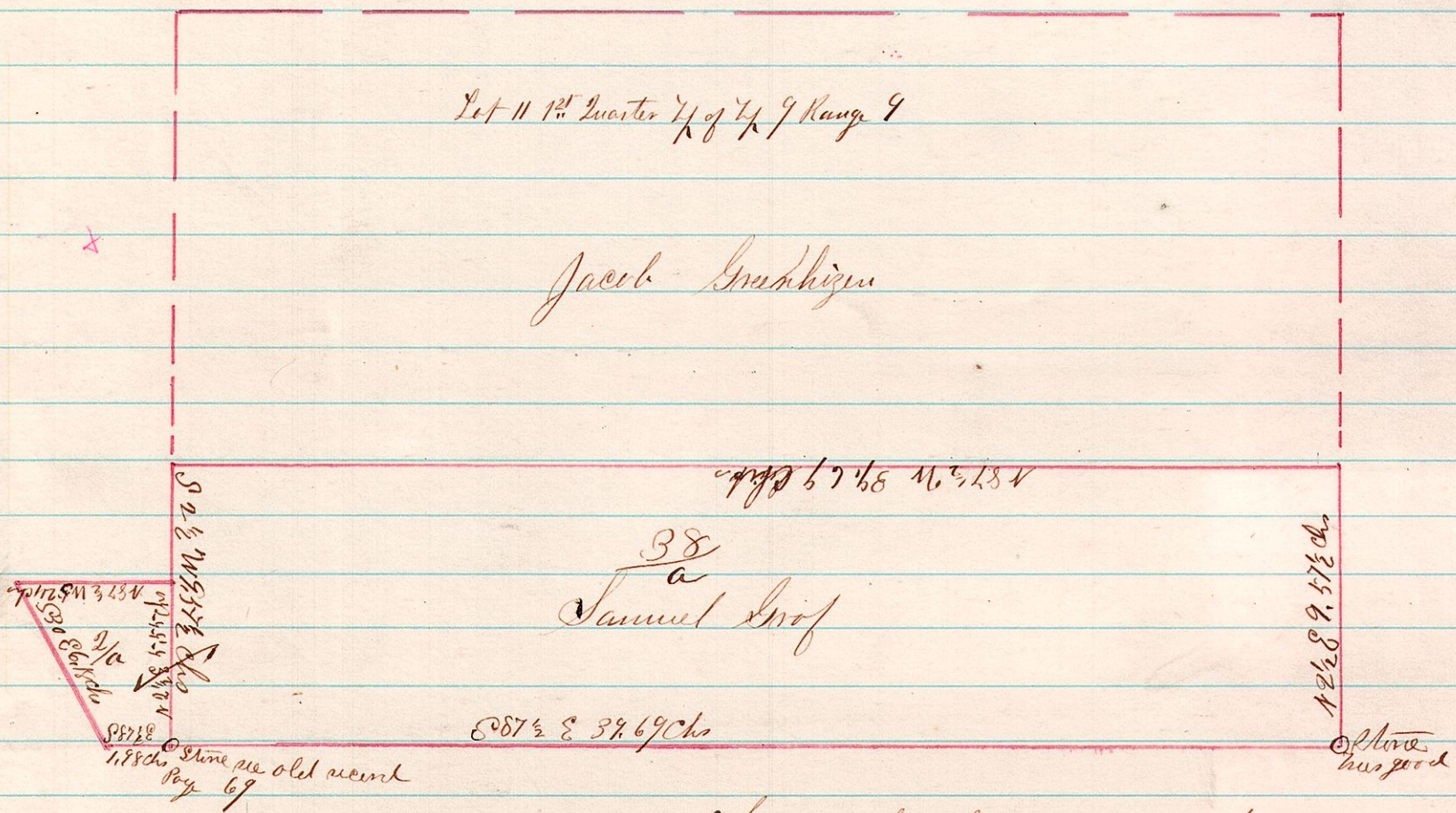


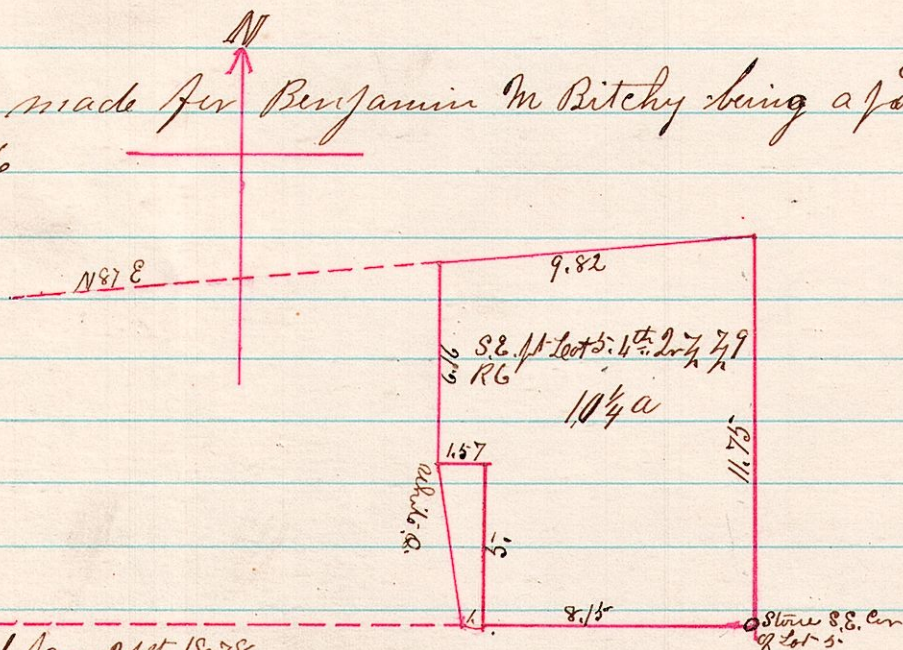
99 1st 2nd Lot 11

A Survey made for Jacob Spenhizer and Samuel Grief for the purpose of cutting 38 acres off of Lot 11 and running the lines of a two acre piece in the South East corner of Lot 13 See old record page 69.



Survey the above January 3rd 1878
J. C. Sealhorn
County Surveyor

69 1st 2nd A Survey made for Benjamin M Bitchy being a part^{out} of the S.E. part of Lot 5:4th 2nd 1/4 1/4 of Range 6



Surveyed Jan 21st 1878