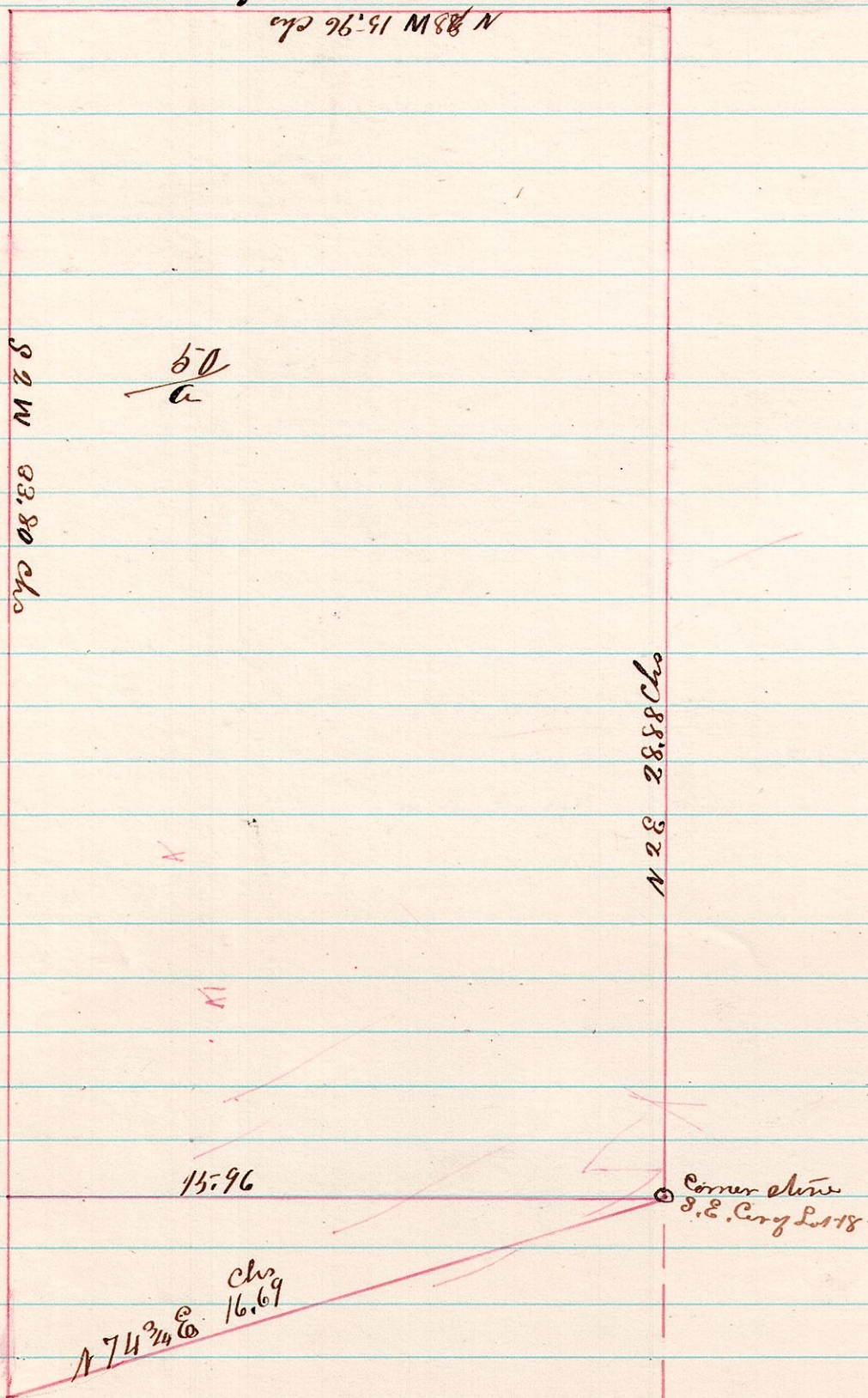
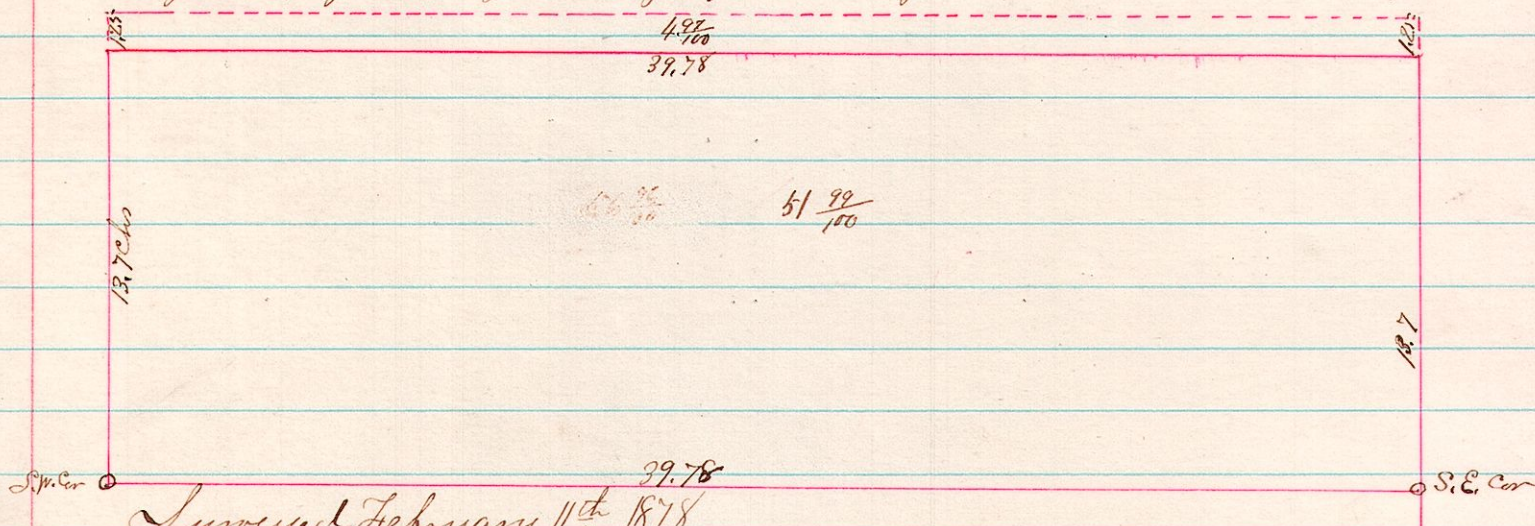


6 9 33 A Survey made for J. V. Sharp and H. M. Gullish of a portion of Lots 18 & 23 in the 4<sup>th</sup> quarter Township of Range 6 both pieces together contain 50 acres of land



Surveyed the above November 7<sup>th</sup> 1877  
J. C. Calhoun  
County Surveyor

9 9 38 A Survey made for J. W. Haulley & E. Glasgow of the South part of Lot 8 & Sec 1. T. 9 of R 9



Surveyed February 11<sup>th</sup> 1878  
J. C. Calhoun  
County Surveyor