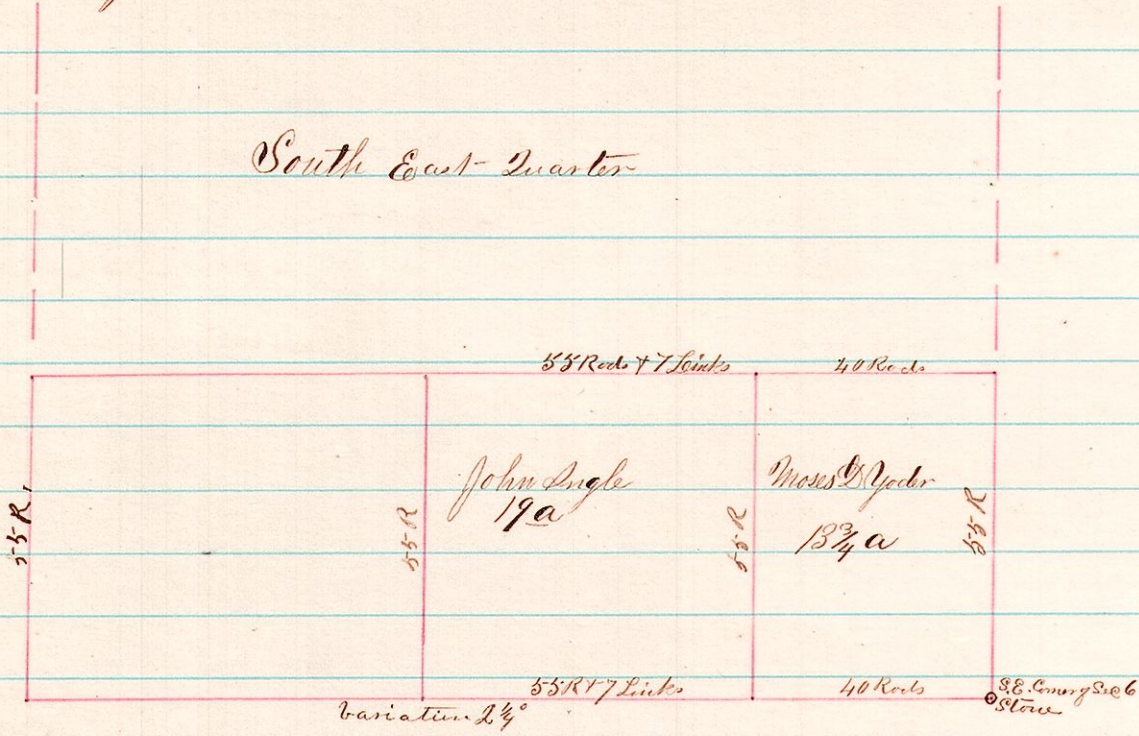


596. A Survey made for Hugh McCallum of a part of the South East Quarter of section 6 in township 9 of Range 5



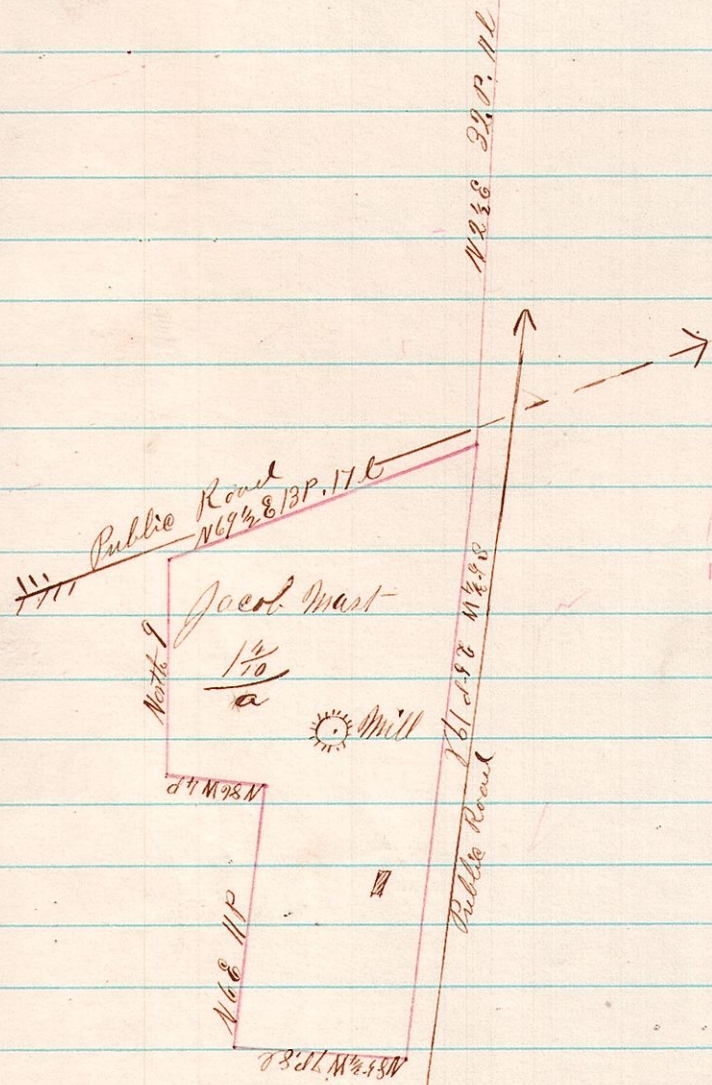
Surveyed September 23rd 1877

J. C. Calhoun
County Surveyor

597. North Section line also Township line

587 1/2 & 460.17 L

N.E. Corner of Section 6 in the 9th Quarter of Range 5



A Survey made for Jacob Mast of the Mill property situated in Section 1 in the 4th Quarter Township 9 of Range 5 as indicated in the above plat
Surveyed Sep 27th 1877
J. C. Calhoun
County Surveyor