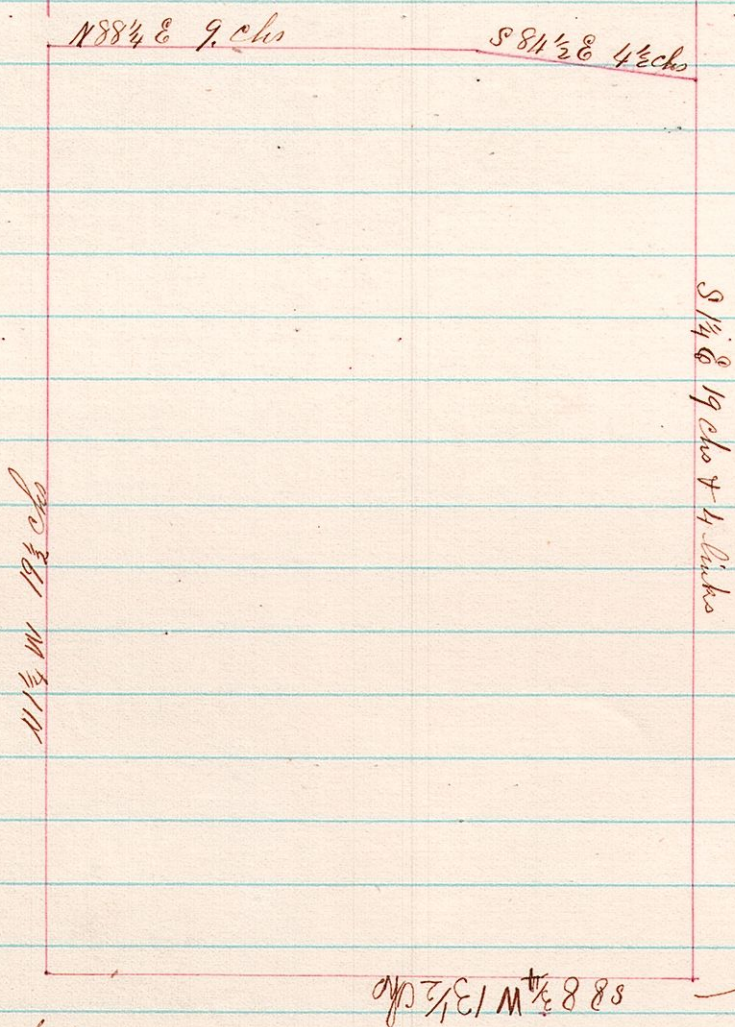


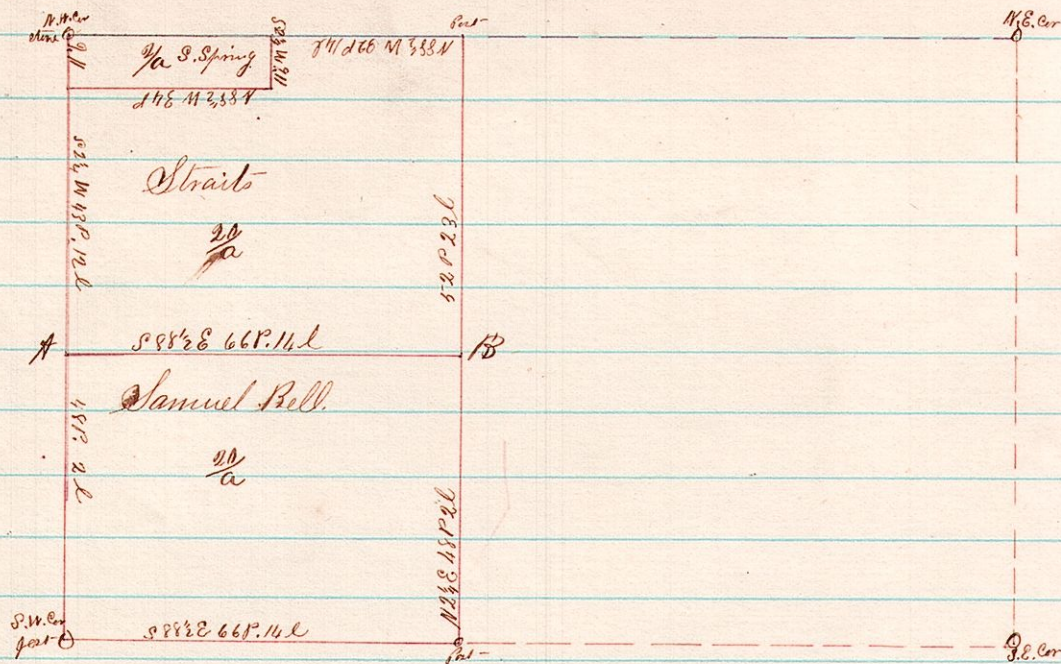
14 17 12 A Survey made for John McIntire and others of the South part of the West part of the South West Quarter Section 12 of Township 17 in Range 14



Surveyed Aug 30th 1877

J. C. Calhoun
County Surveyor

6 8 22.26 A Survey made for Samuel Bell and Straits dividing a part of the West part of Military Lot No. 26 in the 2nd Dr 7 & 8 of R. 6 1



Remarks: The line A B was run ^{measured} 52 p + 23 l South of the North line and parallel with it thus making 22 a in the North piece including Spring 2 aers and land 20 a in each of the pieces The rest of the figure are taken from the notes of a survey made by Samuel Robinson May 12th 1873

Surveyed Sep 7th 1877

J. C. Calhoun
County Surveyor