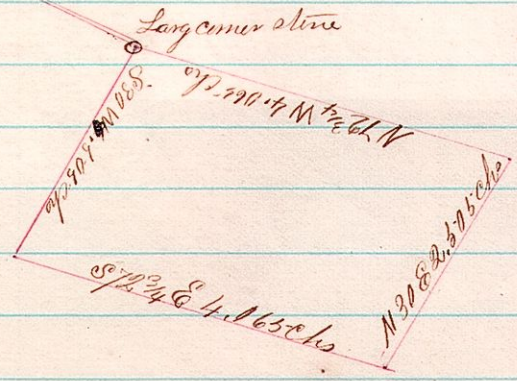
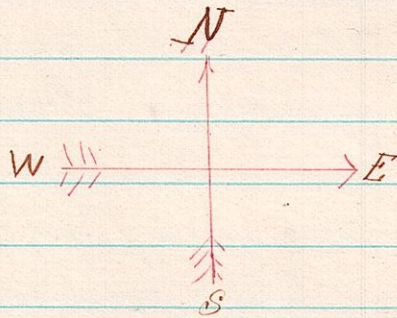


12 14 7 A Survey made for the Board of education of Salt creek township under the instructions of Anthony Woodruff to locate a site for a school house in the South East-Quarter of Section 7 in Township 4 of Range 12. No. 181

S.W. Cor of S.E. 1/4 of Sec 7 T. 4 R. 12

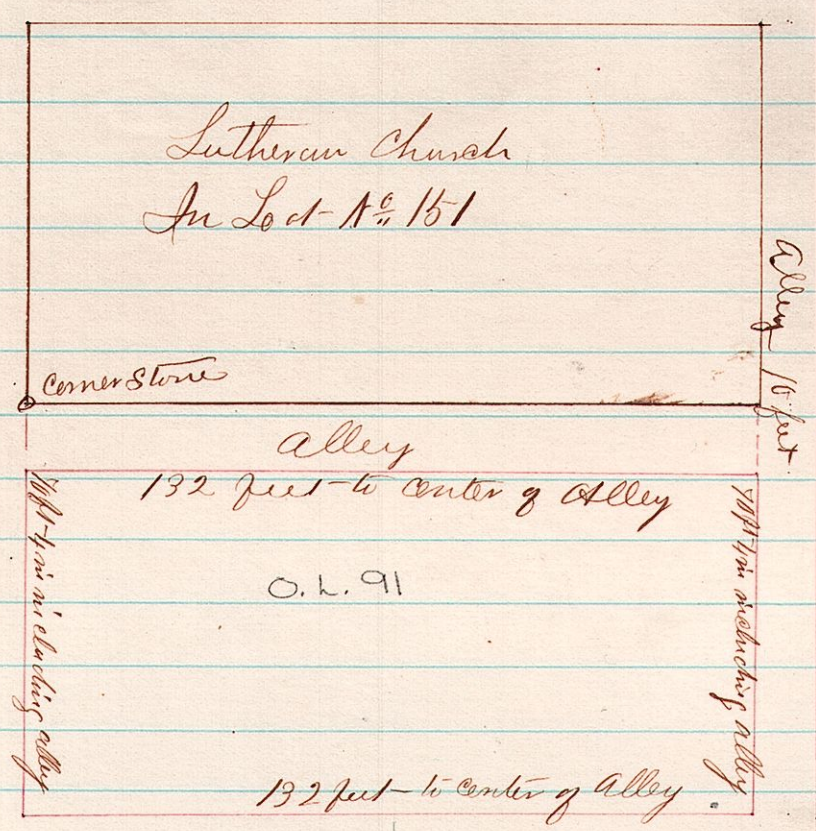


Surveyed the above
May 25th 1877
Resurveyed Aug 27th 1877

J. C. S.

J. C. Calhoun
County Surveyor
No. 182

7 9 12



A Survey made for Andrew Angles of the first lot or space lying South of No. Lot No. 151 and between it and the Street running East & West - Surveyed Aug 28th A.D. 1877

J. C. Calhoun
County Surveyor