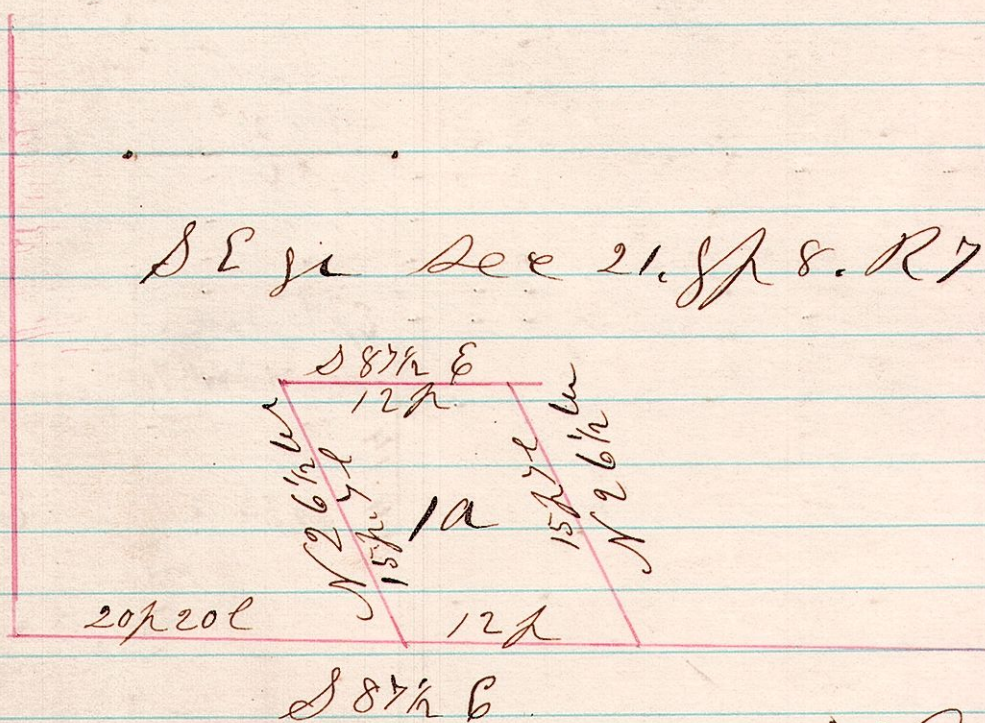


7821 A Survey made for Edward Carpenter, being part of the south part of the south east quarter of Section 21. T8. R17.

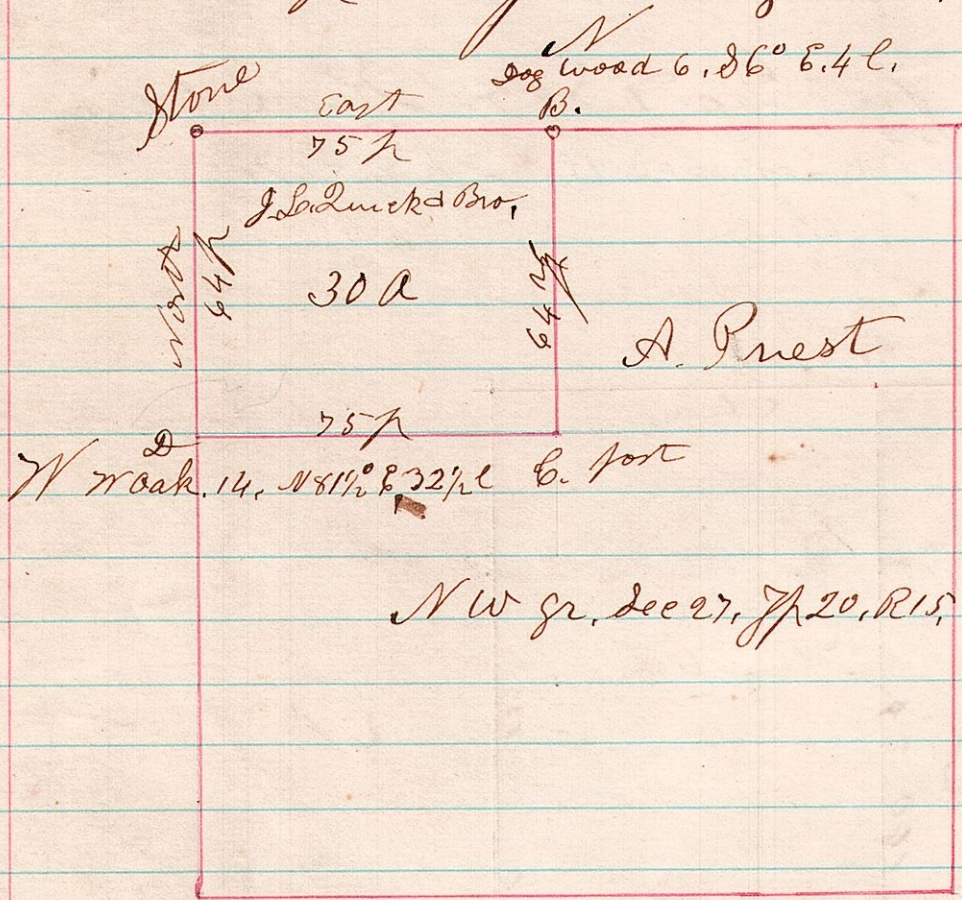


May 19<sup>th</sup> 1876

H. H. Robinson  
Co Surveyor

27  
152017

A Survey made for J. S. Louck & Bro. & George Priest, being 30 acres in the north west corner of the north west quarter of Section 27, in Township 20. of range 15,



May 26<sup>th</sup> 1876

H. H. Robinson  
Co Surveyor