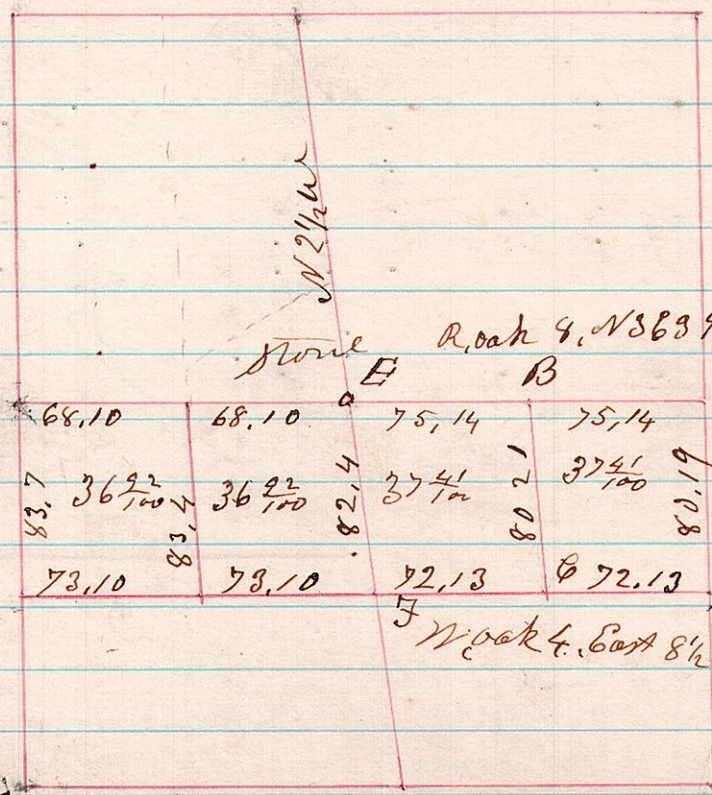


18819 A Survey made for A. Brink & others. 150  
 being the north half of the south half of sec 19,  
 T8. R8.

W. oak 20. N 1 1/2° E 14 l.  
 " " 20. N 65° E 13 l.  
 A

sec 19.



E. Established corner by running across section both ways from quarter corners & planted Stone,

C. Hickory 4. S 13 W 4 l.

A. Stone, Established from original witness trees according to the sworn statements taken by me of Elias Harford, Horatio Purdy, Henry McCloudagh & Chester Purdy, who this day swore they saw the original witness trees while standing, & they pointed out the Courses where they originally stood which Course & distance agreed with the original field notes of this corner. From the above I am satisfied that the Stone at the quarter post on the north line of said Section 19, is where the Corner originally stood, & took new witness trees as follows,

White oak 20. N 1 1/2° E 14 l.  
 " " 20. N 65° E 13 l.

May 9<sup>th</sup> 1876

H. H. Robinson  
 Co Surveyor