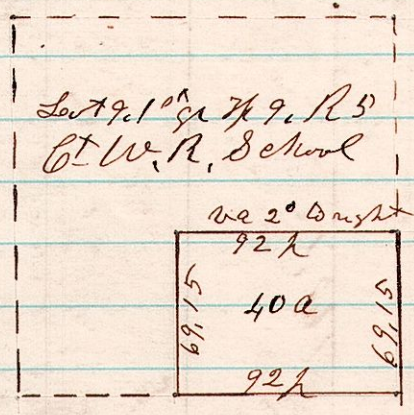


No 126

59^{cor} A Survey made for Samuel W Weaver being the South East part of Lot 9, 1st gr. Tp 9. R 56th W. R. 8. S. 2.

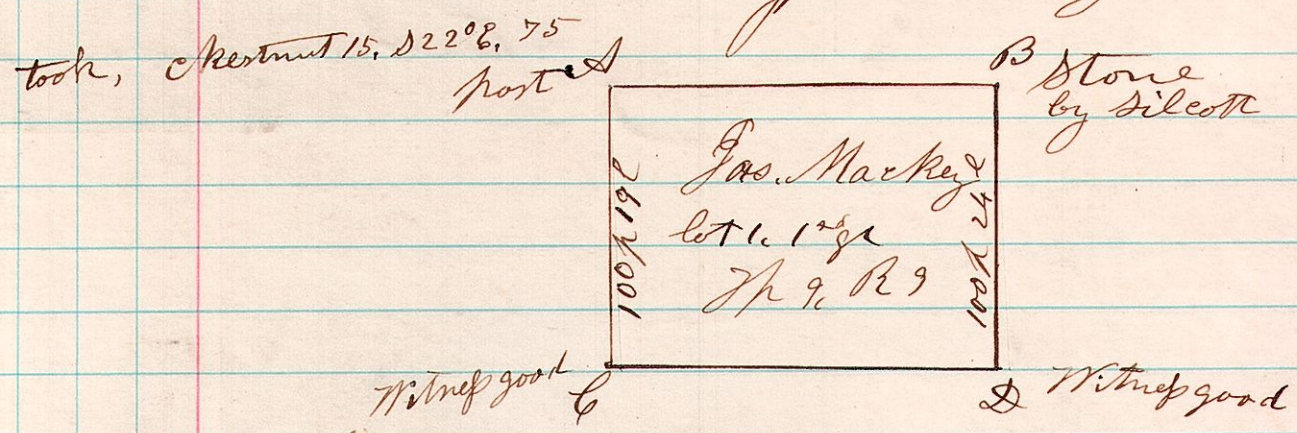


January 19th 1876

H. H. Robinson
Co Surveyor

127

99^{1st} A Survey made for James Mackey being the Establishing Corners at A. C. D. of military lot No. 1, 1st gr. Tp 9. R 9.

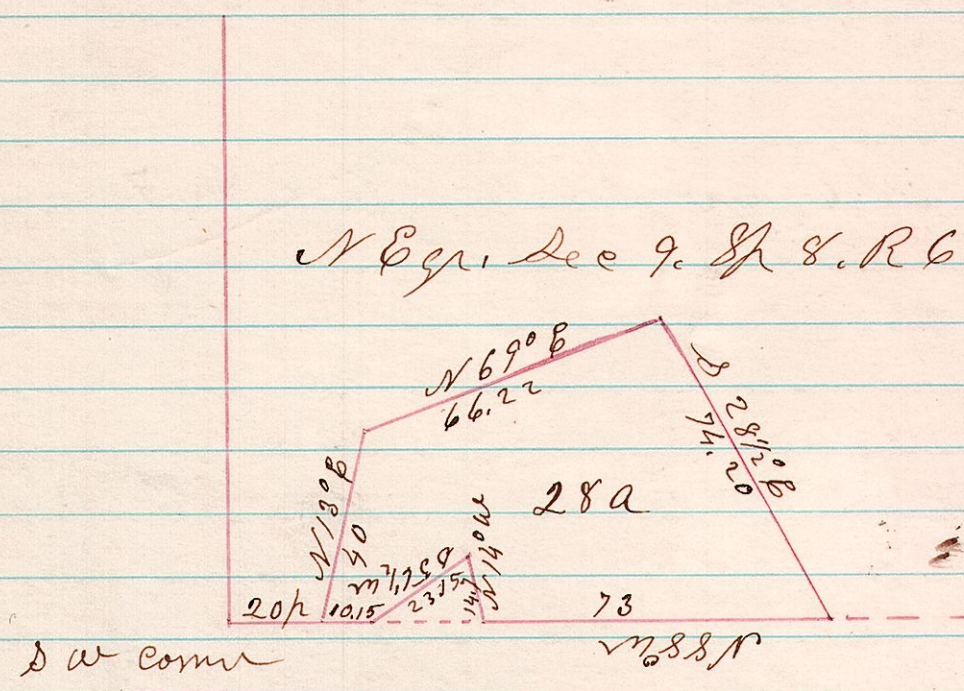


Feb 14th 1876

H. H. Robinson
Co Surveyor

128

689 A Survey made for William Harshberger, being part of the NE 1/4 of Sec 9, Tp 8. R 6. East 1/2



Feb 15th 1876

H. H. Robinson
Co Surveyor