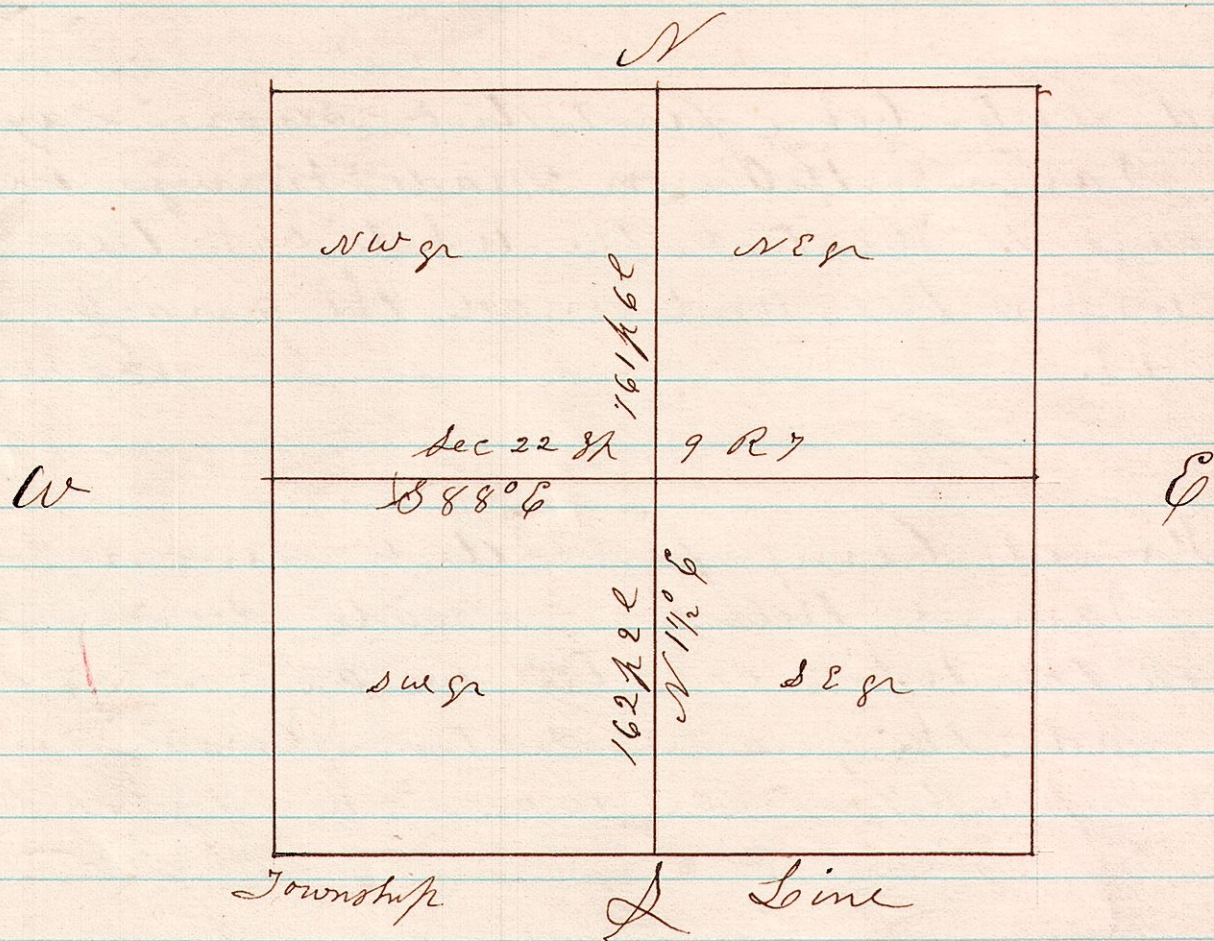


Ismael Devore being first duly sworn, says
 I was present when Joseph Edgar Co surveyor made
 surveys for W & S Bower in sec 22, Tp 9, R 7.
 He commenced at quarter post on north line of sec,
 and run south to south line of sec, but could not
 find no corner, nor did he establish one, went back
 to center of sec, & made divide without reference to
 quarter corner on south.
 signed Ismael Devore

I made examination of the white oak tree above
 mentioned, it is the only tree now standing anywhere
 near that point. It had been cut on the side next the
 corner as indicated by the original field notes, when I
 first saw it. By whom I don't know. From the above
 evidence, & from what I saw, I took the above mentioned
 white oak tree as the original witness tree, and established
 the quarter section corner on the south line of sec 22,
 Tp 9, R 7, from it, and planted a stone for the corner.
 I then run a straight line from the quarter corner on
 the north line of the section to the corner established
 by me on the south line of said section, then
 run a straight line from the quarter section
 corner on the east line of the section to the quarter
 section corner on the west line of said section, and
 established the center section corner where those
 two lines intersected. I planted a stone for the corner.



I Certify the above to be correct as surveyed by
 me this 6th day of January 1874
 H. H. Robinson
 County Surveyor