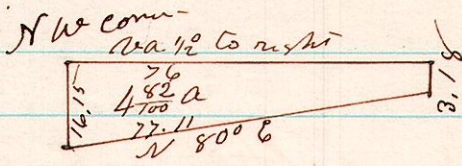


No 123

12 14 8 A survey made for James Snyder, being the NW pt of the S W gr. sec 8. T<sub>14</sub> R<sub>12</sub>.

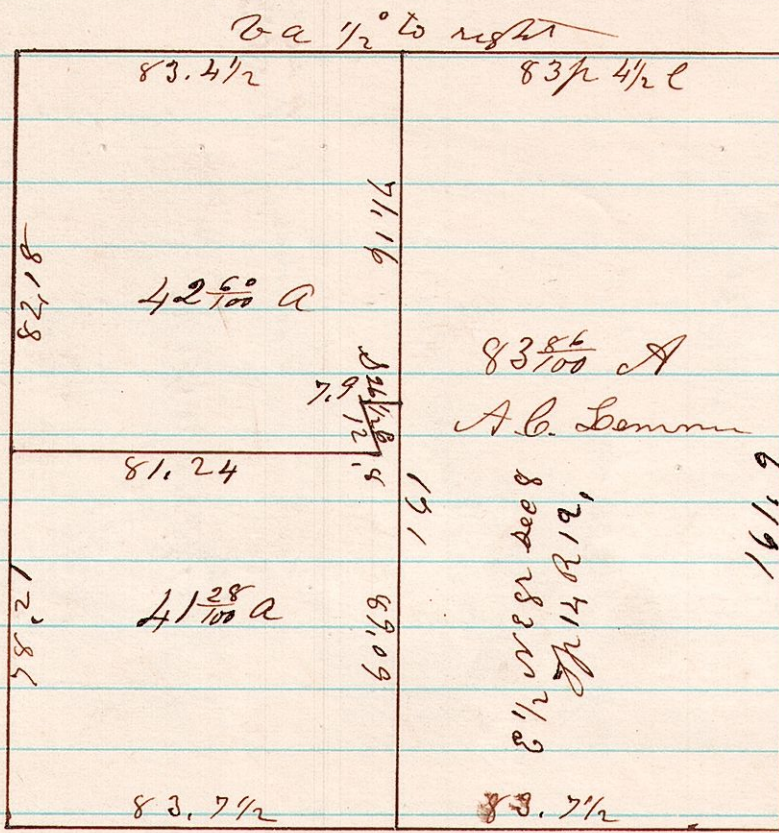


December 30<sup>th</sup> 1875

H. H. Robinson  
Co Surveyor

No 124

12 14 8 A Survey made for A C Lemmon, Alf Snyder & L. Rottman, being the NE gr of sec 8. T<sub>14</sub> R<sub>12</sub>.



December 30<sup>th</sup> 1875

H. H. Robinson  
Co Surveyor