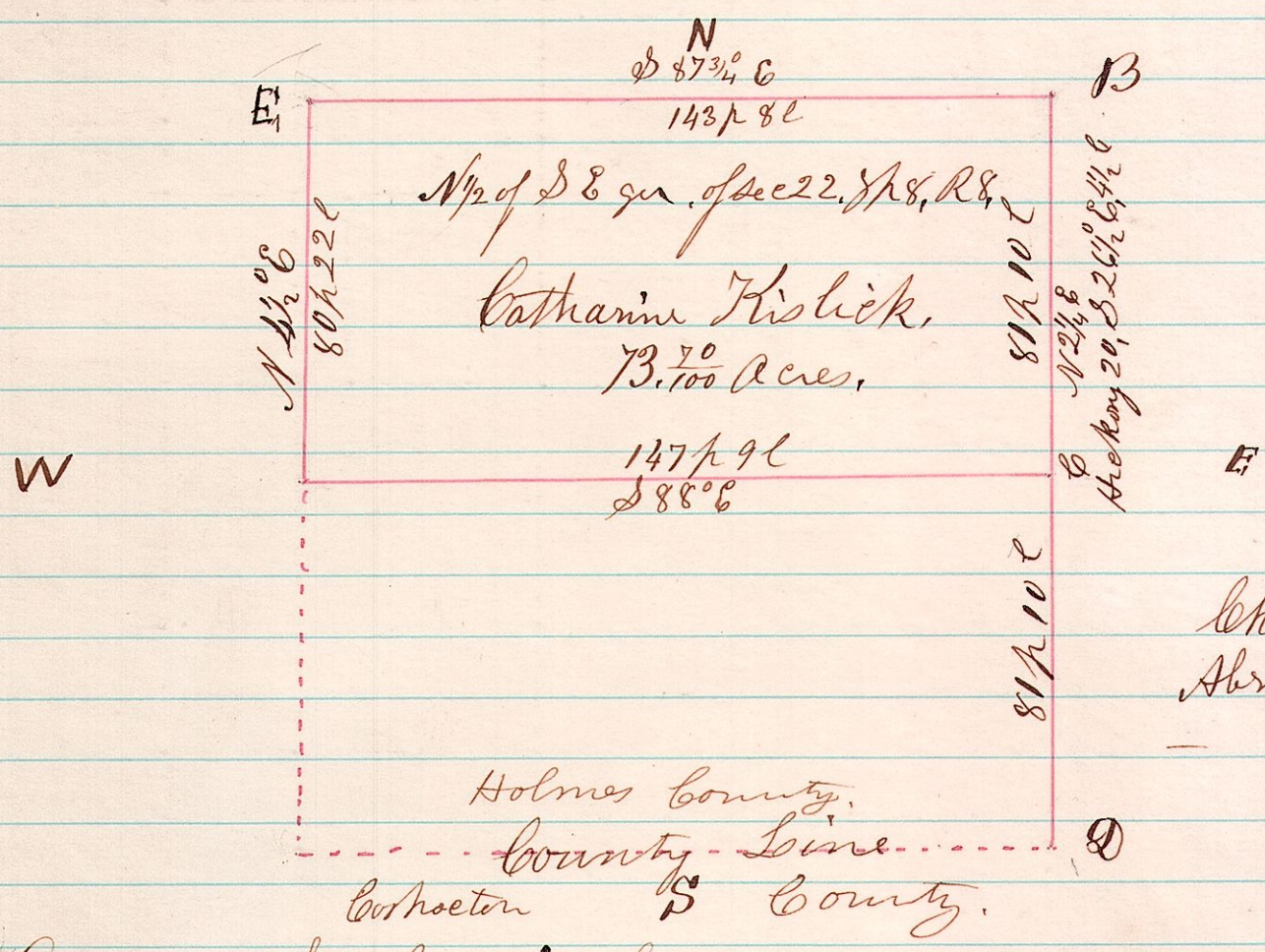


No 105

8822 A Survey made for Catharine Kislick, being the north 1/2 of the S 1/2 of sec 22, T8, R8.



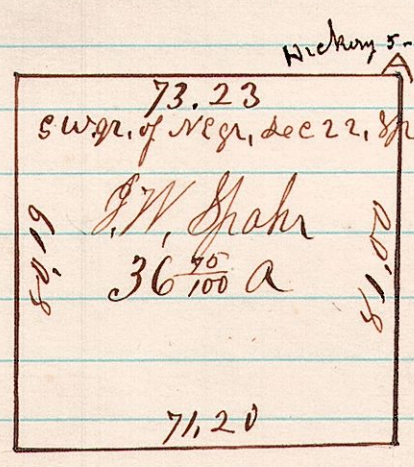
I Certify the above to be a correct plat of the above described tract of land. There was a stone corner at all the corners except at C, I established that corner by running from the S.E. corner of the section at D, to the quarter corner at B, and making C-B & C-D, Equidistant.

September 20<sup>th</sup> 1875

H. H. Robinson  
County Surveyor.

No 106

8822 A measurement made for J W Spahr, being the S 1/2 of the N 1/2 of sec 22, T8, R8.



I didnt run the lines with the Compass, as there was a stone at each corner, & measurement alone was wanted.

September 20<sup>th</sup> 1875,

H. H. Robinson  
Co Surveyor.