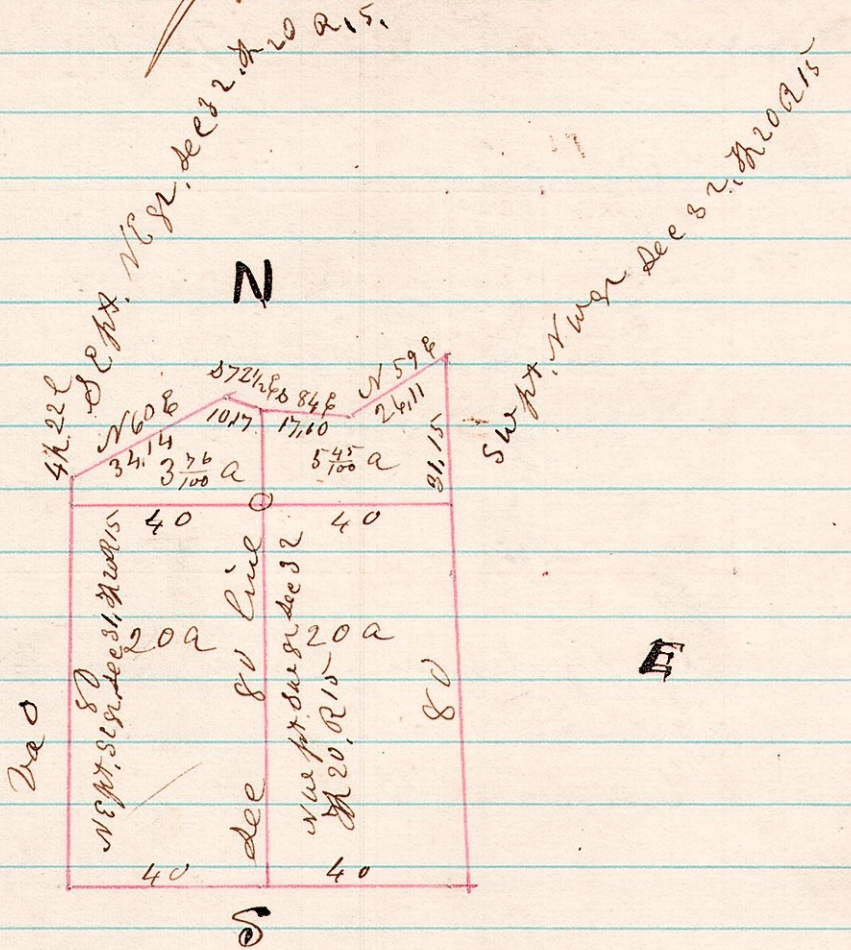


R 5 S 15 20 32 A Survey made for Frederick Kick in Sec 31 R 32  
T 20, R 15

No 70

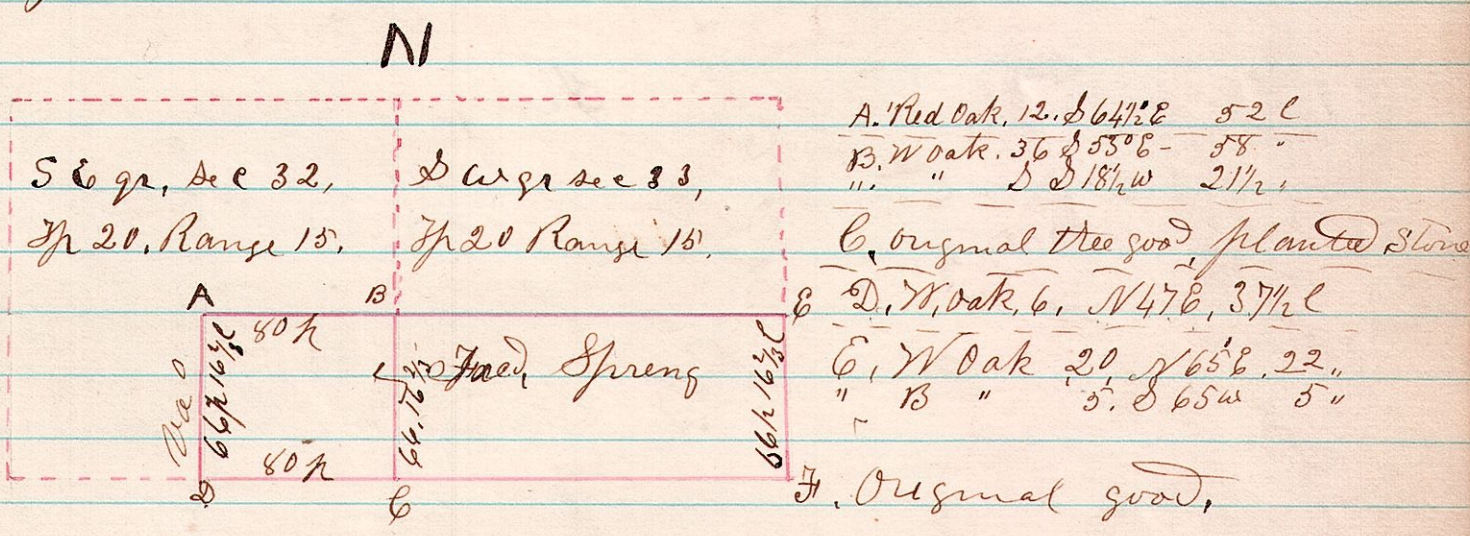


Surveyed the above  
May 13<sup>th</sup> 1875

H. H. Robinson  
C. Surveyor

15 20 32 A Survey made for Fred<sup>r</sup> Spreng, being disputed  
line between him & George Levingood, being part of the  
south east quarter of Sec 32 & the south part of the south  
west quarter of Sec 33 T 20 R 15.

No 71



I Certify the above to be correct, as surveyed from  
Spreng's deed  
May 12<sup>th</sup> 1875.

H. H. Robinson  
C. Surveyor